

目录

Contents

卡盘，回转缸配用参考表

Chuck and Cylinder Matching Refer Table

01

动力卡盘选用表（供参考）

Power chuck selection table (For your reference)

02

动力卡盘

Power chuck

YK1单爪中实液压卡盘
2 jaw through-hole hydraulic 03

YK2二爪中空液压卡盘
2 jaw through-hole hydraulic chuck 04

YS2二爪中实液压卡盘
2 jaw solid hydraulic 05

YK3三爪中空液压卡盘
3 jaw through-hole hydraulic chuck 06

YS3三爪中实液压卡盘
3 jaw solid hydraulic chuck 07

YK3-DK三爪大孔径中空液压卡盘
3-jaw large thru-hole power chuck 08

YK3-D三爪中空大行程液压卡盘
3 jaw hollow large-stroke hydraulic chuck 09

YK3-L三爪立式中空液压卡盘
Vertical through-hole hydraulic chuck 10

YS3-C三爪中实长行程液压卡盘
3 jaw solid long-stroke hydraulic chuck 11

YS3-D三爪超大行程液压卡盘
3 jaw extra-long-stroke hydraulic chuck 12

YS4四爪中实液压卡盘
4 jaw solid hydraulic chuck 13

YK4四爪中空液压卡盘
4 jaw through-hole hydraulic chuck 14

K4L破碎锤卡盘
breaker chucks 15

K4SL四爪双动作动力卡盘
4 jaw double-action power chuck 16

KL立车卡盘
Power chuck for vertical lathe 17

QS2二爪中实气动卡盘（内置式）
2 jaw solid pneumatic chuck (built-in) 18

QS3三爪中实气动卡盘（内置式）
3 jaw solid pneumatic chuck (built-in) 19

QS4四爪中实气动卡盘（内置式）
4 jaw solid pneumatic chuck (built-in) 20

QS5五爪中实气动卡盘（内置式）
5-jaw pneumatic chuck (built-in) 21

QB3三爪半通孔气动卡盘（内置式）
3-jaw semi-through hole pneumatic chuck 22

QK3-L三爪立式中空气动卡盘
Vertical through-hole pneumatic chuck 23

QZ3三爪前置式气动卡盘
Front-load pneumatic chuck 24

3J指形动力卡盘
FINGER POWER CHUCK 25

SGA全自动液压分度卡盘
Fully automatic hydraulic indexing chuck 26

油缸和气缸

Hydraulic cylinder and pneumatic cylinder

RQ中空单活塞回转气缸
The hollow single piston rotary cylinder 27

夹头 Collet chuck

RQ-B中空双活塞回转气缸 The hollow double piston rotary cylinder	28
SQ高速中实单活塞回转气缸 The solid single piston rotary pneumatic cylinder	29
SQ-B高速中实双活塞回转气缸 The solid double piston rotary pneumatic cylinder	30
SH-N中实行程检出回转油缸 Mid-stroke detection rotary cylinder	31
SH-A中实注水型回转油缸 ROTATING HYDRAULIC CYLINDER WITH COOLANT CONNECTION	32
SH-B中实注气型回转油缸 ROTATING HYDRAULIC CYLINDER WITH AIR CONNECTION	33
SH-C中实逆止阀回转油缸 ROTATING HYDRAULIC CYLINDER WITH SAFETY DEVICE	34
SH-CN中实逆止阀行程检出回转油缸 ROTATING HYDRAULIC CYLINDER WITH STROKE CONTROL AND	35
SH高速中实回转油缸 High speed solid rotating oil cylinder hydraulic	36
TK短型中空回转油压缸 Through Hole Short Type Rotating Hydraulic Cylinder	37
TH高速中空回转油缸 Through Hole Rotating Hydraulic Cylinder	38

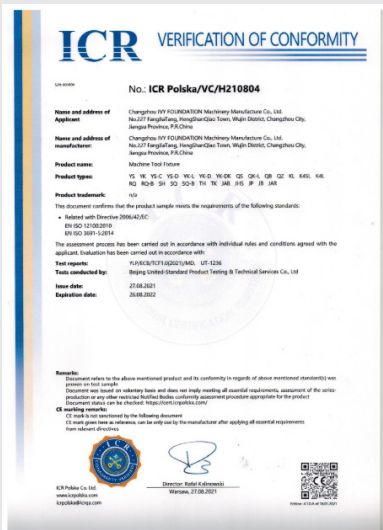
JAB高速回转型气动夹头 High speed rotary type pneumatic chuck	39
JAS立式中空气动夹头 Pneumatic fixing chuck	40
JA超精密膜片夹头 Ultra-precision diaphragm chuck	41
JA空压回转型快速夹头 Pneumatic rotary quick chuck	42
JB后拉式被动夹头 Pull back power collet chuck	43
JH液压回转型快速夹头 Hydraulic rotary type quick chuck	44
JH(A)7-44油压空压精密回转夹头 O. D. Chucking I. D. Expanding collet chuck	46
JHS立式中空液压夹头 Hydraulic fixing chuck	47
JP前推式被动夹头 Push type collet chuck	48
J超精密膜片筒夹 Ultra-precision diaphragm collet	49
C空压油压夹头副爪 Air pressure hydraulic chuck vice claw	50

配件 Accessories

HC软爪 Soft jaw for hydraulic power chuck	51
HJ硬爪 Hard jaw for hydraulic power chuck	52
JSJS-X接水罩与行程控制 Coolant collector with stroke control	53
T型块 T-nuts	54
连接法兰 Flange connecting	55
气压控制器 Pneumatic controller	56

非标定制系列 Non-standard custom series

资质证书 Qualifications



卡盘，回转缸配用参考表

Chuck and Cylinder Matching Rrfer Table

卡盘规格 The specifications of the chuck	适用油缸 Matching the oil cylinder	最大使用压力 Max.pressure Mpa(kgf/cm ²)
YK2-05	TK536	19
YK3-05		29
YK2-06	TK646	18.5
YK3-06		28
YK4-06		21
YK3-06DK		28
YK2-08	TK852	17
YK3-08		27
YK4-08		19
YK3-08DK		26
YK2-10	TK1075	18
YK3-10		27
YK4-10		20
YK3-10DK		27
YK2-12	TK1291	18
YK3-12	TH1291	27
YK4-12	TK1291	20
YK2-15	TK1512	17
YK3-15	TH1512	25
YK4-15	TK1512	19
YK3-18	TH1512	25
YS3-05	SH80	22
YS2-06	SH100	17.3
YS3-06		27
YS3-06C		27
YS3-06D		27
YS2-08	SH125	16.3
YS3-08		25
YS3-08C		25
YS3-08D		25
YS2-10	SH150	19
YS3-10		29
YS3-10C		29
YS3-10D		29
YS2-12	SH200	18.4
YS3-12	SH200	29
YS3-15	SH200	32.5
YS3-18	SH200	32.5
YS3-21	SH200	28
YS3-24	SH200	28
YS3-32	SH250	28

动力卡盘选用表 (供参考)

Power chuck selection table (For your reference)

使用设备	工件类型	夹持部形状	夹持形式	卡盘规格	4	5	6	8	10	12	15	18	页码			
工件旋转型 (车床) Workpiece rotary type (lathe)	轴类 管状类 Shaft-type workpiece pipe-type workpiece	圆形 Circular	插入夹持 Inserted into the clamping	YK3	√	√	√	√	√	√	√	√	05			
			超规格直径工件 Exceed specification diameter workpiece	YK3-D			√	√	√	√	√	√	√	08		
			大口径夹持(油井管道) Large caliber clamping (Oil well pipe)	QZ3	请参看相关页面								22			
			越过工件突起部夹持 Skip the big diameter clamping	YK3-D YS3-D		√	√	√	√	√				08 11		
	(工件穿过卡盘通孔) Insertion of workpiece axis into chuck required	角形 Polygon	两面夹持 Both sides clamping	YK2	√	√	√	√	√	√	√			03		
			四面夹持 Four side clamping	YK4			√	√	√	√	√	√	√	12		
			越过工件突起部夹持 Skip the big diameter clamping	二爪中空大通孔卡盘 Two-jaw hollow large through-hole chuck 二爪中实大通孔卡盘 Two-jaw medium-sized through-hole chuck				√	√	√	√					
	法兰类 盘状类 Plate-type workpiece Flange-type workpiece	圆形 Circular	直接夹持 Direct clamping	YS3	√	√	√	√	√	√	√	√	√	06		
			立式车床 Vertical lathe	QK3-L	请参看相关页面								21			
			前置气压缸 with built-in cylinder	QS3			√	√							17	
			易变形工件 Easy deform workpiece	指形卡盘 Finger chuck			√	√	√							
			精加工(气密检测确认) Precision machining (Airtight test confirmation)	斜拉卡盘 Inclined chuck			√	√	√							
				强力后拉卡盘 Pull the chuck back strongly			√	√	√							
		角形 Polygon	两面夹持 Both sides clamping	YS2	√	√	√	√	√	√	√	√	√	√	04	
			四面夹持 Four side clamping	四爪中实液压卡盘 Four-jaw solid hydraulic chuck				√	√	√	√	√	√	√		
				YK4			√	√	√	√	√	√	√	√	12	
			易变形工件 Easy deform workpiece	指形卡盘 Finger chuck			√	√	√							
			精加工(气密检测确认) Precision machining (Airtight test confirmation)	斜拉卡盘 Inclined chuck			√	√	√							
				强力后拉卡盘 Pull the chuck back strongly												
	单面基准(固定爪) single sided standard (fixed jaw)	单爪卡盘 Single jaw chuck			√	√	√									
中心基准(两顶尖) Center the benchmark (The center of the two ends of the shaft)	圆形 Circular	中心补偿夹持 Center compensates clamping	浮动卡盘 Floating chuck				√	√								
刀具旋转型 (铣床、钻床 加工中心) Drill, Milling, Machining center)	法兰类、盘状类 Plate-type workpiece Flange-type workpiece	圆形 Circular	直接夹持 Direct clamping	QK3-L			√	√					21			
	轴类、盘状类 Shaft-type workpiece Flange-type workpiece		插入夹持 Inserted into the clamping	YK3-L		√	√	√	√	√				09		
Cutting tool rotary type (Drill, Milling, Machining center)	<p>注: 1、3KL系列立式夹盘的上部卡盘, 可根据工件形状的不同而更换相应的卡盘, 如更换2K系列卡盘, 可作两面夹持, 更换3KC系列卡盘, 可作越过工件突起部夹持等。</p> <p>2、无页码的产品为非标定制, 如有需求请咨询销售。</p> <p>1、The upper chuck, it can be replaced according to the workpiece, Switch to the "2K" series, Can Both sides clamping, Switch to the "3KC" series, You can skip the big diameter clamping etc.</p> <p>2、Products without page numbers are non-standard customization, if you have any needs, please consult sales.</p>											 <p>Workpiece 工件 Jaw 卡爪 Chuck 卡盘体</p> <p>Skip the big diameter clamping The sample.</p>				

动力卡盘 power chuck

YS1

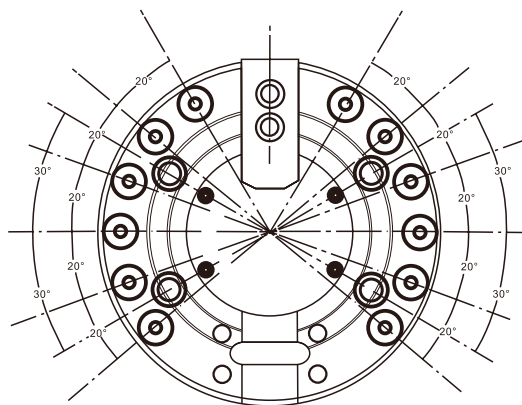
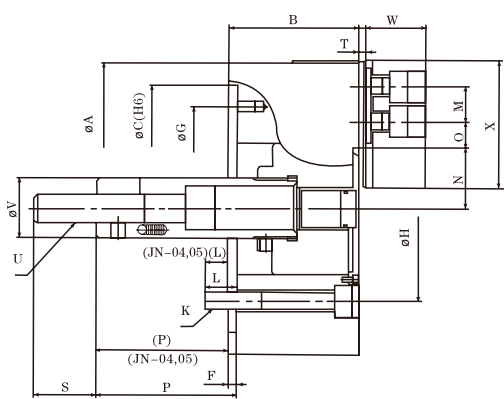
单爪中实长行程液压卡盘

Single-jaw medium solid long-stroke hydraulic chuck



1. 适用于加工异形件，比较经济。

1. It is suitable for processing special-shaped parts and is relatively economical.



性能参数 Performance parameters

DIMENSIC 型号TYPE	柱塞行程 Plunger Stroke (mm)	爪行程 (直径) Jaw Stroke (Diameter) (mm)	最高回转速 Max. Speed (r. p. m)	最大拉力 Max. Pull Force (kgf)	最大夹持力 Max. Gripping Force (kgf)	搭配油缸型号 Matching Cylinder	夹持范围 Gripping Range		最大设定液压压力 Max. Hydr. Pressure (kgf/cm ²)	净重 Net weight (Kg)
							最大Max	最小Max		
YS1-06	20	6.5	5000	1220	3460	SH-100	165	22	19(1.9)	13
YS1-08	21	8.1	4000	1630	4990	SH-125	210	24	16(1.6)	25
YS1-10	25	9	3500	1930	7140	SH-150	254	27	19(1.9)	37

尺寸参数 Size parameters

DIMENSI 型号TYPE	A (mm)	B (mm)	C(H6) (mm)	E (mm)	G (mm)	H (mm)	K (mm)	L (mm)	n (mm)	N max. (mm)	N min. (mm)
YS1-06	165	74	140	5	116	104.8	6-M10	14	20	37.8	33.55
YS1-08	210	85	170	5	150	133.4	6-M12	18	25	46.3	41.9
YS1-10	254	89	220	5	190	171.4	6-M16	20	30	51.4	47

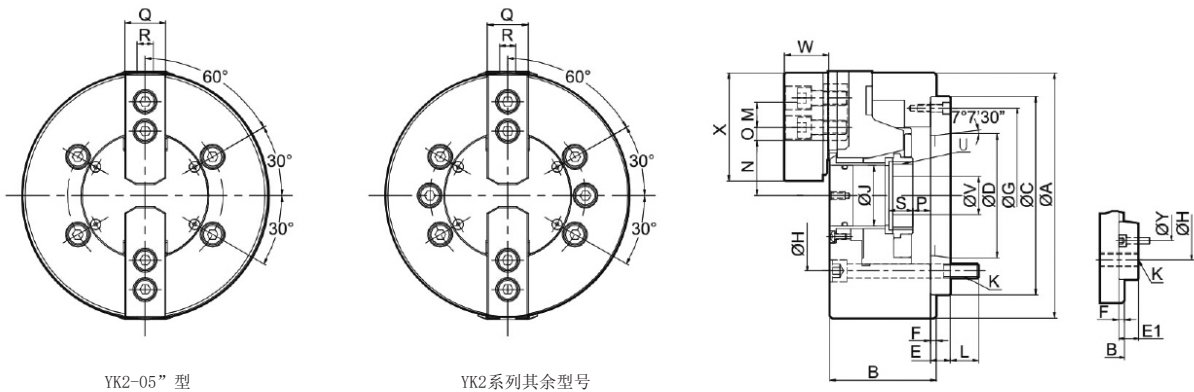
DIMENSI 型号TYPE	O man. (mm)	O min. (mm)	P man. (mm)	P min. (mm)	Q (mm)	R (mm)	S (mm)	T (mm)	U (mm)	"V (mm)"	"W (mm)"	"X (mm)"
YS1-06	18	7.5	101.5	81.5	31	12	36	4	M16X2.0P	34	39	73
YS1-08	22.5	9	127	106	35	14	36	5	M20X2.5P	38	42	95
YS1-10	37.5	10.5	158	133	40	16	36	5	M20X2.5P	45	46	110

YK2 | 二爪中空液压卡盘

2 jaw through-hole hydraulic chuck

1. 采用高级合金钢材料，表面均经表面硬化处理，以提高精度和耐用性。
2. 带法兰连接，A连接。

1. Adopt the advanced alloy steel material, all with the surface by surface hardening treatment, in order to improve the accuracy and durability.
2. With flange connection, A connection.



YK2-05" 型

YK2系列其余型号

性能参数 Performance parameters

型号/规格 Model/ Spec.	主轴头号 Nose Of Spindle	通孔直径 Thru-Hole Diameter (mm)	柱塞行程 Plunger Stroke (mm)	爪行程 (直径) Jaw Stroke (Diameter) (mm)	最高回转速 Max. Speed (r. p. m)	最大拉力 Max. Pull Force (kgf)	最大夹持力 Max. Gripping Force (kgF)	最大设定油压 压力 Max. Hydr. Pressure (kgf/cm ²)	净重 Net weight (Kg)	搭配油缸型 号Matching Cylinder	夹持范围 Gripping Range
YK2-04	-	26	10	5.4	8000	940	1930	16	3.8	TK428	Φ7~Φ110
YK2-05	A4	33	10	5.4	7000	1120	2340	19	6.5	TK536	Φ10~Φ135
YK2-06	A5	45	12	5.5	6000	1420	3770	18.5	13.1	TK646	Φ15~Φ169
YK2-08	A6 (A5)	52	16	7.4	4800	2240	5710	17	23	TK852	Φ20~Φ210
YK2-10	A8 (A6)	75	19	8.8	4200	2850	7440	18	35.9	TK1075	Φ25~Φ254
YK2-12	A8	91	23	10.6	3300	3670	9690	18	56.2	TK1291	Φ30~Φ304
YK2-15	A11 (A8)	117.5	23	10.6	2500	4790	12130	17	103.2	TK1512	Φ50~Φ381

尺寸参数 Size parameters

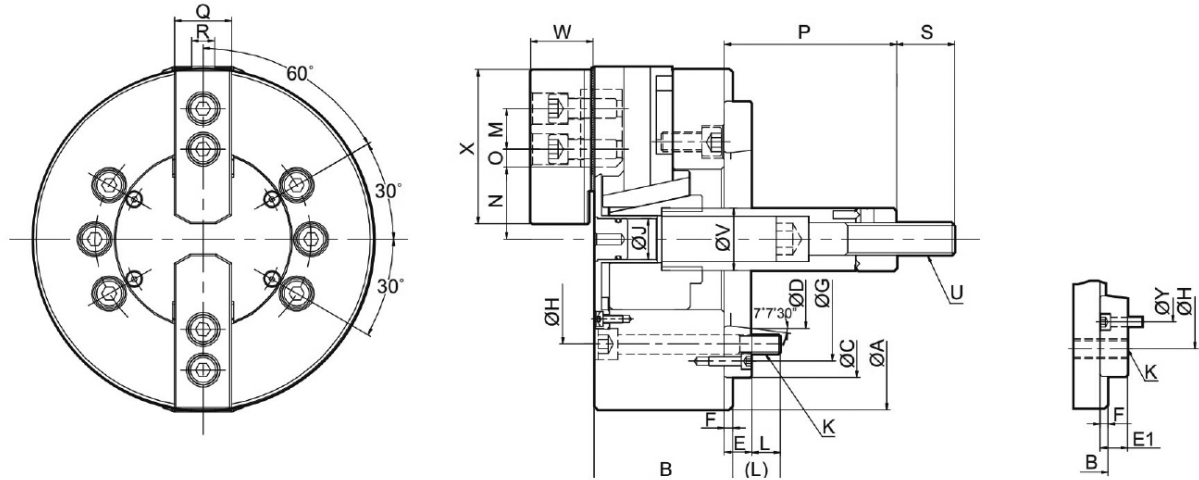
型号/规格 Model/ Spec.	A	B	C (h6)	D	E	E1	F	G	H	J	K	L	M	N max.	N min.	O max.	O min.	P max.	P min.	Q	R	S	U	W	X	Y
YK2-04	110	59	85	/	/	/	4	/	70.6	26	4-M10×1.5P	16	14	/	/	11	6.8	3.5	-6.5	25	10	17.5	M32×1.5	24	52	/
YK2-05	135	60	110	63.513	20	/	4	96	82.6	33	4-M10×1.5P	15	14	26.5	23.8	19	6	1	-9	25	10	20	M40×1.5P	31.5	62	/
YK2-06	169	81	140	82.563	15	/	5	116	104.4	45	6-M10×1.5P	16	20	32	29.25	24	7	11	-1	31	12	19	M55×2P	37	73	/
YK2-08	210	91	170	106.375	17	23	5	150	133.4	52	6-M12×1.75P	18	25	38.7	35	30	10	14.5	-1.5	35	14	20.5	M60×2P	39	95	104.8
YK2-10	254	100	220	139.719	18	28	5	190	171.4	75	6-M16×2P	19	30	51	46.6	34	12	8.5	-10.5	40	16	25	M85×2P	43	110	133.4
YK2-12	304	110	220	139.719	18	/	6	190	171.4	91	6-M16×2P	25	30	61.3	56	46	12	8	-15	50	21	28	M100×2P	51	129	/
YK2-15	380	133	300	196.869	22	33	6	260	235	117.5	6-M20×2.5P	28	43	82.7	77.4	46	13	8	-15	62	21	42.5	M130×2P	66	165	/

YS2 | 二爪中实液压卡盘

2 jaw solid hydraulic chuck

1. 采用高级合金钢材质，所有配合面经表面硬化处理，以提高精度和耐久性。
2. 含连接法兰，A型连接。

1. Adopt the advanced alloy steel material, all with the surface by surface hardening treatment, in order to improve the accuracy and durability.



性能参数 Performance parameters

型号/规格 Model/Spec.	主轴头号 Nose Of Spindle	柱塞行程 Plunger Stroke (mm)	爪行程 (直径) Jaw Stroke (Diameter) (mm)	最高回转速度 Max. Speed (r. p. m)	最大拉力 Max. Pull Force (kgf)	最大夹持力 Max. Gripping Force (kgf)	最大设定油压 压力 Max. Hydr. Pressure (kgf/cm ²)	净重 Net weight (Kg)	搭配油缸型 号 Matching Cylinder	夹持范围 Gripping Range
YS2-04	-	15	6.9	6000	540	1500	19	4.1	SH65	Φ5~Φ110
YS2-05	A4	15	6.4	5500	800	2450	22	5.4	SH80	Φ8~Φ135
YS2-06	A5	20	8.5	5000	1220	3460	17.3	11.1	SH100	Φ18~Φ165
YS2-08	A6(A5)	21	8.8	4000	1630	4990	16.3	21.3	SH125	Φ26~Φ210
YS2-10	A8(A6)	25	8.8	3500	1930	7140	19	32.6	SH150	Φ26~Φ254
YS2-12	A8	30	10.5	3000	2750	10300	18.4	57	SH200	Φ26~Φ304

尺寸参数 Size parameters

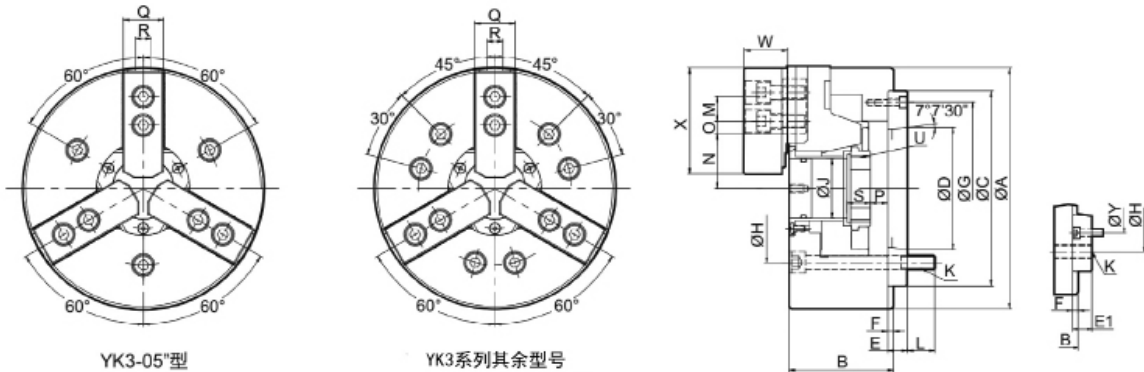
型号/规格 Model/ Spec.	A	B	C (h6)	D	E	E1	F	G	H	J	K	L	M	N max.	N min.	O max.	O min.	P max.	P min.	Q	R	S	U	V	W	X	Y
YS2-04	110	52	60	/	/	/	6	/	80	/	/	12	14	/	/	11.3	8.3	18	3	25	10	25	M10X1.5P	26	25	52	/
YS2-05	135	55	80	63.513	/	/	7	/	100	/	3-M10x1.5P	14	14	30.4	27.2	17	7	9	-6	25	10	35	M12X1.75P	28	31	62	/
YS2-06	165	74	140	82.563	15	/	5	116	104.8	21	6-M10×1.5P	14	20	37.8	33.25	18	7.5	107.5	87.5	31	12	36	M16×2P	34	36	73	/
YS2-08	210	85	170	106.375	17	25	5	150	133.4	25	6-M12×1.75P	20	25	46.3	41.9	22.5	9	127	106	35	14	36	M20×2.5P	38	42	95	104.8
YS2-10	254	89	220	139.719	18	28	5	190	171.4	34	6-M16×2P	20	30	51.4	47	37.5	10.5	158	133	40	16	36	M20×2.5P	45	44	110	133.4
YS2-12	304	106	220	139.719	18	/	5	190	171.4	34	6-M16×2P	20	30	60.7	55.45	47	11	163	133	50	18	36	M20×2.5P	50	54	130	/

YK3 | 三爪中空液压卡盘

3 jaw through-hole hydraulic chuck

1. 采用高级合金钢材质，所有配合面经表面硬化处理，以提高精度和耐久度。
2. 含连接法兰，A型连接。

1. Adopt the advanced alloy steel material, all with the surface by surface hardening treatment, in order to improve the accuracy and durability.



性能参数 Performance parameters

型号/规格 Model/Spec.	主轴头号 Nose Of Spindle	通孔直径 Thru-Hole Diameter (mm)	柱塞行程 Plunger Stroke (mm)	爪行程 (直径) Jaw Stroke (Diameter) (mm)	最高回转速 Max. Speed (r. p. m)	最大拉力 Max. Pull Force (kgf)	最大夹持力 Max. Gripping Force (kgf)	最大设定油压 压力 Max. Hydr. Pressure (kgf/cm ²)	净重 (Kg)	搭配油缸型 号Matching Cylinder	夹持范围 Gripping Range
YK3-04	-	26	10	5.4	8000	1400	2900	23	4	TK428	Φ7~Φ110
YK3-05	A4	33	10	5.4	7000	1730	3570	29	6.1	TK536	Φ10~Φ135
YK3-06	A5	45	12	5.5	6000	2140	5710	28	12.5	TK646	Φ15~Φ169
YK3-08	A6 (A5)	52	16	7.4	5000	2549	8769	27	23.6	TK852	Φ20~Φ210
YK3-10	A8 (A6)	75	19	8.8	4200	4280	11010	27	33.7	TK1075	Φ25~Φ254
YK3-12	A8	91	23	10.6	3300	5500	14380	27	55.3	TK1291	Φ30~Φ304
YK3-15	A11 (A8)	117.5	23	10.6	2500	7240	18250	25	106.8	TK1512	Φ49~Φ381
YK3-18	A11 (A8)	117.5	23	10.6	2000	7240	18250	25	171	TK1512	Φ79~Φ450
YK3-21	A15 (A11)	180	23	10.6	1800	9170	23860	24	234	TK1512	Φ105~Φ530
YK3-24	A15 (A11)	205	26	12	1400	10000	24500	21	284	TK1512	Φ135~Φ610
YK3-32	A15	205	34	18	800	10000	24500	21	560	TK1512	Φ205~Φ800

尺寸参数 Size parameters

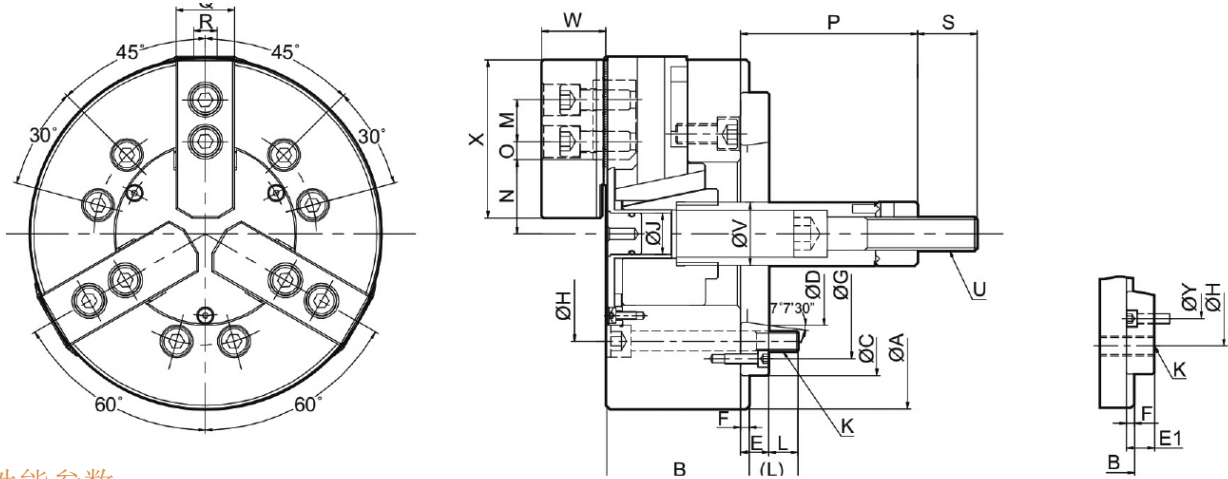
型号/规格 Model/Spec.	A	B	C (h6)	D	E	E1	F	G	H	J	K	L	M	N max.	N min.	O max.	O min.	P max.	P min.	Q	R	S	U	W	X	Y	Y
YK3-04	110	59	85	-	-	-	4	-	70.6	26	3-M6x1.25P	16	14	-	-	11	6	3.5	-6.5	25	10	17.5	M32x1.5P	24	52	-	-
YK3-05	135	60	110	63.513	20	-	4	96	82.6	32.5	3-M8x1.25P	15	14	-	-	19	6	1	-9	25	10	20	M40x1.5P	31.5	62	-	-
YK3-06	169	81	140	82.563	15	-	5	116	104.8	45	6-M10x1.5P	16	20	32.35	59.6	24	7	11	-1	31	12	19	M55x2P	37	73	-	-
YK3-08	210	91	170	106.375	17	25	5	150	133.4	52	6-M12x1.75P	18	25	38.7	35	29.75	14.75	14.5	-1.5	35	14	20.5	M60x2P	39	95	104.8	104.8
YK3-10	254	100	220	139.719	18	28	5	190	171.4	75	6-M16x2P	19	30	51.5	47.1	34	12	8.5	-10.5	40	16	25	M85x2P	48	110	133.4	133.4
YK3-12	304	110	220	139.719	18	-	6	190	171.4	91	6-M16x2P	25	30	61.6	56.3	46	12	8	-15	50	21	28	M100x2P	51	129	-	-
YK3-15	381	133	300	196.869	22	33	6	255	235	117.45	6-M20x2.5P	27	43	82.3	77	46	13	7	-16	62	22	42.5	M130x2P	66	165	171.4	171.4
YK3-18	450	133	300	196.869	22	33	6	260	235	117.5	6-M20x2.5P	28	43	82.7	76.7	79.25	13.75	7	-16	62	24	42.5	M130x2P	66	165	171.4	171.4
YK3-21	530	134	380	285.78	32	22	6	330	330	180	6-M24	35	60	112.5	107.2	60.5	24.5	11	-12	65	25	38	M190x3P	73	180	-	-
YK3-24	610	147	520	285.78	32	22	6	330	463	205	6-M24	35	60	131.9	125.9	87.5	24.5	16	-10	65	25	38	M215x3P	73	180	-	-
YK3-32	800	150	520	285.78	32	22	6	330	463	205	6-M24	35	60	162	153	153.5	24.5	16	-10	65	25	38	M250x3P	73	180	-	-

YS3 | 三爪中实液压卡盘

3 jaw solid hydraulic chuck

1. 采用高级合金钢材质，所有配合面经表面硬化处理，以提高精度和耐久度。
2. 含连接法兰，A型连接。

1. Adopt the advanced alloy steel material, all with the surface by surface hardening treatment, in order to improve the accuracy and durability.



性能参数 Performance parameters

型号/规格 Model/Spec.	主轴头号 Nose Of Spindle	柱塞行程 Plunger Stroke (mm)	爪行程 (直径) Jaw Stroke (Diameter) (mm)	最高回转速 Max. Speed (r. p. m)	最大拉力 Max. Pull Force (kgf)	最大夹持力 Max. Gripping Force (kgf)	最大设定油压 压力 Max. Hydr. Pressure (kgf/cm ²)	净重 Net weight (Kg)	搭配油缸型 号 Matching Cylinder	夹持范围 Gripping Range
YS3-04	-	15	5.4	6000	800	2300	22	4.1	SH80	Φ5~Φ110
YS3-05	A4	15	5.4	5500	800	2450	22	6	SH80	Φ8~Φ135
YS3-06	A5	20	5.4	5000	1730	5200	27	11.4	SH100	Φ18~Φ165
YS3-08	A6(A5)	21	7.4	4600	2440	7440	25	21.9	SH125	Φ26~Φ210
YS3-10	A8(A6)	25	8.8	4000	2850	10810	29	33.4	SH150	Φ26~Φ254
YS3-12	A8(A6)	30	10.5	3200	4080	15500	29	58.5	SH200	Φ26~Φ304
YS3-15	A11	35	16	2800	8260	25290	32.5	100.6	SH200	Φ50~Φ381
YS3-18	A11(A8)	35	16	2500	8260	25290	32.5	134.3	SH200	Φ60~Φ450
YS3-21	A15(A11)	35	16	1900	8360	27800	28	194	SH200	Φ60~Φ500
YS3-24	A15(A11)	35	16	1750	8360	27800	28	246	SH200	Φ150~Φ630
YS3-32	A15	35	16	1750	8360	27800	28	350	SH250	Φ150~Φ800

尺寸参数 Size parameters

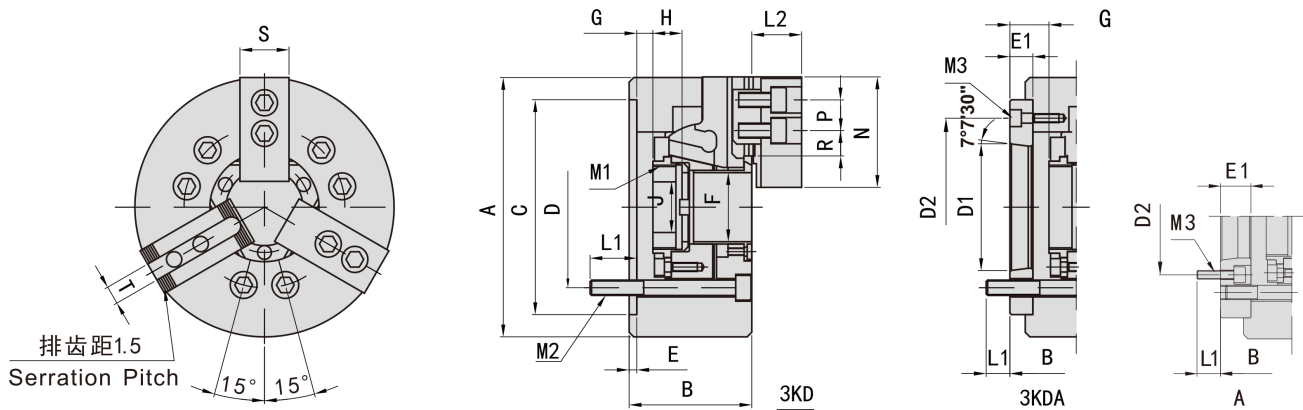
型号/规格 Model/ Spec.	A	B	C (h6)	D	E	E1	F	G	H	J	K	L	M	N max.	N min.	O max.	O min.	P max.	P main.	Q	R	S	U	V	W	X	Y
YS3-04	110	52	60	-	-	-	6	-	80	-	-	12	12	-	-	11.3	8.3	18	3	25	10	25	M10×1.5P	26	-	52	-
YS3-05	135	55	80	63.513	-	-	7	-	100	-	3-M8×1.25P	14	14	30.4	27.2	17	7	9	-6	25	10	35	M12×1.75P	28	31	62	-
YS3-06	165	74	140	82.563	15	-	5	116	104.8	21	6-M10×1.5P	14	20	37.8	33.25	18	7.5	101.5	81.5	31	12	36	M16×2P	34	39	73	-
YS3-08	210	85	170	106.375	17	26	5	150	133.4	25	6-M12×1.75P	18	25	46.3	41.9	22.5	9	127	106	35	14	36	M20×2.5P	38	42	95	104.8
YS3-10	254	89	220	139.719	18	28	5	190	171.4	34	6-M16×2P	25	30	51.4	47	37.5	10.5	158	133	40	16	36	M20×2.5P	45	46	110	133.4
YS3-12	304	106	220	139.719	18	-	6	190	171.4	34	6-M16×2P	25	30	60.7	55.45	47	11	163	133	50	18	36	M20×2.5P	50	54	129	-
YS3-15	381	114	300	196.869	22	-	6	260	235	-	6-M20×2.5P	32	43	77.5	69.5	50.25	23.25	104	69	62	25.5	55	M30×3.5P	60	63	165	-
YS3-18	450	114	300	196.869	22	-	6	260	235	-	6-M20×2.5P	32	43	108	110	49.5	25.5	92	57	62	25.5	55	M30×3.5P	60	63	165	-
YS3-21	530	131	-	285.78	32	-	6	-	330	60	6-M24	31	60	86	78	93.5	27.5	97	62	65	25	55	M30×3.5P	60	70	180	-
YS3-24	610	131	-	285.78	32	-	6	-	330	60	6-M24	31	60	125	117	93.5	27.5	97	62	65	25	55	M30×3.5P	60	70	180	-
YS3-32	800	135	-	285.78	32	-	6	-	330	70	6-M24	39	60	99.4	89.4	212.5	32.5	35	-3	65	25	73	M36×4.0P	102	82	185	-

YK3-DK | 三爪大孔径中空液压卡盘

3-jaw large thru-hole power chuck

1. 是一种中心通孔卡盘，适用于加工棒类等广泛的零件。
2. 能更换硬爪。
3. 使用连接法兰。（爪数有二爪、三爪、四爪）。

1. It is a centering-through-hole chuck, which is suitable for processing extensive types of common machinery parts, such as rod-type parts.
2. Its hard jaws can be replaced.
3. Please connect flange before using. (Type: two jaws; three jaws; four



性能参数 Performance parameters

型号/规格 Model/Spec.	通孔直径 Thru-Hole (DIA. mm)	柱塞行程 Plunger Stroke (mm)	爪行程 (直径) Jaw Stroke (DIA. mm)	最高回转速 Max. Speed (min ⁻¹)	最大拉力 Max. Pull Force kgf (kN)	最大静夹持力 Max. Gripping Force kgf (kN)	搭配油缸型号 Matching Cylinder	夹持范围 Gripping Range (mm)		最高使用压力 Max. Pressure kgf/cm ² (Mpa)	重量 Weight (kg)
								最大Max	最小Min		
YK3-06DK	52.0	12	5.5	6000	2140 (21)	5700 (56)	TK646	168	13	28 (2.7)	12.5
YK3-08DK	66.0	16	7.4	4800	3350 (33)	8350 (82)	TK852	210	16	26 (2.5)	22.0
YK3-10DK	85.0	19	8.8	4200	4280 (42)	11000 (108)	TK1075	254	25	27 (2.6)	33.6

尺寸参数 Size parameters

型号/规格 Model/Spec.	A (mm)	B (mm)	C(H6) (mm)	F (mm)	G (mm)	H (mm)	J (mm)	K (mm)	L (mm)	M (mm)	N max (mm)	N min. (mm)
YK3-06DK	168	140	140	5	116	104.8	45	6-M10×1.5P	15	20	32.0	29.25
YK3-08DK	210	170	170	5	150	133.4	52	6-M12×1.75P	16	25	38.7	35.00
YK3-10DK	254	220	220	5	190	171.4	75	6-M16×2P	16	30	51.0	46.60

型号/规格 Model/Spec.	O max. (mm)	O min. (mm)	P max. (mm)	P min. (mm)	Q (mm)	R (mm)	S (mm)	T (mm)	U (mm)	V (mm)	W (mm)	X (mm)
YK3-06DK	24	7	11	-1	31	12	19.0	2	M60×2P	20	37	73
YK3-08DK	30	10	14.5	-1.6	35	14	20.0	2	M75×2P	30	39	95
YK3-10DK	34	12	8.5	-10.5	40	16	25.0	2	M95×2P	40	43	110

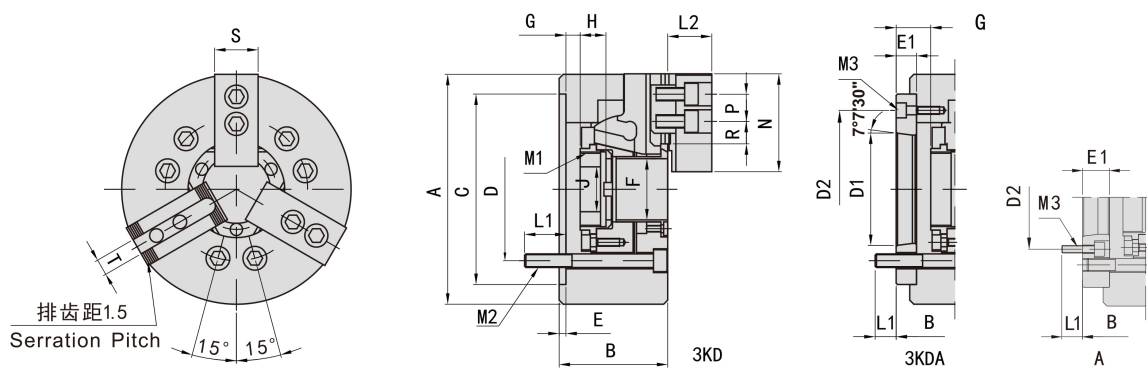
YK3-D | 三爪中空大行程液压卡盘

Three-jaw hollow large-stroke hydraulic chuck



1. 曲柄型三爪超大车贯通孔径，超长爪行程。
2. 滑动面均经硬化及精密研磨，并直接润滑。
3. 安装连接方式与中空卡盘一样，且可与之相容交换，不必更改拉杆。
4. 高刚性结构及高夹持精度。

1. The crank-type three-jaw super-large car has a through-aperture and super-long jaw stroke.
2. The sliding surfaces are hardened and precision ground, and directly lubricated.
3. The installation and connection method is the same as that of the hollow chuck, and it can be exchanged with it without changing the pull rod.



性能参数 Performance parameters

型号/规格 Model/Spec.	楔心行程 Wedge stroke (mm)	爪行程 Claw stroke (直径) (diameter) (mm)	最大容许推力 Maximum allowable thrust (kgf)	最大夹持力 Maximum clamping force (kgf)	最大使用油压力 Maximum operating oil pressure (kgf)	最大转速 Maximum speed (r. p. m)	重量 Weight (kg)	惯性矩 (kg. m ²)	适配油缸 Adapter cylinder	外径夹持范围 Outer diameter clamping range (mm)
YK3-06D	13	26	2400	2650	27	3600	14.8	0.063	TK646	ø10-ø168
YK3-08D	16	28	3500	4150	26	3000	24.1	0.175	TK852	ø10-ø210
YK3-10D	22	32	4870	5700	27	2400	43.5	0.347	TK1075	ø18-ø254

尺寸参数 Size parameters

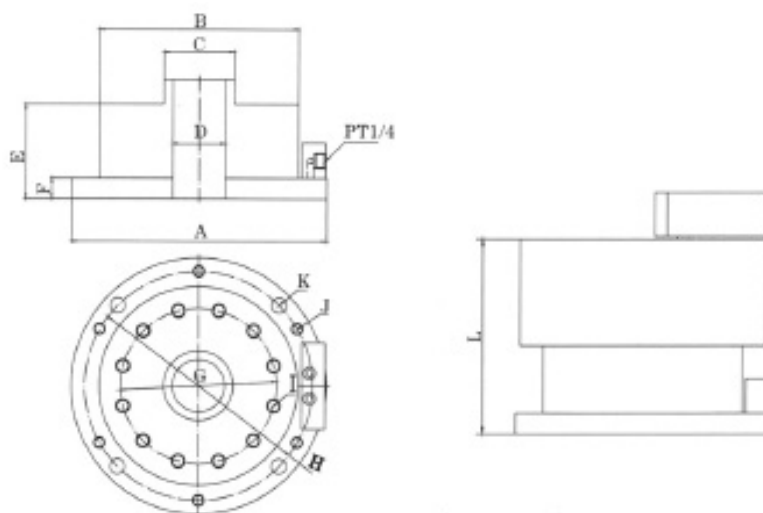
型号/规格 Model/Spec.	A	B	C(H6)	D	D1	D2	E	E1	F	Gmax	Gmin	H	J
YK3-06D	168	90	140	104.78	82.563	116	5	18	45	6.5	-8.5	19	45
YK3-08D	210	100	170	133.35	106.375	150	5	23	52	7	-13	20	52
YK3-10D	254	110	220	171.45	139.719	190	5	18	75	8	-17	25	75

型号/规格 Model/Spec.	Kmax	L	L1	M	N	P	Qmax	Qmin	Rmax	Rmin	S	T	U
YK3-06D	M55*2	6-M10	15	37	73	20	25.75	13.75	39	27.0	31	12	3-M6
YK3-08D	M60*2	6-M12	18	38	95	25	28.25	16.25	49.25	33.25	35	14	3-M6
YK3-10D	M85*2	6-M16	22	43	110	30	35.25	17.25	64.25	45.25	40	16	3-M8

YK3-L | 三爪立式中空液压卡盘

Vertical through-hole hydraulic chuck

1. 专利产品，立式带板形。
 2. 内置气缸结构，安装方便。
 3. 该夹头适用于加工中心、钻床、铣床。
 4. 有两爪和四爪可供选择。
1. Patented product, vertical strip shape.
 2. Built-in cylinder structure, convenient for installation.
 3. This chuck is applicable for machining center, driller and miller.
 4. Two-claw and four-claw are available.



性能参数 Performance parameters

型号/规格 Model/Spec.	爪行程（直径） Jaw stroke (diameter) (mm)	最大夹紧力 Maximum static clamping force KN(Kgf)	最大静态撑紧力 Maximum static holding force KN(Kgf)	许用压力 Permissible pressure (Mpa)	夹紧范围 Clamping range	撑紧范围 Holding range	净重 Net weight (kg)
YK3-04L	3.2	2440	1630	0.4-1.5	3-115	15-120	7.8
YK3-05L	3.6	3060	2040	0.4-1.5	5-130	15-140	11.5
YK3-06L	4.0	5300	3460	0.4-1.5	5-170	20-180	20.3
YK3-08L	5.0	8360	5100	0.4-1.5	10-210	25-230	32.9
YK3-10L	5.7	11520	7140	0.4-1.5	20-250	30-260	45.5
YK3-12L	8.5	13660	9990	0.4-1.0	30-320	40-340	92.3
YK3-15L	10	19890	13260	0.4-1.0	40-400	60-420	148

尺寸参数 Size parameters

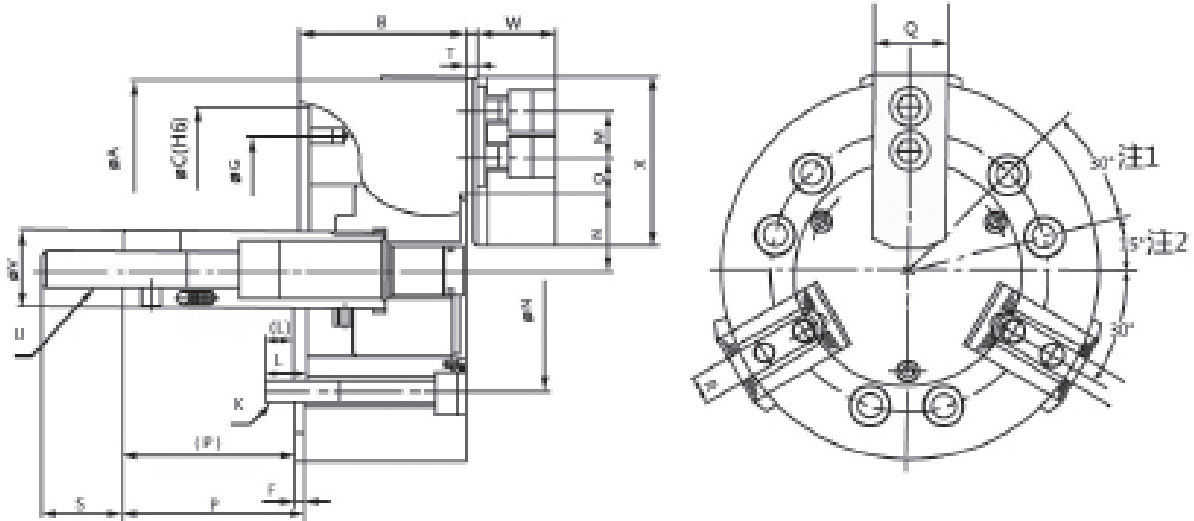
型号/规格 Model/Spec.	D	D1	d	L1	L2	L3	H	H1	h	p
YK3-04L	115	158	16	2~15	120	/	117	94	22	14
YK3-05L	135	175	23	2~15	140	/	132.5	102	26	14
YK3-06L	172	218	36	2~17	180	/	150	115	26	20
YK3-08L	212	265	52	2~17	222	/	158.5	120.5	35	25
YK3-10L	252	310	66/75	2~20	260	/	162	125	36	30
YK3-12L	328	400	91	4~20	340	150	197	146	39	30
YK3-15L	400	480	110/140	4~22	420	150	226	157	39	43

YS3-C | 三爪中实长行程液压卡盘

3 jaw solid hydraulic chuck

1. 它适用于加工一般零件，比较经济。（爪数有二爪、三爪）。

1. It is suitable for processing general machinery parts and it is cost-efficient.
(Type: two jaws; three jaws).



性能参数 Performance parameters

型号/规格 Model/Spec.	柱塞行程 Plunger Stroke (mm)	爪行程（直径） Jaw Stroke (DIA. mm)	最高回转速度 Max. Speed (min ⁻¹)	最大拉力 Max. Pull Force kgf (kN)	最大静夹持力 Max. Gripping Force kgf (kN)	搭配油缸型号 Matching Cylinder	夹持范围 Gripping Range (mm)		最高使用压力 Max. Pressure kgf/cm ² (Mpa)	重量 Weight (kg)
							最大Max	最小Min		
YS3-06C	20	13	5000	1730 (17)	5200 (51)	SH100	165	19	27 (2.6)	13.0
YS3-08C	21	16.2	4600	2440 (22)	7440 (73)	SH125	210	23	25 (2.5)	25.0
YS3-10C	25	18.1	4000	2850 (28)	10810 (103)	SH150	254	24	29 (2.8)	37.0

尺寸参数 Size parameters

型号/规格 Model/Spec.	A (mm)	B (mm)	C(H6) (mm)	F (mm)	G (mm)	H (mm)	K (mm)	L (mm)	M (mm)	N max (mm)	N min (mm)
YS3-06C	165	74	140	5	116	104.8	6-M10	14	20	37.8	33.55
YS3-08C	210	85	170	5	150	133.4	6-M12	18	25	46.3	41.90
YS3-10C	254	89	220	5	190	171.4	6-M16	20	30	51.4	47.00

型号/规格 Model/Spec.	O max. (mm)	O min. (mm)	P max. (mm)	P min. (mm)	Q (mm)	R (mm)	S (mm)	T (mm)	U (mm)	V (mm)	W (mm)	X (mm)
YS3-06C	18	7.5	101.5	81.5	31	12.0	36	4	M16×2.0P	34	39	73
YS3-08C	22.5	9	127	106.0	35	14.0	36	5	M20×2.5P	38	42	95
YS3-10C	37.5	10.5	158	133.0	40	16.0	36	5	M20×2.5P	45	46	110

YS3-D | 三爪超大长行程液压卡盘

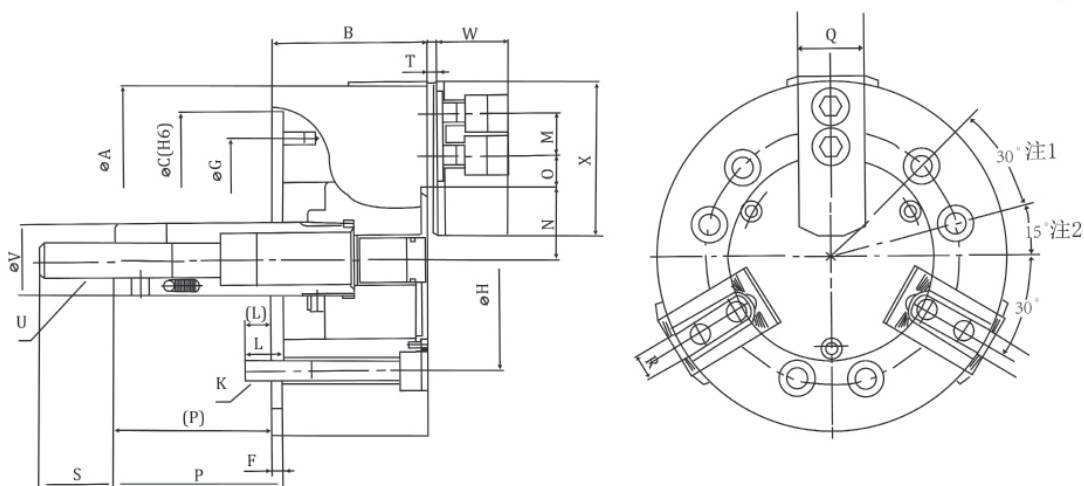
3 jaw solid power chucks



1. 是一种曲柄型三爪超大行程卡盘，加紧力大。
2. 可做二爪。

1. It is a crank type three-jaw mega-long stroke chuck, which can be used to do heavy cutting.

2. It can be used as two claws.



性能参数 Performance parameters

型号/规格 Model/Spec.	柱塞行程 Plunger Stroke (mm)	爪行程(直径) Jaw Stroke (DIA. mm)	最高回转速度 Max. Speed (min ⁻¹)	最大拉力Max. Pull Force kgf (KN)	最大静夹持力 Max. Gripping Force kgf (KN)	搭配油缸型 号Matching Cylinder	夹持范围 Gripping Range (mm)		最高使用压力 Max. Pressure kgf/cm ² (Mpa)	重量 Weight (kg)
							最大Max	最小Min		
YS3-06D	20	28	5000	1730 (17)	5200 (51)	SH100	165	19	27 (2.6)	13.0
YS3-08D	25	40	4600	2440 (22)	7440 (73)	SH125	210	23	25 (2.5)	25.0
YS3-10D	30	50	4000	2850 (28)	10810 (103)	SH150	254	14	29 (2.8)	37.0

尺寸参数 Size parameters

型号/规格 Model/Spec.	A (mm)	B (mm)	C(H6) (mm)	F (mm)	G (mm)	H (mm)	K (mm)	L (mm)	M (mm)	N max (mm)	N min (mm)
YS3-06D	165	80	140	5	116	104.8	6-M10	14	20	37.8	33.6
YS3-08D	215	92	170	5	150	133.4	6-M12	18	25	46.3	41.90
YS3-10D	254	115	220	5	190	171.4	6-M16	20	30	51.4	47.00

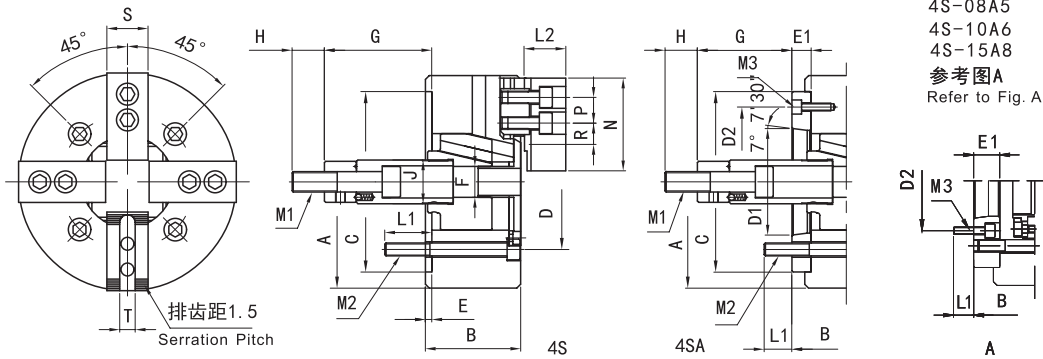
型号/规格 Model/Spec.	O max. (mm)	O min. (mm)	P max. (mm)	P min. (mm)	Q (mm)	R (mm)	S (mm)	T (mm)	U (mm)	V (mm)	W (mm)	X (mm)
YS3-06D	18	7.5	101.5	81.5	31	12.0	36	4	M16×2.0P	34	39	73
YS3-08D	22.5	9	127	106.0	35	14.0	36	5	M20×2.5P	38	42	95
YS3-10D	37.5	10.5	158	133.0	40	16.0	36	5	M20×2.5P	45	46	110

YS4 | 四爪中实液压卡盘

4 jaw solid power chucks

1. 高速运转平稳，坚固耐用
2. 重复定位精度高，夹紧力大。
3. 特别适合异形工件的夹持。

1. High speed stability, Strong and durable.
2. High accuracy of repeat positioning, Clamping force is big
3. Specially suited for irregular shape.



4S-08A5
4S-10A6
4S-15A8
参考图A
Refer to Fig. A

性能参数 Performance parameters

型号/规格 MODEL/SPEC.	楔心行程 Plunger stroke (mm)	爪行程 (直径) Jaw stroke (Dia) mm	许用推拉力 Max. Pull force KN (kgf)	最大夹紧力 Max. Gripping range (mm)	极限转速 Max. Speed r/min	夹紧范围 Gripping range (mm)	惯量 Moment of inertial Kg. m ²	重量 Weight kg	适用油缸 Matching cylinder	最大使用油缸 压力 Max. pressure MPa (kgf/cm ²)	
YS4-06	A5	20	17.9 (1830)	52.4 (5350)	5250	14-165	0.05	13	14	SH-100	2.5 (25)
YS4-08	A5	21	25 (2550)	74.5 (7600)	4750	17-210	0.14	24	28	SH-125	2.3 (23)
	A6										
YS4-10	A6	25	28.9 (2950)	107.8 (11000)	4000	22-254	0.30	35	42	SQ-160B	2.6 (26)
	A8										
YS4-12	A8	30	41 (4180)	155.8 (15900)	3360	22-304	0.73	59	63	SH-150	2.6 (26)
YS4-15	A8	35	82 (8360)	248.4 (23350)	3000	50-381	1.95	100	114	SH-200	3.2 (32)
	A11										

尺寸参数 Size parameters

型号/规格 MODEL/SPEC.	A	B			C H6	D	D1	D2	E	E1	F	C		H	J	
		max	min	max								min				
YS4-06	A5	165	74	84	140	104.8	82.56	116	5	15	21	101.5	86.5	81.58	66.5	34
YS4-08	A5	210	85	103	170	133.4	106.38	104.8		23	25	127	104	106	83	
	A6			97				150	17	110			89			
YS4-10	A6	254	89	109	220	171.4	139.72	133.4	34	18	158	133	133	108	45	
	A8			102				190				25		140		115
YS4-12	A8	304	106	118	300	235	196.87	171.4	6	33	163	145	69	36	55	
YS4-15	A8	381	114	141	300	235	196.87	260				22		—		104
	A11			130			196.87	260	22	82	47					

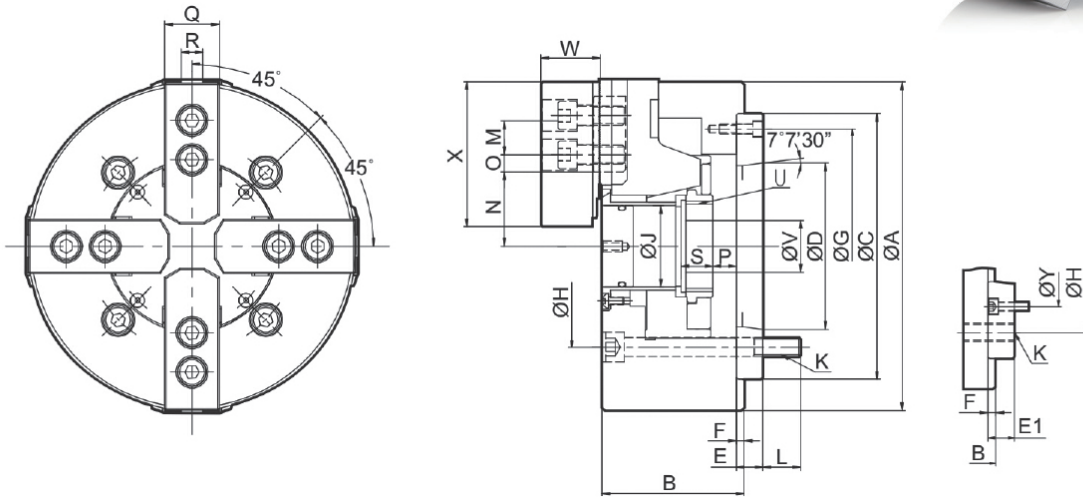
型号/规格 MODEL/SPEC.	L1	L2	M1	M2	M3	N	P	R		S	T		
								max	min				
YS4-06	A5	14	14	39	M16×2	4-M10	4-M6	73	20	18	7.5	31	12
YS4-08	A5	20	17	41	M20×2.5	4-M12	6-M10	95	25	22.3	11.8	35	14
	A6		18				4-M6						
YS4-10	A6	18	25	46	M20×2.5	4-M16	6-M12	110	30	30.8	11.3	40	16
	A8						25						
YS4-12	A8	22	25	54	M20×2.5	4-M16	4-M8	130	30	48.8	12.3	50	18
YS4-15	A8	30	29	63	M30×3.5	4-M20	6-M16	165	43	48.8	23.3	62	25.5
	A11		33				4-M10						

YK4 | 四爪中空液压卡盘

4 jaw through-hole hydraulic chuck

1. 采用高级合金钢材质，所有配合面经表面硬化处理，以提高精度和耐久性。
2. 含连接法兰，A型连接。

1. Adopt the advanced alloy steel material, all with the surface by surface hardening treatment, in order to improve the accuracy and durability.
2. With flange connection, A connection.



性能参数 Performance parameters

型号/规格 MODEL/ SPEC.	主轴头号 Nose Of Spindle	通孔直径 Thru-Hole (Diameter) (mm)	柱塞行程 Plunger Stroke (mm)	爪行程 (直径) Jaw Stroke (Diameter) (mm)	最高回转速 Max. Speed (r. p. m)	最大拉力 Max. Pull Force (KN) kgf (KN)	最大夹持力 Max. Gripping Force (kgf)	最大设定油压 压力 Max. Hydr. Pressure (kgf/cm ²)	净重 Net weight (kg)	搭配油缸型号 Matching Cylinder	夹持范围 Gripping Range
YK4-06	A5	45	12	5.5	4500	1630	4180	21	14.2	TK646	Φ15~Φ169
YK4-08	A6 (A5)	52	16	7.4	3600	2440	6010	19	24.5	TK852	Φ20~Φ210
YK4-10	A8 (A6)	75	19	8.8	3200	3160	8050	20	38.1	TK1075	Φ26~Φ254
YK4-12	A8	91	23	10.6	2500	4080	10400	20	60.5	TK1291	Φ30~Φ304
YK4-15	A11 (A8)	117.5	23	10.6	1800	5400	12600	19	111.5	TK1512	Φ50~Φ381

尺寸参数 Size parameters

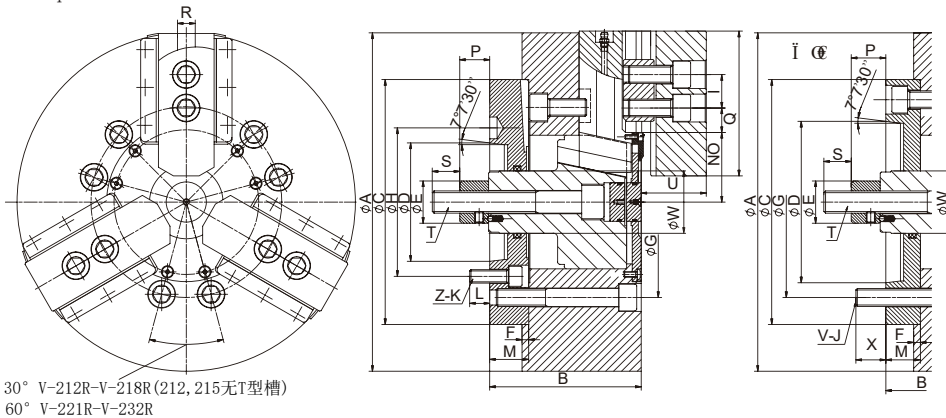
型号/规格 MODEL/ SPEC.	A	B	C (h6)	D	E	E1	F	G	H	H1	J	K	L	M	N max.	N min.	O max.	O min.	P max.	P min.	Q	R	S	W	U	X
YK4-06	169	81	140	82.536	15	/	5	116	104.4	PCDΦ145	45	6-M10×1.5P	16	20	32	29.25	24	7	11	-1	31	12	19	37	M55×2P	73
YK4-08	210	91	170	106.375	17	23	5	150	133.4	PCDΦ180	52	6-M12×1.75P	18	25	38.7	35	30	10	14.5	-1.5	35	14	20.5	39	M60×2P	95
YK4-10	254	100	220	139.719	18	28	5	190	171.4	PCDΦ225	75	6-M16×2P	25	30	51	46.6	34	12	8.5	-10.5	40	16	25	43	M85×2P	110
YK4-12	304	110	220	139.719	18	/	6	190	171.4	PCDΦ250	91	6-M16×2P	25	30	61.3	56	46	12	8	-15	50	21	28	51	M100×2P	129
YK4-15	380	133	300	196.869	22	33	6	260	235	PCDΦ324	117.5	6-M20×2.5P	28	43	82.7	77.4	46	13	8	-15	62	21	42.5	66	M130×2P	165

K3L | 立车卡盘

vertical lathe chucks

1. 立车卡盘适用于立式车床，盘体端面有密封，可防止铁屑、切削水进入卡盘内部，延长卡盘的使用寿命，还可根据用户特殊要求进行三、四、六爪的设计。法兰盘也有密封，防止切削水进入机床主轴内，并可根据要求配各种形式的法兰。

1. vertical lathe chucks are suitable for vertical lathes. There is a seal on the end face of the disc body, which can prevent iron filings and cutting water from entering the chuck and prolong the service life of the chuck. Six claw design. The flange is also sealed to prevent cutting water from entering the spindle of the machine tool, and can be equipped with various types of flanges according to requirements.



性能参数 Performance parameters

型号/规格 Model/Spec.	楔心套行程 (mm)	卡爪行程 (直径mm)	最大推拉力 (KN)	最大夹紧力 (KN)	最高转速 (r. p. m)	配用油缸
K3L-12/A8	26	11	50	120	3300	SH150
K3L-15/A8	35	16	80	200	2800	SH150
K3L-15/A11	35	16	80	200	2800	SH200
K3L-18/A8	35	16	80	200	2500	SH200
K3L-18/A11	35	16	80	200	2500	SH200
K3L-21/A11	33	17.6	90	225	1200	SH200
K3L-24/A11	38	20.3	90	225	100	SH250
K3L-32/A11	35	18.7	90	225	800	SH250

尺寸参数 Size parameters

型号/规格 Model/Spec.	A	B	C	D	E	F	G	H	I	J	Z-K	L
K3L-12/A8	304	137	220	139.719	50	6	171.4	-	30	6-M16	-	-
K3L-15/A8	381	155	300	139.719	60	6	235	171.4	43	6-M20	6-M16	22
K3L-15/A11	381	155	300	196.869	60	6	235	-	43	6-M20	-	-
K3L-18/A8	450	155	300	139.719	60	6	235	171.4	43	6-M20	6-M16	22
K3L-18/A11	450	155	300	193.869	60	6	235	-	43	6-M20	-	-
K3L-21/A11	530	169	380	196.869	60	6	330.2	235	60	6-M24	6-M20	27
K3L-24/A11	610	171	380	196.869	60	6	330.2	235	60	6-M24	6-M20	27
K3L-32/A11	810	174	380	196.869	60	6	330.2	235	80	6-M24	6-M20	27

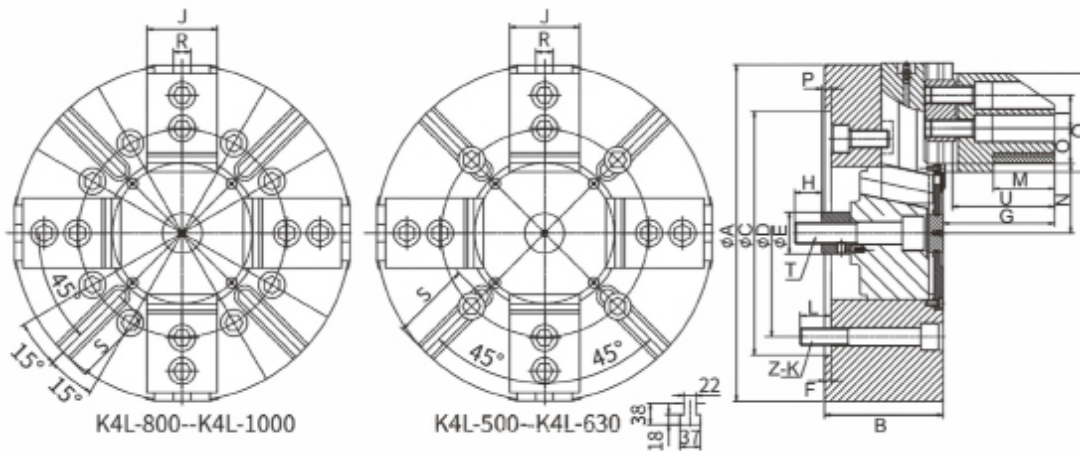
型号/规格 Model/Spec.	M	N		O		P		Q	R	S	T	U	W	X	梳齿
		MAX	MIN	MAX	MIN	MAX	MIN								
K3L-12/A8	36	62.5	57	47.8	18	78	52	130	21	35	M20	57	70	23	1.5*60°
K3L-15/A8	36	86.5	78.5	44	23	71	36	165	25.5	55	M30	70	60	-	1.5*60°
K3L-15/A11	36	86.5	78.5	44	23	82	47	165	25.2	54	M30	70	60	34	1.5*60°
K3L-18/A8	36	86.5	78.5	78.5	23	59	24	165	25.2	57	M30	70	60	-	1.5*60°
K3L-18/A11	36	86.5	78.5	78.5	23	71	36	165	25.5	55	M30	70	60	33	1.5*60°
K3L-21/A11	45	100	91.2	87	30	68	35	180	25	52	M30	78	70	-	3.0*60°
K3L-24/A11	45	107	96.9	119	30	73	35	180	25	42	M30	78	70	-	1.5*60°
K3L-32/A11	45	117	107.7	212	33	47	12	225	25	55	M30	101	70	-	1.5*60°

K4L | 破碎锤卡盘

breaker chucks

1. K4L系列破碎锤卡盘适用于加工破碎锤缸体的车床使用，我们可以根据用户加工的工件，专门设计了特殊的卡爪，可以实现一付卡爪加工几种不同尺寸的工件，还可以根据用户需要加装油缸，液压站等，并可根据要求配各种形式的法兰。

1. K4L series breaker chucks are suitable for use on lathes for processing breaker cylinders. We can specially design special jaws according to the workpieces processed by users, which can realize one set of jaws for processing several different sizes of workpieces. If need can install oil cylinders, hydraulic stations, etc., and can provide various forms of flange according to the requirements.



性能参数 Performance parameters

型号/规格 Model/Spec.	楔心套行程 (mm)	卡爪行程 (直径mm)	最大推拉力 (KN)	最大夹紧力 (KN)	最高转速 (r. p. m)	配用油缸	
K4L	500	33	17.6	81	245	900	SH200
	630	38	20.3	81	245	700	SH200
	800	40	21.4	81	245	500	SH200
	910	57	30.5	92	276	400	SH250
	1000	57	30.5	92	276	300	SH250

尺寸参数 Size parameters

型号/规格 Model/Spec.	A	B	C	D	E	F	G	H	I	J	Z-K	L	
K4L	500	500	130	380	330.2	60	6	248	62	43	100	4-M24	32
	630	630	132	380	330.2	60	6	268	61	43	140	4-M24	36
	800	800	152	520	463.6	70	8	386	65	50	150	8-M24	38
	910	910	180	520	463.6	70	8	376	65	50	150	8-M24	38
	1000	1000	180	520	463.6	70	8	376	65	50	150	8-M24	38

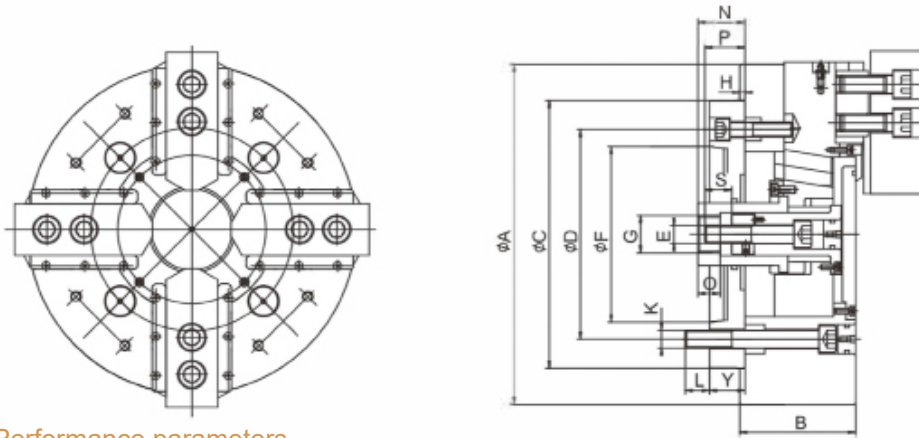
型号/规格 Model/Spec.	M	N		O		P		Q	R	S	T	U	梳齿	
		MAX	MIN	MAX	MIN	MAX	MIN							
K4L	500	200	108.5	99.7	88	25	37	4	170	25	115	M30	240	2.5*90°
	630	220	108.5	98.4	152	25	31	-7	205	25	125	M30	260	2.5*90°
	800	340	158	147.3	129	32	45	5	204	30	215	M36	380	3.0*60°
	910	340	158.5	143.2	136.5	32	45	-12	252	30	270	M36	380	3.0*60°
	1000	340	158.5	143.2	161.5	32	45	-12	252	30	305	M36	380	3.0*60°

K4SL | 四爪双动作动力卡盘

Four-jaw double-action power chuck

1. K4SL系列四爪双动作动力卡盘具有两套独立的自定心机构。本产品是液压2+2爪动力卡盘，由双杆回转油缸驱动，2、4爪一起动作，连接油缸小活塞，进行初始定位；1、3卡爪一起动作，连接油缸大活塞，进行最终定位加紧。适用于加工正方形，长方形等零件，并可根据要求配各种形式的法兰。

1. K4SL series four-jaw double-action power chuck has two independent self-centering mechanisms. This product is a hydraulic 2+2 jaw power chuck, driven by a double-rod rotary cylinder. The 2, 4 jaws act together to connect the small piston of the oil cylinder for initial positioning; the 1, 3 jaws act together to connect the large piston of the oil cylinder for the final Positioning stepped up. Suitable for processing square, rectangular and other parts, and can be equipped with various forms of flanges according to requirements.



性能参数 Performance parameters

型号/规格	楔心套行程 (mm)	卡爪行程 (直径mm)	许用拉力 (KN)		最大夹紧力 (KN)		最高转速 (r. p. m)	夹紧范围 (mm)
			1+3爪	2+4爪	1+3爪	2+4爪		
K4SL-10	22	10	34	25	95	60	2000	(34-254)
K4SL-12	23	10.6	34	25	95	60	1800	(50-304)
K4SL-15	33	14	40	30	120	80	1500	(60-381)
K4SL-18	33	14	40	30	120	80	1200	(60-450)
K4SL-21	33	17.6	50	35	150	100	1000	(120-530)
K4SL-24	35	18.8	50	35	150	100	800	(150-610)
K4SL-32	35	18.8	80	60	180	120	550	(200-810)
K4SL-40	50	26.8	150	100	280	180	400	(240-1000)
K4SL-50	50	26.8	150	100	280	180	300	(300-1250)

注：表中（）数值只适用于软卡爪卡盘，15寸以上规格卡盘可做防尘防水结构。

Note: The value () in the table is only applicable to soft jaw chucks, and chucks with specifications above 15 inches can be used as dust-proof and waterproof structure.

尺寸参数 Size parameters

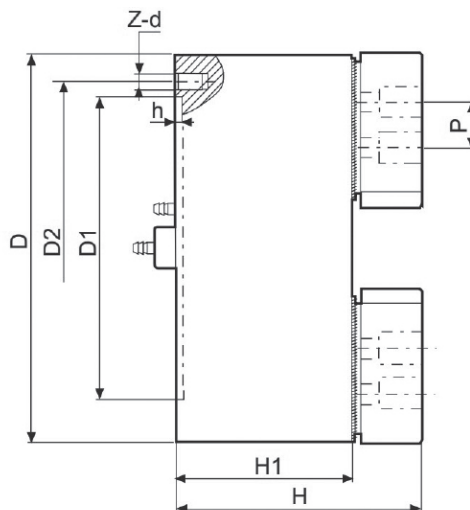
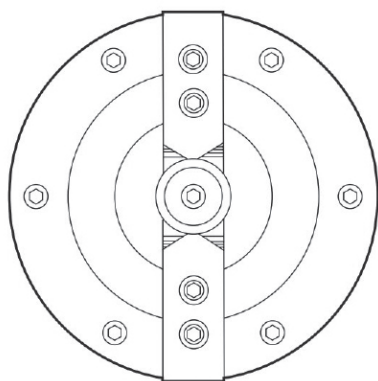
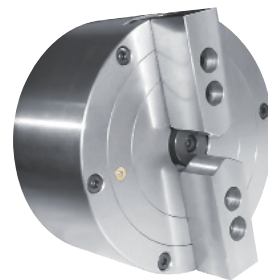
型号/规格	A	B	C (H6)	D	E	F	G	H	K	L	O	S	Y	N		P	
														MAX	MIN	MAX	MIN
K4SL-10	254	110	220	171.4	M16	139.719	M42×1.5	5	4-M16	24	25	25	28	72	50	52.5	30.5
K4SL-12	304	120	220	171.4	M20	139.719	M42×1.5	6	4-M16	24	25	25	28	73	50	54	31
K4SL-15	381	130	300	235	M20	196.869	M42×1.5	6	4-M20	27	25	30	40	86	53	78	45
K4SL-18	450	130	300	235	M20	196.869	M42×1.5	6	4-M20	27	25	30	40	86	53	78	45
K4SL-21	530	135	380	330.2	M24	285.775	M50×2	6	4-M24	31	32	37	50	64	31	33	0
K4SL-24	610	140	380	330.2	M24	285.775	M50×2	6	4-M24	31	32	37	50	66	31	33	-2
K4SL-32	810	145	380	330.2	M24	285.775	M50×2	6	8-M24	31	32	37	50	66	31	33	-2
K4SL-40	1000	180	520	436.6	M30	—	M65×2	8	8-M24	34	35	45	50	85	35	60	10
K4SL-50	1250	200	520	436.6	M30	—	M65×2	8	8-M24	36	35	45	50	85	35	60	10

QS2 | 二爪中实气动卡盘(内置式)

2 jaw solid pneumatic chuck (built-in)

1. 该系列卡盘为内置气缸式结构，采用高级合金钢材料，所有配合面均经表面硬化处理，以提高精度和耐用性。
2. 不含连接法兰，D型连接。

1. This series of chuck comes with built-in cylinder structure, adopt the advanced alloy steel material, all with the surface by surface hardening treatment, in order to improve the accuracy and durability.
2. Without flange connection, D connection.



性能参数 Performance parameters

型号/规格 Model/Spec.	爪行程(直径) Jaw stroke (diameter) (mm)	最大夹紧力 Maximum static clamping force (Kgf)	最大静态撑紧力 Maximum static holding force (Kgf)	许用压力 Permissible pressure (Mpa)	极限转速 Limit speed (r/min)	夹紧范围 Clamping range	撑紧范围 Holding range	净重 Net weight (kg)
QS2-04	3.2	2040	1170	0.4-0.8	4500	2-120	15-120	4.8
QS2-05	3.7	2856	1836	0.4-0.8	4000	3-140	15-140	7.6
QS2-06	4.2	4896	2652	0.4-0.8	3600	4-180	20-180	13
QS2-08	5	7140	4284	0.4-0.8	3300	5-215	20-240	21
QS2-10	6.5	9282	6120	0.4-0.8	3000	10-260	30-280	33
QS2-12	8.5	14076	9486	0.4-0.8	2500	10-350	40-360	66.5
QS2-15	12	19788	15096	0.4-0.8	2000	20-420	60-400	112

尺寸参数 Size parameters

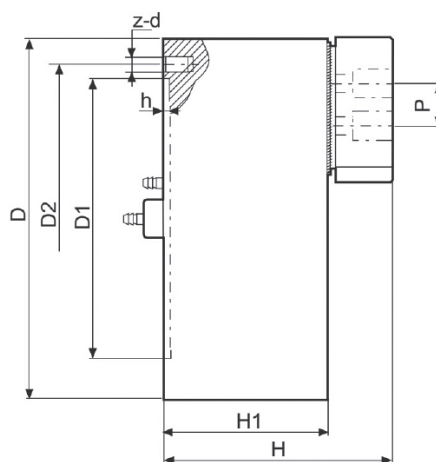
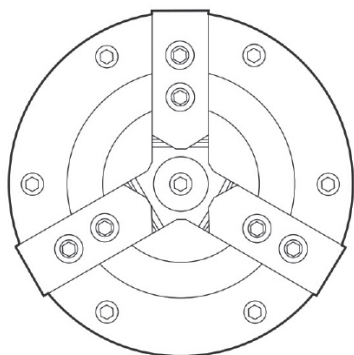
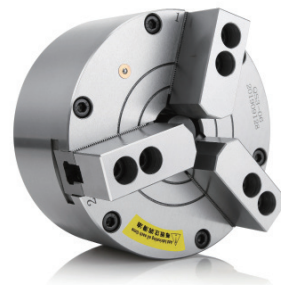
型号/规格 Model/Spec.	D	D1	D2	H	H1	h	p	z-d
QS2-04	115	72	100	96	72	3	16	3-M8
QS2-05	135	95	108	118	85	4	18	3-M8
QS2-06	172	130	142	130	93	4	20	3-M8
QS2-08	208	165	180	136	98	5	25	3-M10
QS2-10	252	206	226	143	100	5	30	3-M12
QS2-12	322	270	290	160	115	6	30	6-M12
QS2-15	400	340	368	168	118	6	43	6-M16

QS3 | 三爪中实气动卡盘(内置式)

3 jaw solid pneumatic chuck (built-in)

1. 该系列卡盘为内置气缸结构，采用高级合金钢材料，表面均经表面硬化处理，以提高精度和耐用性。
2. 无法兰连接，D连接。

1. This series of chuck comes with built-in cylinder structure, adopt the advanced alloy steel material, all with the surface by surface hardening treatment, in order to improve the accuracy and durability.
2. Without flange connection, D connection.



性能参数 Performance parameters

型号/规格 Model/Spec.	爪行程(直径) Jaw stroke (diameter) (mm)	最大夹紧力 Maximum static clamping force KN (Kgf)	最大静态撑紧力 Maximum static holding force KN (Kgf)	许用压力 Permissible pressure (Mpa)	极限转速 Limit speed (r/min)	夹紧范围 Clamping range	撑紧范围 Holding range	净重 Net weight (kg)
QS3-04	3.2	2040	1170	0.4-0.8	4500	2-120	15-120	5.2
QS3-05	3.7	2850	1830	0.4-0.8	4000	3-140	15-140	8
QS3-06	4.2	4890	2650	0.4-0.8	3600	4-180	18-180	14
QS3-08	5	7140	4280	0.4-0.8	3300	5-220	20-240	23
QS3-10	6.5	9280	6120	0.4-0.8	3000	10-260	30-280	35
QS3-12	8.5	14070	9480	0.4-0.8	2500	20-350	40-360	70
QS3-15	12	19780	15000	0.4-0.8	2000	30-420	60-440	118

尺寸参数 Size parameters

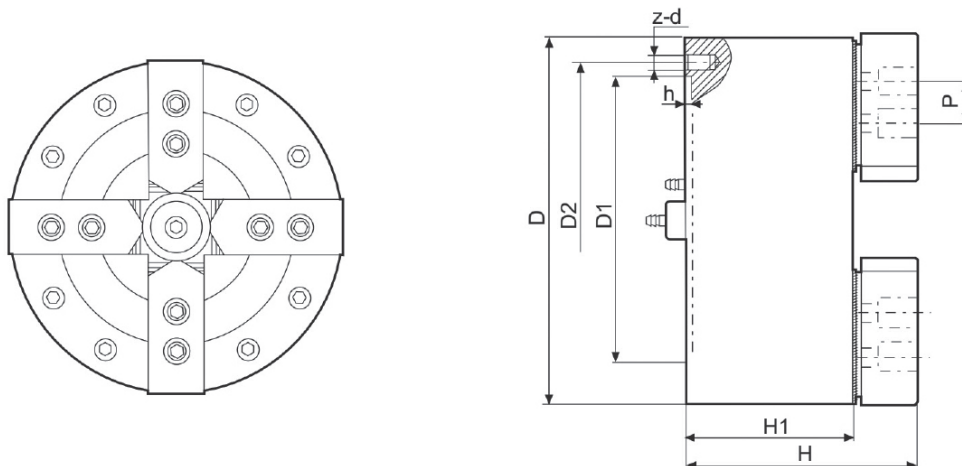
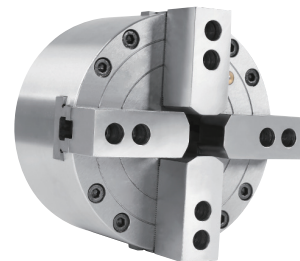
型号/规格 Model/Spec.	D	D1	D2	H	H1	h	p	z-d
QS2-04	115	72	100	106	81	3	16	3-M8
QS2-05	145	95	108	118	85	4	18	3-M8
QS2-06	180	130	142	130	93	4	20	3-M8
QS2-08	208	165	180	136	100	5	25	3-M10
QS2-10	252	206	226	143	102	5	30	3-M12
QS2-12	322	270	290	160	115	6	30	6-M12
QS2-15	400	340	368	168	118	6	43	6-M16

QS4 | 四爪中实气动卡盘(内置式)

4 jaw solid pneumatic chuck (built-in)

1. 该系列卡盘为内置气缸式结构，采用高级合金钢材质，所有配合面均经表面硬化处理，以提高精度和耐久性。
2. 不含连接法兰，D型连接。

1. This series of chuck comes with built-in cylinder structure, adopt the advanced alloy steel material, all with the surface by surface hardening treatment, in order to improve the accuracy and durability.
2. Without flange connection, D connection.



性能参数 Performance parameters

型号/规格 Model/Spec.	爪行程(直径) Jaw stroke (diameter) (mm)	最大夹紧力 Maximum static clamping force (Kgf)	最大静态撑紧力 Maximum static holding force (Kgf)	许用压力 Permissible pressure (Mpa)	极限转速 Limit speed (r/min)	夹紧范围 Clamping range	撑紧范围 Holding range	净重 Net weight (kg)
QS4-05	3.7	2856	1836	0.4-0.8	4000	10-140	25-140	12
QS4-06	4.2	4896	2652	0.4-0.8	3600	15-180	30-180	14
QS4-08	5	7140	4284	0.4-0.8	3300	20-220	40-240	24
QS4-10	6.5	9282	6120	0.4-0.8	3000	30-260	50-280	37
QS4-12	8.5	14076	9486	0.4-0.8	2500	40-350	60-360	72
QS4-15	12	19788	15096	0.4-0.8	2000	60-420	80-440	122

尺寸参数 Size parameters

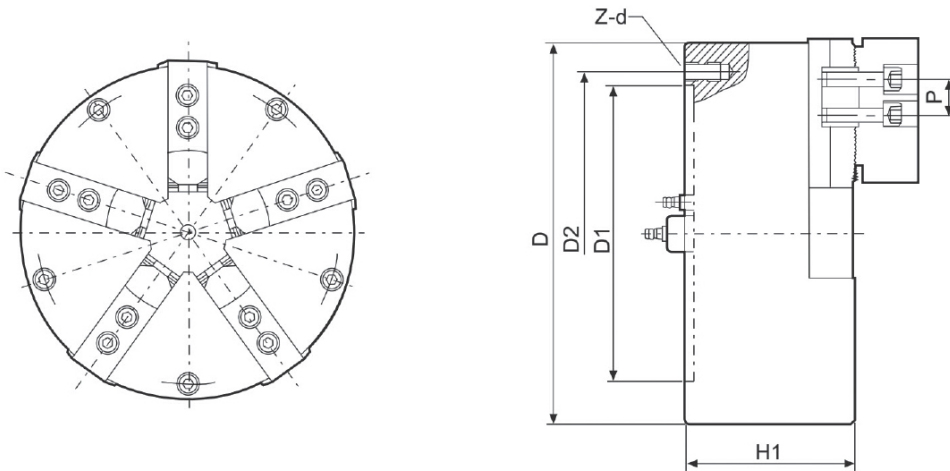
型号/规格 Model/Spec.	D	D1	D2	H	H1	h	p	Z-d
QS4-05	135	95	108	118	85	4	18	3-M8
QS4-06	180	130	142	130	93	4	20	3-M8
QS4-08	208	165	180	136	98	5	25	3-M10
QS4-10	252	206	226	143	100	5	30	3-M12
QS4-12	322	270	290	160	115	6	30	6-M12
QS4-15	400	340	368	168	118	6	43	6-M16

QS5 | 五爪中实气动卡盘(内置式)

5-jaw pneumatic chuck (built-in)

1. 该系列卡盘为内置气缸式结构，采用高级合金钢材质，所有配合面均经表面硬化处理，以提高精度和耐久性。
2. 不含连接法兰，D型连接。

1. This series of chuck comes with built-in cylinder structure, adopt the advanced alloy steel material, all with the surface by surface hardening treatment, in order to improve the accuracy and durability.
2. Without flange connection, D connection.



性能参数 Performance parameters

型号/规格 Model/Spec.	爪行程(直径) Jaw stroke (diameter) (mm)	最大夹紧力 Maximum static clamping force (Kgf)	最大静态撑紧力 Maximum static holding force (Kgf)	许用压力 Permissible pressure (Mpa)	极限转速 Limit speed (r/min)	夹紧范围 Clamping range	撑紧范围 Holding range	净重 Net weight (kg)
QS5-08	5	7140	4284	0.4-0.8	3300	20-220	40-240	24
QS5-10	5.7	9282	6120	0.4-0.8	3000	30-260	50-280	37
QS5-12	8.5	14076	9486	0.4-0.8	2500	40-350	60-360	72
QS5-15	10	19788	15096	0.4-0.8	2000	60-420	80-440	122

尺寸参数 Size parameters

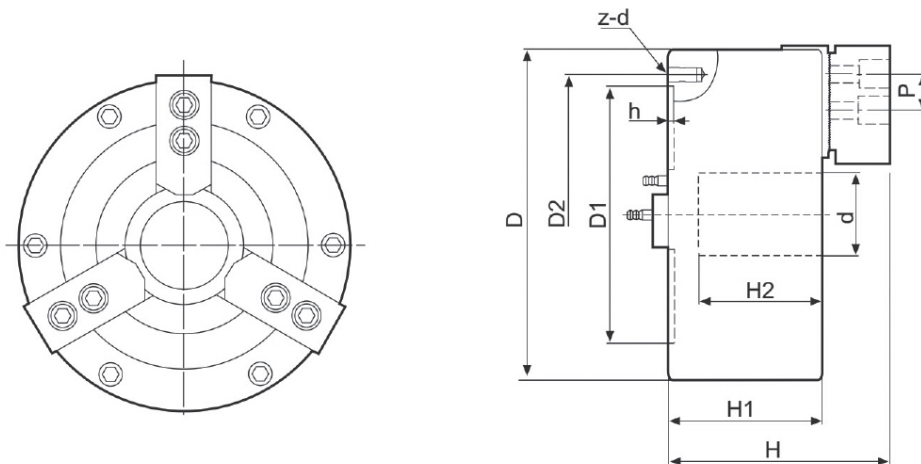
型号/规格 Model/Spec.	D	D1	D2	H	H1	h	p	Z-d
QS5-08	212	165	180	136	98	5	25	3-M10
QS5-10	252	206	226	143	100	5	30	3-M12
QS5-12	325	270	290	160	115	6	30	6-M12
QS5-15	400	340	368	168	118	6	43	6-M16

QB3 | 三爪半通孔气动卡盘

3-jaw semi-through hole pneumatic chuck

1. 该系列卡盘为内置气缸式结构，采用高级合金钢材质，所有配合面均经表面硬化处理，以提高精度和耐久性。
2. 不含连接法兰，D型连接。

1. This series of chuck comes with built-in cylinder structure, adopt the advanced alloy steel material, all with the surface by surface hardening treatment, in order to improve the accuracy and durability.
2. Without flange connection, D connection.



性能参数 Performance parameters

型号/规格 Model/Spec.	爪行程(直径) Jaw stroke (diameter) (mm)	最大夹紧力 Maximum static clamping force (KgF)	最大静态撑紧力 Maximum static holding force (KgF)	许用压力 Permissible pressure (Mpa)	极限转速 Limit speed (r/min)	夹紧范围 Clamping range	撑紧范围 Holding range	净重 Net weight (kg)
QB3-05	3.7	2549	1630	0.4-0.8	4000	3-140	15-140	8
QB3-06	4.2	4314	2397	0.4-0.8	3600	2-170	20-180	15
QB3-08	5	3675	3630	0.4-0.8	3200	5-210	20-240	23
QB3-10	6.5	7650	4029	0.4-0.8	2800	10-260	30-280	32
QB3-12	8.5	13056	7446	0.4-0.8	2300	10-350	40-360	76
QB3-15	12	17850	9996	0.4-0.8	1500	15-420	50-430	140

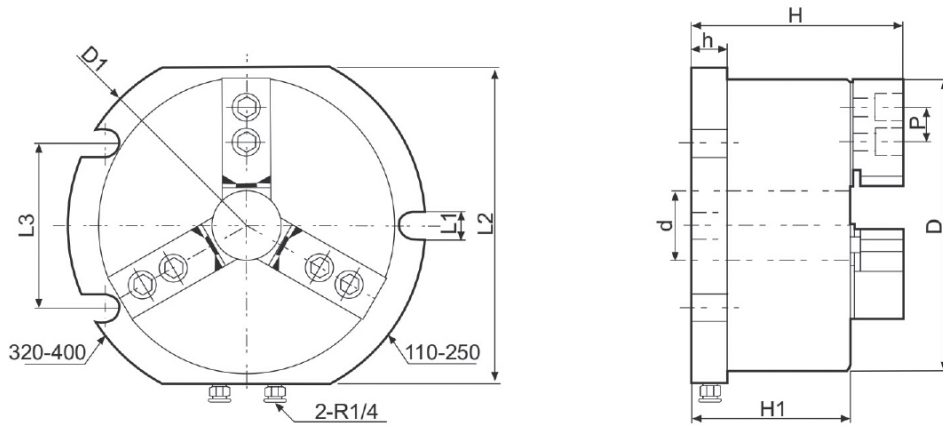
尺寸参数 Size parameters

型号/规格 Model/Spec.	D	D1	D2	d	H	H1	H2	h	p	Z-d
QB3-05	135	95	108	26	103	85	68	4	16	3-M8
QB3-06	172	130	142	37	127	96	75	4	20	3-M8
QB3-08	212	165	180	52	138	100	79	5	25	3-M10
QB3-10	252	206	226	66	144	102	81	5	30	3-M12
QB3-12	325	270	290	80	175	123	103	6	32	6-M12
QB3-15	400	340	368	120	210	138	115	6	43	6-M16

QK3-L | 三爪立式中空气动卡盘

Vertical through-hole pneumatic chuck

1. 专利产品，立式带底板。
 2. 内置气缸结构，安装方便。
 3. 该卡盘适用于加工中心、钻床、铣床。
 4. 可以提供二爪、四爪等形式。
1. Patent product, vertical type with baseboard.
 2. Built-in cylinder structure, convenient for installation.
 3. This chuck is applicable for machining center, driller and miller
 4. Two-claw and four-claw are available.



性能参数 Performance parameters

型号/规格 Model/Spec.	爪行程 (直径) Jaw stroke (diameter) (mm)	最大夹紧力 Maximum static clamping force (Kgf)	最大静态撑紧力 Maximum static holding force (Kgf)	许用压力 Permissible pressure (Mpa)	夹紧范围 Clamping range	撑紧范围 Holding range	净重 Net weight (kg)
QK3-04L	3.2	1830	1120	0.4-0.8	3-115	15-120	8
QK3-05L	3.7	1630	1020	0.4-0.8	5-130	15-140	11
QK3-06L	4.2	3060	2240	0.4-0.8	5-170	20-180	18
QK3-08L	5	4890	3670	0.4-0.8	10-210	25-230	28
QK3-10L	6.5	6830	5100	0.4-0.8	20-250	30-260	40
QK3-12L	8.5	10910	8160	0.4-0.8	30-320	40-340	75
QK3-15L	12	15300	11730	0.4-0.8	40-400	60-420	120

尺寸参数 Size parameters

型号/规格Model/Spec.	D	D1	d	L1	L2	L3	H	H1	h	p
QK3-04L	115	160	/	2/15	120	/	116	92	20	14
QK3-05L	135	175	20	2/15	140	/	120	97	26	14
QK3-06L	180	218	35	2/17	180	/	142	109	26	20
QK3-08L	208	265	40	2/17	220	/	155	115	26	25
QK3-10L	252	310	60	2/20	260	/	157	115	26	30
QK3-12L	322	400	80	4/20	340	150	185	133	30	30
QK3-15L	400	480	100	4/20	430	150	220	148	35	43

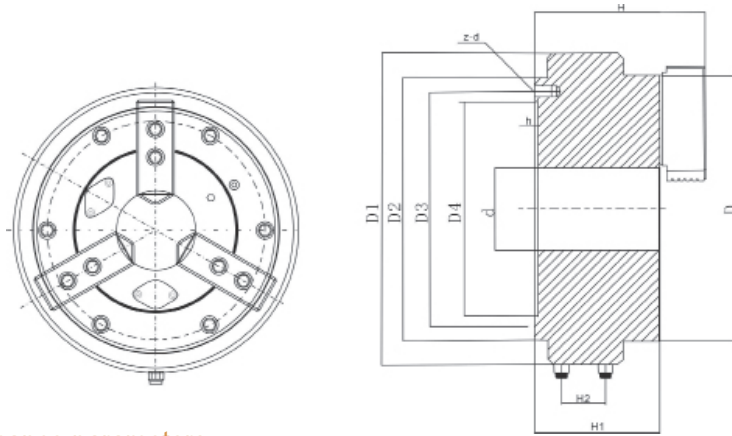
QZ3 | 三爪前置式气动卡盘

Front-load pneumatic chuck

1. 该卡盘与主轴连接方式符合国家标准（短圆柱连接形式），用户不需改变机床结构，只需配备与机床、卡盘相符的连接法兰即可安装，且安装十分方便。
2. 卡盘体即为气缸，内置活塞、逆止阀，具有超长时间的保压功能（长达24小时以上），通过侧面旋转进气，实现夹紧与松开动作，断开气源，方可工作。
3. 该卡盘具有重量轻、孔径大、行程大、转速高等优势，适用于普通车床、管螺纹机床及焊接设备的配置。



1. The connecting between the chuck and main shaft complies with the national standard (short cylinder connecting mode), so users only need to prepare right connection flange compatible with the machine tool and chuck instead of changing the machine tool structure during installation.
2. The whole installation process is quite easy. The chuck body is the cylinder, with piston and inverted valve inside to achieve super-long time pressure-keeping function (more than 24 hours). The clamping and losing movement is achieved by rotary air inlet at the side. The machine will not work before cutting off the gas supply.
3. The chuck boasts advantages of less weight, big hole diameter, high stroke and high rotating speed, which is applicable for lathe, pipe thread machine tool and welding equipments.



性能参数 Performance parameters

规格 Specification	爪行程t(直径) Jaw stroke t (Diameter)	最大夹紧力 KN Max. gripping force (KN)	许用压力 Map Allowable pressure (Map)	极限转速r/min Limited rotating speed (r/min)	夹紧范围 Clamping range	撑紧范围 Bracing range	净重kg Net weight (kg)	改前穿 Change
QZ3-03	3.2	3.2	0.4~0.9	4200	1.5~80	20~90	4.2	否
QZ3-05	3.7	15	0.4~0.9	2850	2~130	20~140	14.2	否
QZ3-06	4.2	28	0.4~0.9	2300	2~170	20~180	24.2	否
QZ3-08	4.7	41.7	0.4~0.9	2000	5~210	20~240	35.3	是
QZ3-10	5.4	58.2	0.4~0.9	1600	10~260	30~280	48.5	是
QZ3-12	8.5	86.8	0.4~0.9	1200	60~350	40~360	95.8	是
QZ3-15	12.7	82	0.4~0.9	750	10~410	50~410	164	是
QZ3-20	16.4	128	0.4~0.9	650	20~510	50~510	274	是
QZ3-24	16.4	191	0.4~0.9	500	20~650	80~610	445	是

尺寸参数 Size parameters

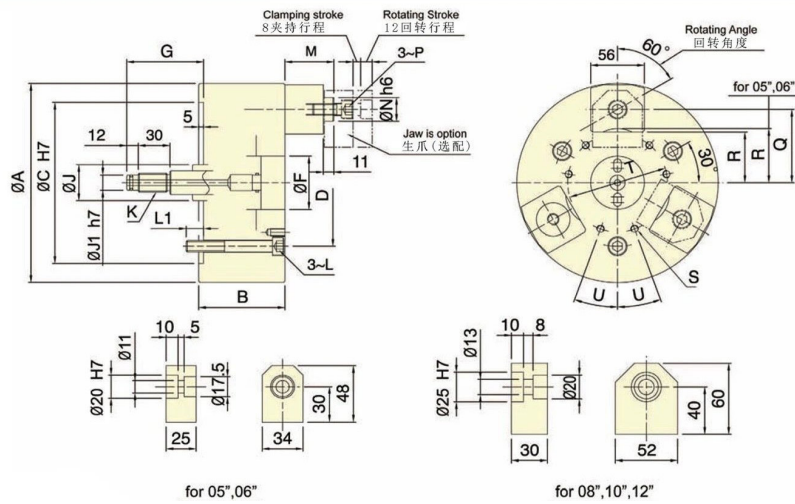
规格 Specification	D	D1	D2	D3	D4	d	H	H1	H2	h	z-d
QZ3-03	88	110	82	66	55	12	106	85	36	3	3-M6
QZ3-05	135	175	131	108	95	25	133	102	42	5	3-M8
QZ3-06	175	219	171	142	130	35	143	107	42	5	3-M8
QZ3-08	214	258	210	180	165	52	155	115	42	5	3-M10
QZ3-10	256	300	252	226	206	80	166	122	42	5	3-M12
QZ3-12	325	373	321	290	270	130	213	159	45	5	6-M12
QZ3-15	400	448	396	368	340	170	260	194	54	6	6-M16
QZ3-20	500	520	500	465	440	225	314	241	52	6	6-M16
QZ3-24	630	630	630	595	560	300	341	269	23	8	6-M16

3J 指形动力卡盘

FINGER POWER CHUCK

1. 探工件端面夹持，防止工件夹持变形，适合薄壁工件加工。
2. 夹持补偿机构，可夹持不规则端面之工件。

1. Gripping at the end face and preventing deformation of workpiece Suitable for thin wall workpiece processing
2. The gripping compensating mechanism can grasp the irregular surface workpieces well



性能参数 Performance parameters

型号 Model	回转行程 Rotating Stroke mm	夹持行程 Claming Stroke mm	爪补偿量 Jaw stroke mm	夹持直径 Clamping diameter mm		容许油缸推力 Max. D.B. pull kN (kgf)	最大夹持力 Max. Clamping force kN (kgf)	最高转速 Max. speed r.p.m	I Moment of inertia mm	重量 Weight kg	适用回转 油缸 Matching cyl	最大使用压力 Max. pressure Mpa (kgf/cm ²)
				最大max	最小min							
3J-05	12	8	2	53	25	7.5 (765)	6.0 (612)	4000	0.02	11	SH-100	1.0 (10)
3J-06	12	8	2	79	55	9.0 (918)	7.5 (765)	4000	0.04	12	SH-100	1.2 (12)
3J-08	12	8	2	106	75	18.0 (1835)	16.5 (1680)	3500	0.13	23	SH-100	2.5 (25)
3J-10	12	8	2.5	150	119	18.0 (1835)	16.5 (1680)	3500	0.3	33	SH-100	2.5 (25)
3J-12	12	8	2.5	200	169	18.0 (1835)	16.5 (1680)	3000	0.56	44	SH-100	2.5 (25)

尺寸参数 Size parameters

型号/规格 Model/Spec.	A	B	C (HG)	D	F	G max	G min	J	J1	k	L	L1	Mmax	Mmin	N	P	Q	R	S	T	U
3J-05	135	86	110	82.6	40	75	55	25	9	M12x1.75	M10	15	56	36	20	M10	42.5	27	3-M6	50	-
3J-06	165	86	140	104.8	45	75	55	28	12	M16x2	M10	15	56	36	20	M10	57.5	40	3-M8	64	-
3J-08	210	90	170	133.4	56	80	60	38	16	M20x2.5	M12	18	71	51	25	M12	77.5	53.5	6-M8	104	20°
3J-10	254	95	220	171.4	56	75	55	38	16	M20x2.5	M16	24	71	51	25	M12	99.5	75.5	6-M8	140	20°
3J-12	304	95	220	171.4	56	75	55	38	16	M20x2.5	M16	24	71	51	25	M12	124.5	100.5	6-M8	190	20°

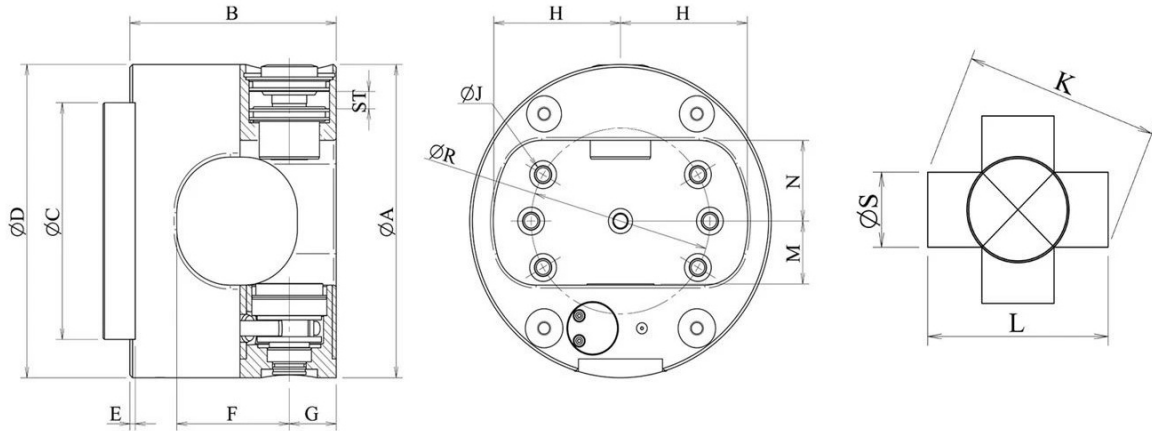
SGA | 全自动液压分度卡盘

Fully automatic hydraulic indexing chuck



1. 一次夹持就可以进行多面加工。
2. 机械主轴在回转中也可以自动转换角度。
3. 可以分割成3X120, 4X90, 6X60, 8X45等常规等分角度。
4. 含有到位检测信号, 防止在转位分度不到位情况下确保安全性。

1. Multi-face machining can be done with one clamping.
2. The mechanical spindle can also automatically change the angle during the rotation.
3. Can be divided into 3X120, 4X90, 6X60, 8X45 and other conventional equal angles.
4. Contains in-position detection signal to ensure safety when the index index is not in place.



性能参数 Performance parameters

型号 Model	最大夹持力 Max. Clamping force kN (kgf)	主轴通孔 Spindle hole mm	最高转速 r. p. m mm	重量 Weight kg	适用旋转分配器 Matching cyl.	最大使用压力 Max. pressure Mpa (kgf/cm ²)	最大工件尺寸 S mm	L mm	K mm
SGA-168	813	>52	2800	16	JR250	4.0 (40)	40	120	140
SGA-185	813	>52	3000	19	JR250	4.0 (40)	45	140	145
SGA-225	1270	>52	2500	26	JR250	4.0 (40)	65	160	165
SGA-280	2550	>60	2200	55	JR500	4.0 (41)	80	220	250
SGA-315	2550	>60	1800	71	JR500	4.0 (42)	110	250	260
SGA-350	2550	>60	1600	91	JR500	4.0 (43)	135	280	270
SGA-400	2550	>60	1400	145	JR500	4.0 (44)	170	320	280

尺寸参数 Size parameters

Model	A	B	C (H6)	D	E	F	G	H	J	M	N	ST	R
SGA-168	168	140	140	178	5	72	30	68	M10	34	38	9.5	104.8
SGA-185	185	143	140	198	5	75	30	77	M10	32	42	10.5	104.8
SGA-225	225	154	170	225	5	84	35	95	M12	46	58	11.5	133.4
SGA-280	280	213	220	280	5	126	48	125	M16	57	67	16.8	171.4
SGA-315	315	232	220	315	5	136	50	136	M16	76	85	19.4	171.4
SGA-350	350	240	300	350	6	136	50	145	M20	84	102	19.4	235
SGA-400	400	259	300	400	6	140	60	165	M20	100	114	30	235

油缸和气缸 hydraulic cylinder and pneumatic cylinder

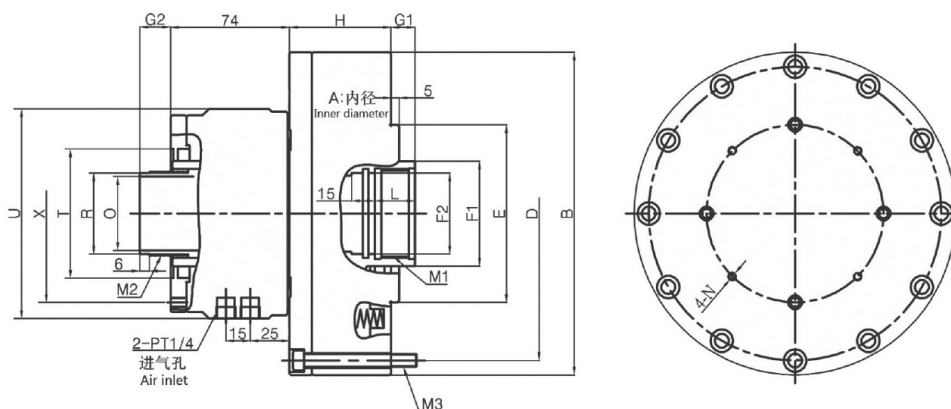
RQ | 中空单活塞回转气缸

The hollow single piston rotary cylinder



1. 大通孔设计，通孔贯穿，可加工长轴类零件。
2. 轻量型，高转速，阀体经特殊设计，能使压缩空气的消耗量节减，充分发挥高效经济效益。
3. 内部零部件皆采用进口原件，运转平衡，高寿命。
4. 特大通孔可根据客户要求定制，使用时请注入微量油雾。

1. The structure is through-hole, available for long shaft workpiece processing.
2. Lightweight, high speed, valve body by the special design, can make the compressed air consumption saving.
3. Internal components are using inbound ingredients, running balance, long service life.
4. Through-hole can be customized according to customer's requirement. Please inject small amount of oil mist when using.



性能参数 Performance parameters

规格型号 Model/Spec.	活塞面积 Piston area (cm ²)		行程 Stroke (mm)	最高回转数 Highest turnover number min-1 (rpm)	最高使用压力 Maximum working pressure MPa (kgf/cm ²)	最大推拉力 Max. pull force (kgf/KN)		GD (kg. m ²)	重量 Weight (kg)
	压侧 Press side	拉侧 Pull side				推侧 Push side	拉侧 Pull side		
RQ-130	116.8	116.8	15	5000	0.8 (8)	933 (9.14)	933 (9.14)	0.04	8.4
RQ-150	153	143.5	15	4500	0.8 (8)	1224 (12)	1148 (11.25)	0.06	9.5
RQ-170	198.7	188.5	15	4500	0.8 (8)	1589.6 (15.58)	1508 (14.78)	0.09	11.6

尺寸参数 Size parameters

规格型号 Model/Spec.	A	B	C	E (h7)	F1	F2 (H8)	G1 max.	G1 min.	G2 min.	G2 min.	H
RQ-130	130	160	143	110	45	36.5	15	0	35	20	60
RQ-150	150	180	163	110	65	50	15	0	35	20	63
RQ-170	170	200	182	110	65	50	15	0	35	20	63

规格型号 Model/Spec.	L	M1	M2	M3	O (H7)	N	R	T	U	X
RQ-130	25	M38×1.5	M44×1.5	6-M8×65	36	M5×10	42	74	108	90
RQ-150	25	M55×2	M52×1.5	6-M8×70	46	M6×10	50	86	130	110
RQ-170	25	M60×2	M58×1.5	6-M8×70	52	M6×10	56	86	130	110

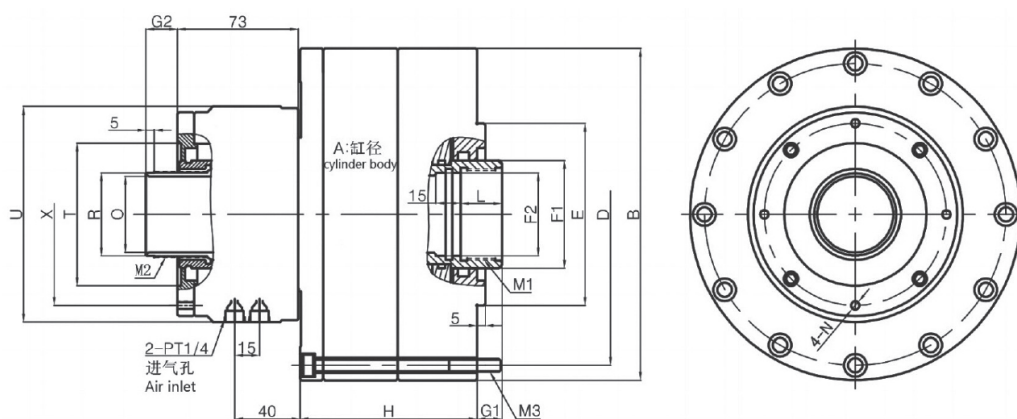
RQ-B | 中空双活塞回转气缸

The hollow double piston rotary cylinder

1. 大通孔，双活塞设计，拉力能加大1倍。通孔贯穿可加工长轴类零件。
2. 轻量型，高转速，阀体经特殊设计，能使压缩空气的消耗量节减，充分发挥高效经济效益。
3. 内部零部件皆采用进口原件，运动平衡，高寿命。
4. 特大通孔可根据客户需求定制。
5. 使用时请注入微量油雾。



1. The structure is through-hole, double piston design, pulling force increasing, available for long shaft workpiece processing.
2. Lightweight, high speed, valve body by the special design, can make the compressed air consumption saving.
3. Internal components are using inbound ingredients, running balance, long service life.
4. Through-hole can be customized according to customer's requirement.
5. Please inject small amount of oil mist when using.



性能参数 Performance parameters

规格型号 Model/Spec.	活塞面积 Piston area (cm ²)		行程 Stroke (mm)	最高回转数 Highest turnover number min-1 (rpm)	最高使用压力 Maximum working pressure MPa (kgf/cm ²)	最大推拉力 Max. pull force (kgf/KN)		GD ² (kg·m ²)	重量 Weight (kg)
	压侧 Press side	拉侧 Pull side				推侧 Push side	拉侧 Pull side		
RQ-130B	223.03	219.3	15	5000	0.8(8)	1784.24(17.5)	1752.2(17.2)	0.04	9.2
RQ-150B	291.19	281.76	15	4500	0.8(8)	2329.53(22.83)	2254.1(22.09)	0.06	10.3
RQ-170B	381.52	371.3	15	4500	0.8(8)	3052.1(29.91)	2970.4(29.11)	0.09	12.5

尺寸参数 Size parameters

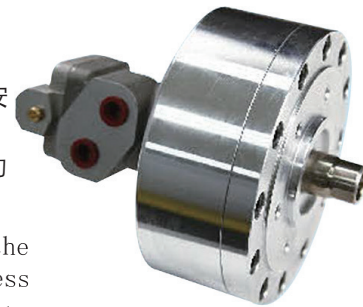
规格型号 Model/Spec.	A	B	D	E (h7)	F1	F2 (H8)	G1 max.	G1 min.	G2 min.	G2 min.	H
RQ-130B	130	160	143	110	50	36.5	15	0	38	23	105
RQ-150B	150	180	163	110	65	50	15	0	35	20	105
RQ-170B	170	200	182	110	70	55	15	0	34	19	107

规格型号 Model/Spec.	L	M1	M2	M3	O	N	R	T	U	X
RQ-130B	25	M38×1.5	M44×1.5	6-M8×115	36	M5×10	42	74	108	90
RQ-150B	25	M55×2	M52×1.5	6-M8×115	46	M6×10	50	86	130	110
RQ-170B	25	M60×2	M58×1.5	6-M8×120	52	M6×10	56	86	130	110

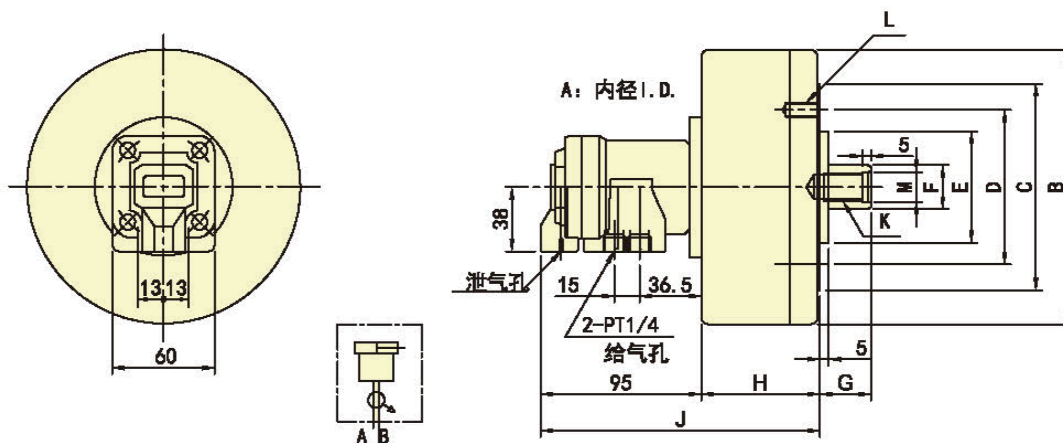
SQ | 高速中实单活塞回转气缸

The rotary cylinder with high speed single solid piston

1. 专利产品，是后拉式卡盘和筒夹头动力源。
2. 该回转气缸连接方式采用短圆柱形式，无需改动机床结构，只需机床尾部安装与连接凸台（D1）相符合的法兰即可。
3. 该产品采用铝合金材料，重量轻、转速高、动作快、不泄露，是后拉式动力卡盘和筒夹的理想动力源，也可用于其它装置的动力源。



Compact and lightweight: aluminum alloy made outer structure makes the weight lighter than the traditional rotary cylinders; meanwhile, the compactness and miniaturization enhance the stability and lower the burden of machines.



性能参数 Performance parameters

规格/型号 Model/Spec.	活塞面积 cm^2		行程 mm	“极限转速 Limit speed (r/min)”	“最高使用压力 Mpa (kgf/cm 2)”	GD 2 kg·m 2	“重量 kg”
	压侧	拉侧					
SQ110	77	74.4	15	6000	0.8 (8)	0.03	4.5
SQ130	131.2	124.7	15	5000		0.05	5.2
SQ160	225.4	219	20	5000		0.18	8.5
SQ200	378.6	369.3	25	4000		0.36	14.5

尺寸参数 Size parameters

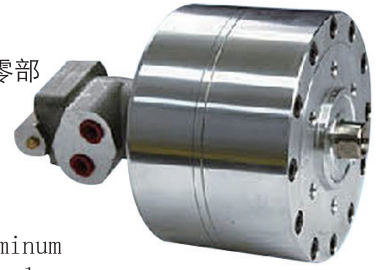
规格/型号	A	B	C	D	“E H7”	F	G		H	J	K	L	“M H8”	z-d
							Max	Min						
SQ110	100	130	-	80	60	22	50	35	65	160	M12×1.75	6-M8×16	13	6-M8
SQ130	130	160	120	90	65	25	45	30	70	165	M16×2.0	6-M8×16	17	6-M8
SQ160	170	200	140	100	80	25	45	25	85	180	M16×2.0	6-M10×18	17	6-M10
SQ200	220	255	170	130	110	30	50	25	91	186	M20×2.5	6-M12×20	21	6-M12

SQ-B

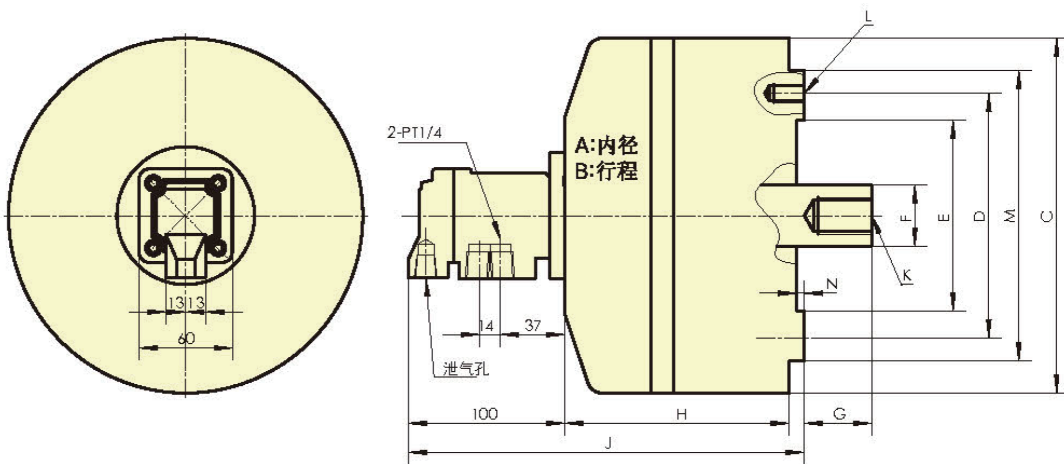
高速中实双活塞回转气缸

The rotary cylinder with high speed double solid piston

1. 双活塞设计，拉力能加大1倍。
2. 轻量型，高速型，运动平衡，回转阀体采用特殊铝合金制造而成，内部零部件采用进口原件，高寿命，低惯量。
3. 使用时请注入微量油雾。
4. 可根据客户需求定制。



1. Double piston design, pulling force increasing.
2. Lightweight, highspeed, runningbalance, rotaryvalvespecialaluminum alloy, internalcomponentsareusinginbound ingredients, longservice life, low inertia.
3. Please inject small amount of oil mist when using.



性能参数 Performance parameters

规格/型号 Model/Spec.	活塞面积cm ²		行程mm	“极限转速 Limit speed (r/min)”	“最高使用压力 Mpa (kgf/cm ²)”	“重量 kg”
	押侧	拉侧				
SQ-130B	251.2	247.9	12	4000	8 (0.8)	8
SQ-150B	339	332	20	4000	8 (0.8)	9.3
SQ-160B	380.8	369.7	25	4000	0.8 (8)	12
SQ-200B	606.8	595.8	30	3500	0.8 (8)	17
SQ-250B	960	949	35	3000	0.8 (8)	26

尺寸参数 Size parameters

规格/型号 Model/Spec.	A	B	C	D	“E H7”	F	G		H	J	K	L	N
							Max	Min					
SQ-130B	130	12	90	90	65	25	32	20	113	221	M16×25	M10×18	5
SQ-150B	150	20	125	125	100	30	31	11	132.5	232.5	M20×30	M10×18	5
SQ-160B	160	25	195	125	100	40	40	15	135	243	M20×25	6-M10×20	5
SQ-200B	200	30	232	160	125	40	44	14	147	255	M22×35	6-M12×20	5
SQ-250B	250	35	285	200	160	40	42	7	158	266	M20×35	12-M12×20	5

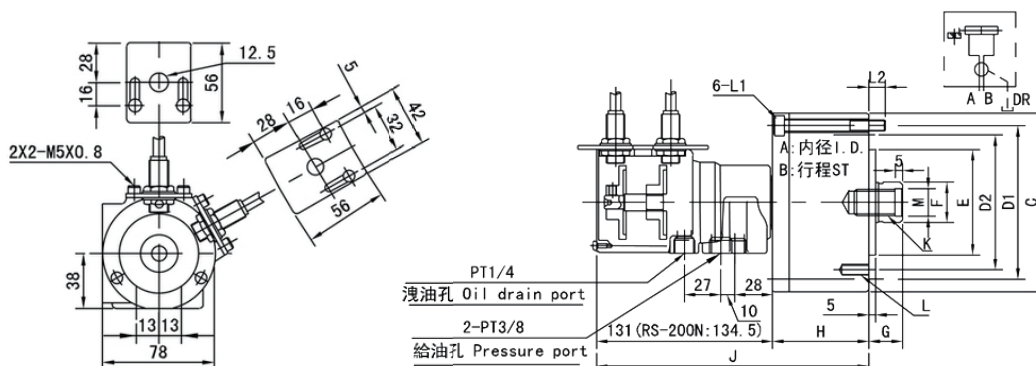
SH-N | 中实行程检出回转油缸

Mid-stroke detection rotary cylinder



1. 短行，高速，行程控制型回转液压缸。
2. 感应式进接开关，行程调整容易，可确认油压正确动作。
3. 安装时可由后端所固之。
4. 泄油孔配管务必单独接回油压槽，以避免产生背压。

1. Short travel, high speed, stroke control type rotary hydraulic cylinder.
2. The inductive feed-in switch is easy to adjust the stroke, and can confirm the correct operation of the oil pressure
3. It can be fixed by the rear end during installation.
4. The piping of the drain hole must be connected separately to the oil pressure tank to avoid back pressure.



性能参数 Performance parameters

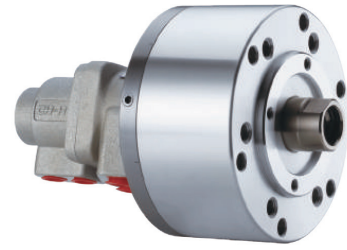
规格	活塞面积cm ²		行程mm	“最高回转转速 min-1 (r. p. m.)”	“最高使用压力MPA (kgf/cm ²)”	GD ² kg ² · m ²	重量kg
	押侧	拉侧					
SH-75N	43.0	37.1	15	6000	4.0 (40)	0.01	3.3
SH-100N	77.4	71.5	20			0.04	4.8
SH-125N	121.6	113.1	25	0.05		7.3	
SH-150N	175.8	160.8	30	0.16		10.6	
SH-200N	313.0	290.4	35	0.29		15.9	

尺寸参数 Size parameters

规格型号 Model/Spec.	A	B	C	D1	D2	E h7	F	G		H	J	K	L	L1	L2	M H8
								MAX	MIN							
SH-75N	75	15	107	90		65	30	45	30	57	188	M20×35	6-M8×16	M8×60	12	21
SH-100N	100	20	132	115	100	80	30	45	25	72	203	M20×35	6-M10×20	M8×75	12	21
SH-125	125	25	160	140	130	11	35	50	25	82	213	M24×45	6M12×20	M8×85	12	25
SH-150N	150	30	190	170	130	11	45	55	25	95	226	M24×45	12M12×24	M10×100	16	31
SH-200N	200	35	245	220	145	120	55	70	35	115	249.5	M30×60	12M12×30	M10×125	21	37

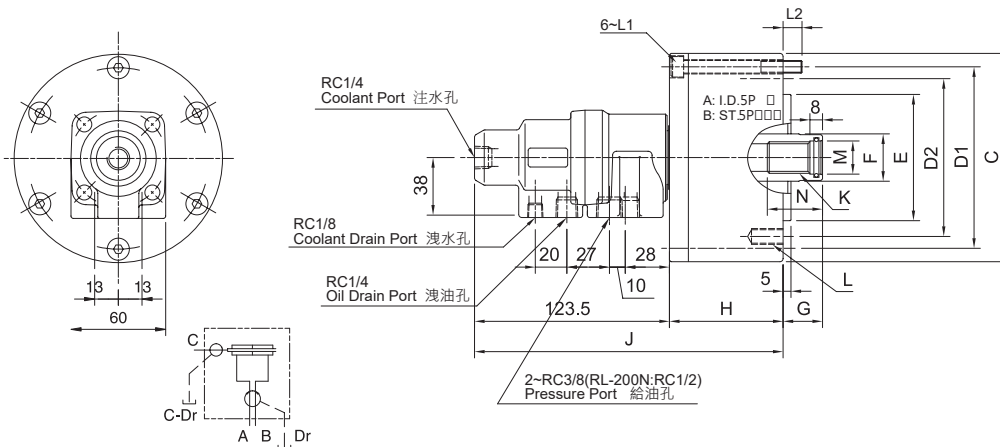
SH-A | 中实注水型回转油缸

ROTATING HYDRAULIC CYLINDER WITH COOLANT CONNECTION



1. 高速，注水型回转油压缸，可经有后端回转继手供给切削水。
2. 安装时可由后端锁住。
3. 泄油孔配管务必单独接回油压槽，以避免产生背压。
4. 注水部无流体通过时，请勿运转。

1. To allow coolant to be feed from the rear end of the distributor through the rotating union.
2. Can screw it from the rear end of the cylinder when mounting .
3. The drain port should be independently connected to oil tank to avoid back pressure.
4. The rotary cylinder should not run without liquid through coolant port.



性能参数 Performance parameters

规格型号 Model/Spec.	活塞面积 Piston area (cm ²)		行程 Stroke (mm)	最高回转数 Highest turnover number min ⁻¹ (rpm)	最高使用压力 Maximum working pressure MPa (kgf/cm ²)	注水部最高使用压力 Coolant connection Max. pressure MPa (kgf/cm ²)	I Moment of inertia kg/m ²	重量 Weight kg
	压侧 Press side	拉侧 Pull side						
SH75A	42.6	37.1	15	6000	4.0 (40)	3.5(35)	0.01	3
SH100A	77	71.5	20	6000	4.0 (40)	3.5(35)	0.04	4.5
SH125A	121.2	113.1	25	6000	4.0 (40)	3.5(35)	0.06	7
SH150A	175.2	160.8	30	5500	4.0 (40)	3.5(35)	0.1	9.6
SH200A	312.5	290.4	35	5500	4.0 (40)	3.5(35)	0.29	15.5

尺寸参数 Size parameters

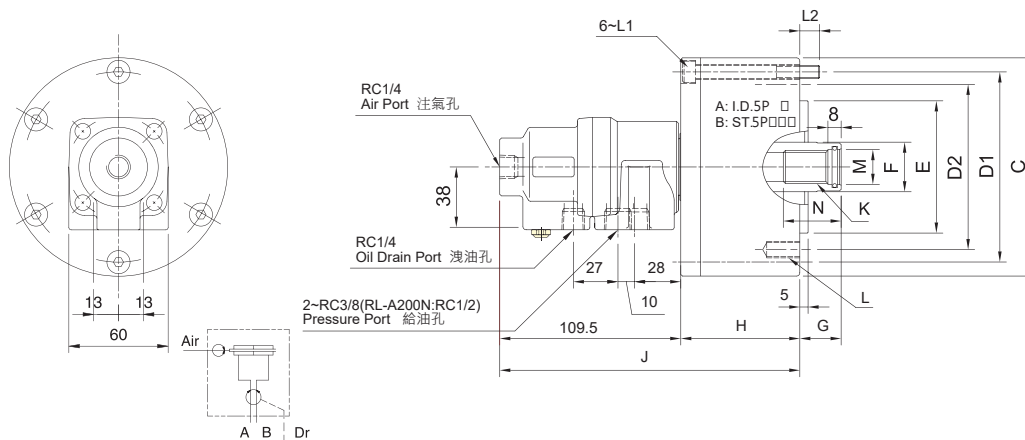
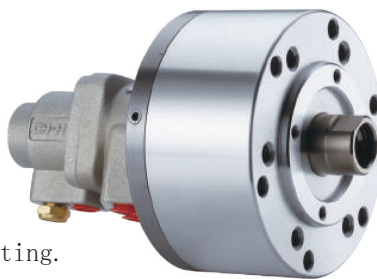
规格型号 Model/Spec.	A	B	C	D1	D2	E (h7)	F	G max.	G min.	H	J	K	L	L1	L2	M(H8)	N
SH75A	75	15	107	90	90	65	30	45	30	57	180	M20x2.5	6-M8x16	M8x60	12	21	35
SH100A	100	20	132	115	100	80	30	45	25	72	195	M20x2.5	6-M10x20	M8x75	12	21	35
SH125A	125	25	160	140	130	110	35	50	25	82	205	M24x3.0	6-M12x20	M8x85	12	25	45
SH150A	150	30	190	170	130	110	45	55	25	95	218	M30x3.5	12-M12x24	M10x100	16	32	45
SH200A	200	35	245	220	145	120	55	70	35	115	240	M36x4.0	12-M16x 30	M10x125	21	38	60

SH-B | 中实注气型回转油缸

ROTATING HYDRAULIC CYLINDER WITH AIR

1. 高速，注气型回转油缸，可由后端回转継手供给空气。
2. 安装时可由后端锁固之。
3. 使用时，请混入微量的油雾。

1. To allow compressed air to be feed from the rear end of the distributor through the rotating union.
2. Can screw it from the rear end of the cylinder when mounting.
3. When used, a little oil mist should be contained.



性能参数 Performance parameters

规格型号 Model/Spec.	活塞面积 Piston area (cm ²)		行程 Stroke (mm)	最高回转数 Highest turnover number min ⁻¹ (rpm)	最高使用压力 Maximum working pressure MPa (kgf/cm ²)	注气部最高使用压力 Coolant connection Max. pressure MPa (kgf/cm ²)	I Moment of inertia kg/m ²	重量 Weight kg
	押侧 Press side	拉侧 Pull side						
SH75B	42.6	37.1	15	6000	4.0 (40)	0.8 (8)	0.01	3
SH100B	77	71.5	20	6000	4.0 (40)	0.8 (8)	0.04	4.5
SH125B	121.2	113.1	25	6000	4.0 (40)	0.8 (8)	0.06	7
SH150B	175.2	160.8	30	5500	4.0 (40)	0.8 (8)	0.1	9.6
SH200B	312.5	290.4	35	5500	4.0 (40)	0.8 (8)	0.29	15.5

尺寸参数 Size parameters

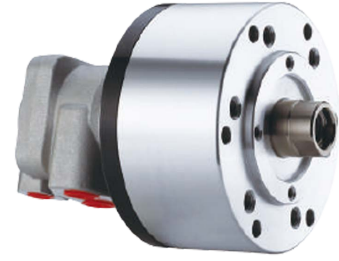
规格型号 Model/Spec.	A	B	C	D1	D2	E (h7)	F	G max.	G min.	H	J	K	L	L1	L2	M (H8)	N
SH75B	75	15	107	90	90	65	30	45	30	57	166	M20 x2.5	6~M8x 16	M8x60	12	21	35
SH100B	100	20	132	115	100	80	30	45	25	72	181	M20 x2.5	6~M10x20	M8x75	12	21	35
SH125B	125	25	160	140	130	110	35	50	25	82	191	M24x 3.0	6~M12x20	M8x85	12	25	45
SH150B	150	30	190	170	130	110	45	55	25	95	204	M30x3.5	12~M12x24	M10x100	16	32	45
SH200B	200	35	245	220	145	120	55	70	35	115	225	M36 x4.0	12~M16x30	M10x125	21	38	60

SH-C

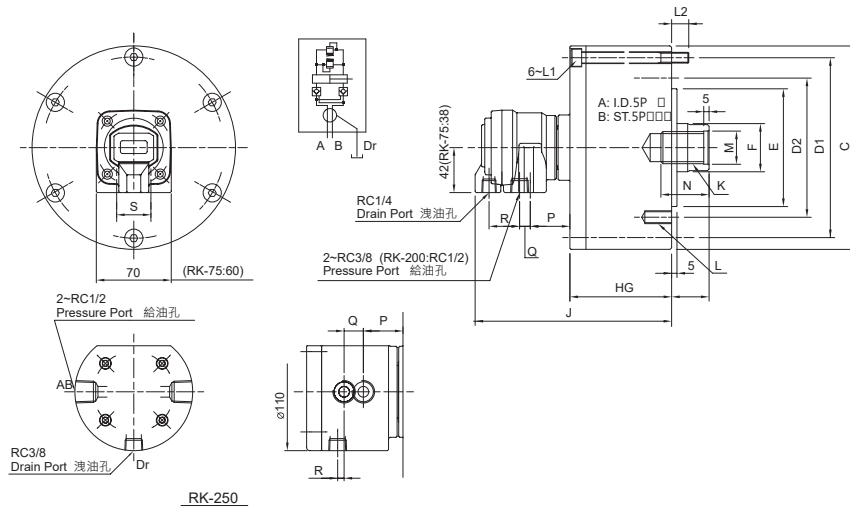
中实逆止阀回转油缸

ROTATING HYDRAULIC CYLINDER WITH SAFETY DEVICE

1. 短型，高速，轻量型回转油压缸。
2. 内建逆止阀自锁机构及压力泄压阀。
3. 安装时可由后端锁固之。
4. 泄油孔配管务必单独接回油压槽，以避免产生背压。



1. For short form, light weight and high speed rotary cylinder.
2. Built-in safety check valves and pressure relief valves.
3. Can screw it from the rear end of the cylinder when mounting.
4. The drain port should be independently connected to oil tank to avoid back pressure.



性能参数 Performance parameters

规格型号 Model/Spec.	活塞面积 Piston area (cm ²)		行程 Stroke (mm)	最高回转数 Highest turnover number min-1 (rpm)	最高使用压力 Maximum working pressure MPa (kgf/cm ²)	注水部最高使用压力 Coolant connection Max. pressure MPa (kgf/cm ²)	I Moment of inertia kg/m ²	重量 Weight kg
	押侧 Press side	拉侧 Pull side						
SH75C	44.2	37.1	15	6000	4.0 (40)	0.01	2.9	3
SH100C	78.5	71.5	20	6000	4.0 (40)	0.03	4.4	4.5
SH125C	122.7	113.1	25	6000	4.0 (40)	0.05	6.9	7
SH150C	176.7	160.8	30	5500	4.0 (40)	0.09	9.5	9.6
SH200C	314.1	290.4	35	5500	4.0 (40)	0.28	15.4	15.5

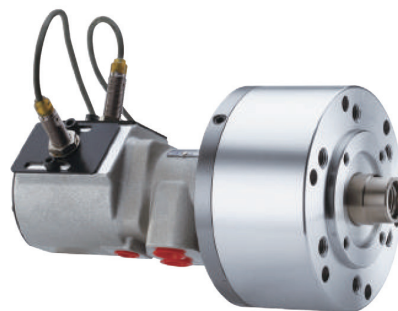
尺寸参数 Size parameters

规格型号 Model/Spec.	A	B	C	D1	D2	E(h7)	F	G max.	G min.	H	J	K	L	L1	L2	M(H8)	N	P	Q	R	S
SH75C	75	15	107	90	90	65	30	45	30	57	148	M20 x2.5	6~M8x 16	M8x60	12	21	35	41.5	10	27.5	26
SH100C	100	20	132	115	100	80	30	45	25	72	163	M20 x2.5	6~M10x20	M8x75	12	21	35	39.5	10	28.5	32
SH125C	125	25	160	140	130	110	35	50	25	82	172	M24x 3.0	6~M12x20	M8x85	12	25	45	38.5	10	28.5	32
SH150C	150	30	190	170	130	110	45	55	25	95	184	M30x3.5	12~M12x24	M10x100	16	32	45	37	10	28.5	32
SH200C	200	35	245	220	145	120	55	70	35	115	201	M36 x4.0	12~M16x30	M10x125	21	38	60	38	6	28.5	28

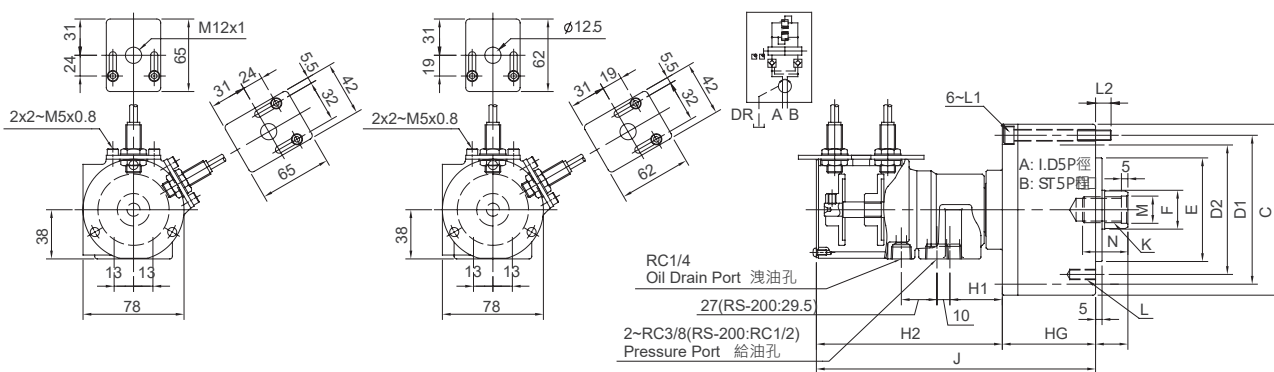
SH-CN | 中实逆止阀行程检出回转油缸

ROTATING HYDRAULIC CYLINDER WITH STROKE CONTROL AND SAFETY DEVICE

1. 短型，高速，行程控制型回转油缸。
2. 感应式近接开关，行程调整容易，可确认油缸正确作动。
3. 内建逆止阀自锁机构及压力泄压阀。
4. 安装时可由后端锁固之。
5. 泄油孔配管务必单独接回油压槽，以避免产生背压。



1. For short form, high speed and stroke control.
2. With proximity sensor, the movement of the position is easy to adjust and confirm when operating.
3. Built-in safety check valves and pressure relief valves.
4. Can screw it from the rear end of the cylinder when mounting.
5. The drain port should be independently connected to oil tank to avoid back pressure.



性能参数 Performance parameters

规格型号 Model/Spec.	活塞面积 Piston area (cm ²)		行程 Stroke (mm)	最高回转数 Highest turnover number min-1 (rpm)	最高使用压力 Maximum working pressure MPa (kgf/cm ²)	I Moment of inertia kg/m ²	重量 Weight kg
	押侧 Press side	拉侧 Pull side					
SH75CN	43	37.1	15	6000	4.0 (40)	0.01	3.4
SH100CN	77.4	71.5	20	6000	4.0 (40)	0.04	4.9
SH125CN	121.6	113.1	25	6000	4.0 (40)	0.05	7.4
SH150CN	175.6	160.8	30	5500	4.0 (40)	0.1	10.7
SH200CN	313	290.4	35	5500	4.0 (40)	0.29	15.9

尺寸参数 Size parameters

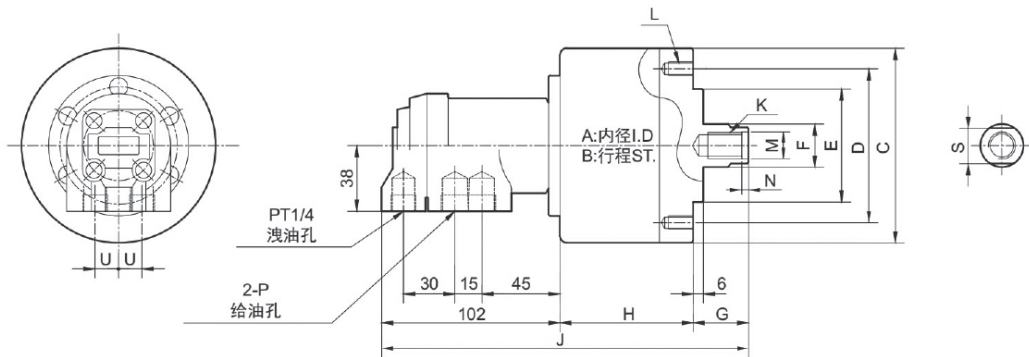
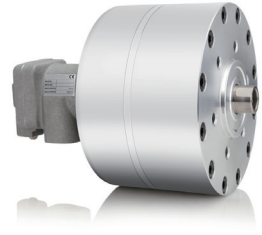
规格型号 Model/Spec.	A	B	C	D1	D2	E(h7)	F	G max.	G min.	H	H1	H2	J	K	L	L1	L2	M(H8)	N
SH75CN	75	15	107	90	90	65	30	45	30	57	42	145	202	M20x2.5	6~M8x16	M8x60	12	21	35
SH100CN	100	20	132	115	100	80	30	45	25	72	42	145	217	M20x2.5	6~M10x20	M8x75	12	21	35
SH125CN	125	25	160	140	130	110	35	50	25	82	41	144	226	M24x3.0	6~M12x20	M8x85	12	25	45
SH150CN	150	30	190	170	130	110	45	55	25	95	39	142	237	M30x3.5	12~M12x24	M10x100	16	32	45
SH200CN	200	35	245	220	145	120	55	70	35	115	34	142.5	257.5	M36x4.0	12~M16x30	M10x125	21	38	60

SH | 高速中实回转油缸

High speed solid rotating oil

1. 质密，轻铝合金制造而成，低惯性，轻量型，可减轻机器主轴的负荷。
2. 高速运转平衡，高寿命，内部零部件皆采用进口原件。
3. 高压型，长行程型，超大缸径型可根据客户需求定制。

1. It is made of compact and light aluminum alloy. It is low inertia and lightweight and can reduce the load on the spindle of the machine.
2. Solid rotary cylinder High-speed rotary balance, high life, internal components are imported originals.
3. High-pressure type, long-stroke type, oversized cylinder type can be customized according to customer's requirements.



性能参数 Performance parameters

规格型号 Model/Spec.	活塞面积 Piston area (cm ²)		行程 Stroke (mm)	最高回转数 Highest turnover number min-1 (rpm)	最高使用压力 Maximum working pressure MPa (kgf/cm ²)	GD2 (kg·m ²)	重量 Weight (kg)
	押侧 Press side	拉侧 Pull side					
SH65	31	27.9	15	6000	3.5 (35)	0.01	2.9
SH80	47.7	42.8	15	6000	3.5 (35)	0.01	3.4
SH100	75.4	70.5	20	5500	3.5 (35)	0.04	4.9
SH125	119.6	112.5	25	5500	3.5 (35)	0.08	6.8
SH150	173.6	157.7	30	4000	4.0 (40)	0.18	11.5
SH200	310	286.3	35	4000	4.0 (40)	0.38	20.4

尺寸参数 Size parameters

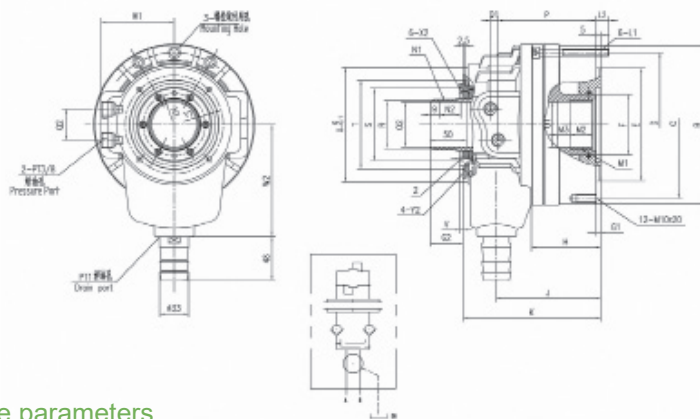
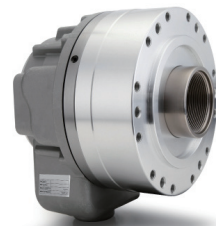
规格型号 Model/Spec.	A	B	C	D	E h7	F	G max.	G min.	H	J	M H8	N	K	L	2-P
SH65	65	15	98	80	60	22	45	30	74	175	/	/	M12×30	6-M8×16	PT3/8
SH80	80	15	112	90	65	25	45	30	74	175	/	/	M16×30	6-M8×16	PT3/8
SH100	100	20	135	100	80	30	45	25	89	190	/	/	M20×35	6-M10×20	PT3/8
SH125	125	25	160	130	110	36	50	25	96	197	/	/	M24×44	6-M12×20	PT3/8
SH150	150	30	190	130	110	45	55	25	105	206	31	5	M30×45	12-M12×24	PT3/8
SH200	200	35	245	145	120	55	70	35	130	231	37	5	M36×60	12-M16×30	PT3/8

TK | 短型中空回转油压缸

Through Hole Short Type Rotating Hydraulic Cylinder

1. 高速短型、大孔径，体积小、重量轻。
2. 高转速状态性能稳定、减轻机械负荷。
3. 油缸内藏止回阀结构，突发压降时仍可保持压力。
4. 安装方便，可任意前锁或后锁固定。

1. High speed short form, large Through-Hole, are light-weight.
2. Meanwhile, the compactness and miniaturization lower the burden of machines.
3. With built-in "check valve", work pieces can be effectively prevented from flying out during abrupt failure of pressure.
4. Easy instauation, the optional front end or back end screw it.



性能参数 Performance parameters

型号/规格 Model/Spec	活塞面积 Piston area (cm ²)		最高回转数 Highest turnover number min-1 (rpm)	最高使用压力 Max. working pressure Mpa (kgf/cm ²)	惯性矩 (kg. m ²)	总泄油量 Total volume of oil drainage	重量 Weight (kg)
	压侧 Press side	拉侧 Pull side					
TK428	51.9	51	7000	40 (4.0)	0.01	2.3	5.8
TK536	70.7	62.8	6000	4.5 (45)	0.05	2.5	7.7
TK646	99.1	88.0	6000	4.5 (45)	0.06	3.0	7.5
TK646 (s)	99.1	88.0	6000	4.5 (45)	0.06	3.0	7.5
TK852	135.3	125.0	6000	4.5 (45)	0.11	3.9	11.8
TK1075	179.5	163.5	5500	4.5 (45)	0.24	4.2	21.5
TK1075 (s)	179.5	163.5	5500	4.5 (45)	0.24	4.2	21.5
TK1291	250.6	234.1	3500	4.5 (45)	0.15	4.2	30
TK1512	365.5	335.3	3000	4.0 (40)	0.38	7	53.6

尺寸参数 Size parameters

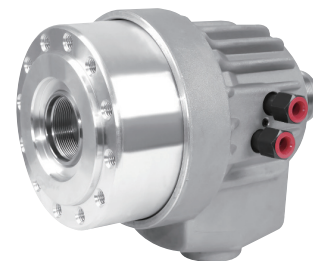
型号/规格 Model/Spec	A	B	C	D	E (h7)	F	G1 max	G1 min	G2 max	G2 min	H	J	K	L1	L2	M1	M2	M3
TK428	90	126	100	108	80	40	10	0	35	25	61	94.5	139	M8*60	14	M33*1.5	25	15
TK536	105	141	115	125	100	48	15	0	38	23	75	110	159.5	M8*70	14	M42*1.5	25	15
TK646	125	165	140	140	120	65	15	0	38	23	75	110	156	M8*75	15	M55*2	25	15
TK646 (s)	125	165	130	147	100	65	15	0	38	23	75	110	156	M8*75	15	M55*2	25	15
TK852	150	185	170	165	130	70	20	0	43	23	77	107	156	M8*75	12	M60*2	30	15
TK1075	175	215	190	195	160	95	25	0	50	25	88	129	184	M10*90	20	M85*2	35	15
TK1075 (s)	175	215	190	190	160	95	25	0	50	25	88	129	184	M10*90	20	M85*2	35	15
TK1291	205	248	215	225	180	110	30	0	50	20	95	144	196	M12*100	20	M100*2	35	-
TK1512	250	305	275	280	230	140	30	0	55	25	113	156	245	M12*120	16	M130*2	35	16

型号/规格 Model/Spec	N1	N2	O	O1 H8	O2 H8	P	Q1	Q2	R g7	T	U	V	W1	W2	X1	X2	Y1	Y2
TK428	M34*1.5	25	PT1/4	30	28	89	7	28	32	65	86	2	63	80	43	M4*8	76	M4*7
TK536	M44*1.5	28	PT1/4	38	36	107	9	32	42	75	98	4.5	61	110	54	M4*8	83	M5*6
TK646	M52*1.5	31	PT3/8	50	46	115	9	32	50	91	116	5	62	119	63	M5*8	98	M5*6
TK646 (s)	M52*1.5	31	PT3/8	50	46	115	9	32	50	91	116	5	62	119	63	M5*8	98	M5*6
TK852	M58*1.5	34	PT3/8	55	52	109	9	36	56	100	127	6	77	130	72	M5*8	110	M6*8
TK1075	M84*2	36	PT3/8	80	75	128	12	36	81	124	164	7	98	163	97	M5*8	155	M6*8
TK1075 (s)	M84*2	36	PT3/8	80	75	128	12	36	81	124	164	7	98	163	97	M5*8	155	M6*8
TK1291	M99*2	34	PT3/8	-	91	142	10	52	95	142	183	9	110	165	110	M6*8	170	M6*8
TK1512	M129*2	50	PT3/8	126	120	172	17	50	126	170	227	7	134	210	138	M6*8	210	M6*10

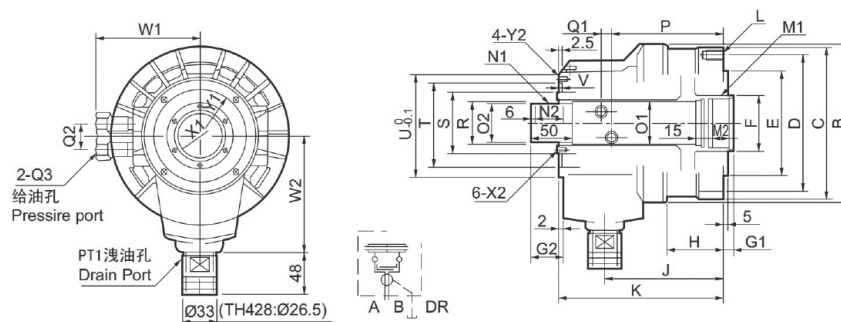
TH | 高速中空回转油缸

Through Hole Rotating Hydraulic Cylinder

1. 轻量型、大通孔型回转油缸，通孔贯穿，可加工长轴类零件。
2. 内建逆止阀自锁机构，可防止配管损伤，压力源损失，确保加工件稳固的夹持。安全可靠。
3. 高转速，高寿命，内部零部件皆采用进口原件。
4. 可根据客户要求定制。



1. Lightweight, large through-hole rotary cylinders with through-holes for machining long-shaft parts.
2. Built-in check valve self-locking mechanism can prevent pipe damage, loss of pressure source, and ensure stable clamping of workpieces. Safe and reliable.
3. High-speed, high-life, internal components are imported.
4. Can be customized according to customer requirements.



性能参数 Performance parameters

规格型号 Model/Spec.	活塞面积 Piston area (cm ²)		行程 Stroke (mm)	最高回转数 Highest turnover number min-1 (rpm)	最高使用压力 Maximum working pressure MPa (kgf/cm ²)	GD2 (kg·m ²)	总泄油量 Total volume of oil drainage	重量 Weight (kg)
	压侧 Press side	拉侧 Pull side						
TH428	53.2	50.5	10	8000	4.0 (40)	0.02	3	5.8
TH536	69.8	67.5	15	8000	4.0 (40)	0.05	3	8.5
TH646	97.3	87.9	15	7000	4.0 (40)	0.09	3	13.5
TH852	146.8	136.6	20	6200	4.0 (40)	0.2	3.9	16.4
TH1075	196.2	182	25	4700	4.0 (40)	0.4	4.2	25.8
TH1291	250.6	234.1	30	3800	4.0 (40)	0.61	4.5	33
TH1512	345.4	334.6	30	2800	4.0 (40)	1.5	7	50

尺寸参数 Size parameters

规格型号 Model/Spec.	A I. D	B	C	D	E (h7)	F	G1 max.	G1 min.	G2 max.	G2 min.	H	J	K	L	M1	M2	N1	N2
TH428	90	130	120	100	80	40	10	/	35	/	45	127.5	155	6-M8×15	M33×1.5	25	M34×1.5	26
TH536	105	150	135	115	100	50	15	/	40	/	47.5	125.5	170.5	6-M10×20	M42×1.5	25	M44×1.5	28
TH646	125	169	156	130	100	65	15	/	40	/	60	135.5	193.5	12-M10×20	M55×2	30	M52×1.5	32
TH852	150	198	188	170	130	70	20	0	45	25	66	145	198	12-M10×20	M60×2	30	M58×1.5	34
TH1075	175	225	213	190	160	95	25	/	50	/	62	166.5	231	12-M10×22	M85×2	35	M84×2	40
TH1291	205	255	240	215	180	110	30	/	55	/	64.5	180.5	250	12-M12×24	M100×2	35	M99×2	46
TH1512	250	315	305	275	230	140	30	/	55	/	68	193	273	12-M16×32	M130×2	45	M134×2	46

规格型号 Model/Spec.	O1 H8	O2 H8	P	Q1	Q2	Q3	R (g7)	S	T	U	V	W1	W2	X1	X2	Y1	Y2	N2
TH428	30	28	101.5	11	24	PT1/4	32	45	65	88	4	72	105	/	/	76	M4×7	26
TH536	38	36	119	11	24	PT1/4	42	55	80	98	4	80	110	/	/	83	M5×10	28
TH646	50	46	127.5	12	30	PT3/8	50	70	95	116	4	98	125	62	M4×8	98	M5×10	32
TH852	55	52	135.5	12	32	PT3/8	56	75	100	128	4	100	130	67	M4×8	110	M6×10	34
TH1075	80	75	153.5	17	36	PT3/8	81	100	125	158	5	115	160	92	M4×8	145	M6×10	40
TH1291	95	91	165	21	34	PT1/2	96	120	142	180	5	136	185	110	M4×8	165	M6×10	46
TH1512	125	120	176.5	23	40	PT1/2	130	160	195	227	6	160	210	171	M6×10	215	M6×10	46

夹头 collet chuck

JAB

高速回转型气动夹头

High speed rotary type pneumatic chuck

1. 此夹头可使用内涨或外夹两种配置。
2. 热处理钢一体成型之结构体，轴承无负荷，转速高、寿命长、温升低。
3. 双向作动力，强制开启筒夹、决不卡料。气源中断时，夹头呈自锁状态。
4. 直接法兰连接于主轴，安装方便快捷，通过三点组合气阀可连接机床系统控制。
5. 快速更换筒夹以方便产品更换，筒夹不后缩，可正常控制工作长度。
6. 本体精度0.01mm以内。

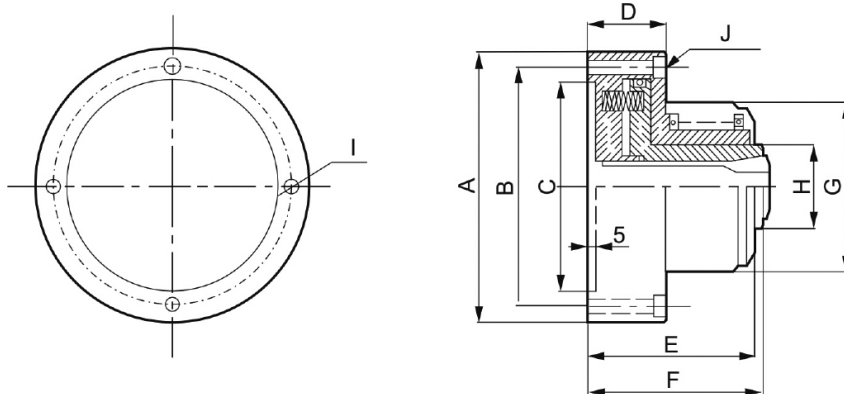
适用性：

1. NC车床、车床、磨床、分度盘、第4/5轴作。
2. 批量工件的车削加工。

1. This chuck can be used in either internal or external clamp configurations.
2. Heat-treated steel integrally formed structure, bearing no load, high speed, long life and low temperature rise.
3. Two-way power, forced open collet, never jam. When the air source is interrupted, the collet is self-locking.
4. The direct flange is connected to the main shaft for quick and easy installation. It can be connected to the machine system through a three-point combination valve.
5. Quickly change the collet to facilitate product replacement, the collet does not retract, and the working length can be controlled normally.
6. The body accuracy is within 0.01mm.

Product suitability:

1. NC lathes, lathes, grinding machines, indexing plates, 4/5 axes.
2. Turning of batch workpieces.



性能参数 Performance parameters

产品型号 Model/Spec.	最高转速 Max. speed (rpm)	活塞行程 Piston stroke (mm)	夹持行程 Clamping stroke (mm)	最大夹持扭力 Maximum torque (N.M)	使用空压压力 Working pressure (kg/cm ²)	夹持范围 Max. chuck diameter (mm)	使用筒夹 Use collet	重量 Net weight (kg)	最大使用压力 Maximum working pressure (kg)
JAB-15	4000	4	1.5-2	3N.M	3-8	φ2-15	YB-15	3.2	3-8kg
JAB-25	4000	4	1.5-2	15N.M	3-8	φ5-25	YB-25	9.5	3-8kg
JAB-40	4000	4	1.5-2	30N.M	3-8	φ5-40	16C	13.5	3-8kg
JAB-60	4000	4	1.5-2	35N.M	3-8	φ5-60	20C	20.35	3-8kg

尺寸参数 Size parameters

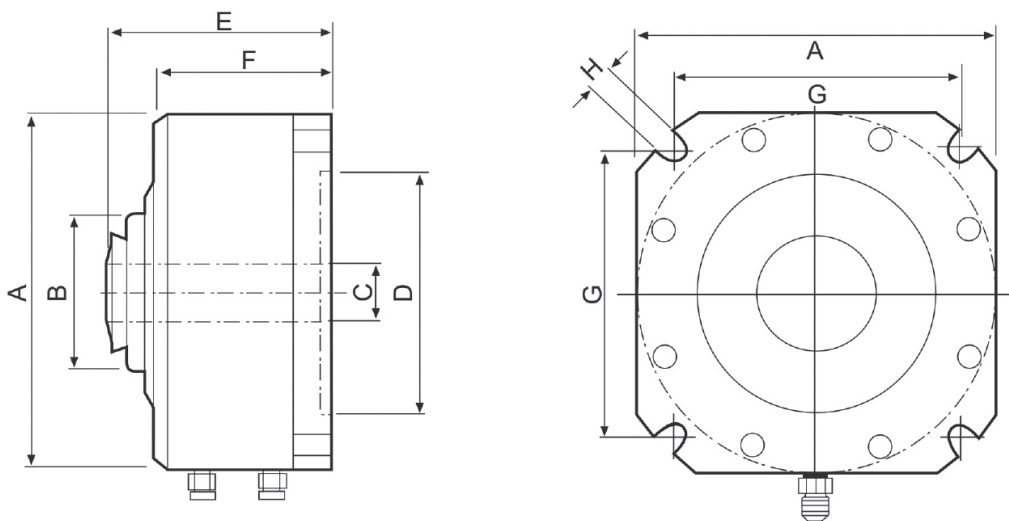
产品型号 Model/Spec.	A	B	C (H6)	D	E	F	G	H	J
JAB-15	φ100	φ84	φ70	40	73	80	φ71	φ30	4-M6沉头孔
JAB-25	φ167	φ147	φ130	48	92	104	φ104	φ52	4-M8沉头孔
JAB-40	φ187	φ168	φ150	50	105	118	φ133	φ72	4-M8沉头孔
JAB-60	φ220	φ203	φ170	55	117	126	φ168	φ100	4-M10沉头孔

JAS | 立式中空气动夹头

Pneumatic fixing chuck

1. 适用于钻床、攻牙机、铣床、中心加工机、圆盘多站加工机。
2. JAS-15使用YB-15筒夹，JAS-25使用YB-25筒夹（此两款空油压通用）。
3. 采用可换式副爪更方便及节省产品变化产生的筒夹成本。

1. Suitable for drilling machines, tapping machines, milling machine, central processing machines, disc multi-station processing machines.
2. The JAS-15 uses the YB-15 collet and the JAS-25 uses the YB-25 collet (the two air hydraulics are common).
3. It is more convenient to use the interchangeable auxiliary claws and save the cost of the collet caused by product changes.



性能参数 Performance parameters

产品型号 Model/Spec.	动力源 Power source	使用压力 Working pressure (kg/cm ²)	最大夹径 Max. chuck diameter	中空孔径 Through-hole aperture	夹持扭力 Clamping torque (kg-m)	重量 Net weight (kg)
JAS-15	空油压 Oil pressure	3~15kg	Φ16	Φ14	5N.M	5
JAS-25	空油压 Oil pressure	3~15kg	Φ28	Φ24	15N.M	9
JAS-40	空压 Air compressor	3~7kg	Φ50	Φ39	30N.M	12.2

尺寸参数 Size parameters

产品型号 Model/Spec.	A	B	C	D	E	F	G	H
JAS-15	118	40	14	90	76	64	98.3	9
JAS-25	144	60	26	100	108	75	115.3	9
JAS-40	168	110	40	100	98	77	136.5	11

JA | 超精密膜片夹头

Ultra-precision diaphragm chuck

1. 采用膜片弹性技术，重复精度 3μ 以下，夹持精度可达 2μ 。
2. 永久性精密寿命。
3. 高密封性设计，防水防尘能力。
4. 轻松控制两端同心度、平行度。
5. 多段尺寸可分次加工、降低设备成本。
6. 以单动研磨机、取代CNC多段同时加工。
7. 空压缸内藏直接驱动。
8. 通过三点组合夹持力能精密微调。

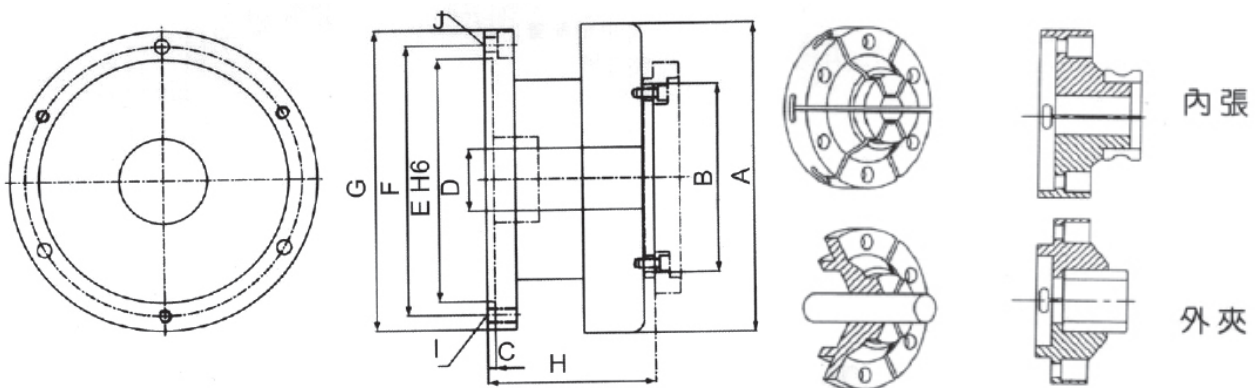
适用性：

1. 微型轴承、马达、精密套的精密加工。
2. 适用于微电子产品、光学零件、医疗零件、轻薄高精密度工件的车、磨加工。
3. 精密元件的检测。

1. With diaphragm elastic technology, the repeatability is less than 3μ , and the clamping accuracy can reach 2μ .
2. Permanent precision life. Highly sealed design, waterproof and dustproof.
3. Easily control the concentricity and parallelism of both end.
4. Multi-stage size can be processed in several stages to reduce equipment costs.
5. The single-action grinding machine replaces the CNC multi-stage simultaneous processing.
6. The air compressor has a built-in direct drive.
7. The three-point combination clamping force can be finely adjusted.

Product suitability:

1. Precision machining of miniature bearings, motors and precision sets.
2. It is suitable for the turning and grinding of microelectronic products, optical parts, medical parts, light and high precision workpieces.
3. Detection of precision components.



性能参数 Performance parameters

产品型号	A	B	C	D	E (H6)	F	G	H	I	J	最高转速 Maximum speed (r. p. m)	使用压力 Pressure used (kg/cm ²)	夹持行程 Holding stroke (mm)	净重 Net weight (Kg)	使用夹爪型号 Use gripper model
JA4-60	100	60	4	10	70	82	97	76	-	4-M6沉头孔	4000	2~7	0.1	2.8	JD-60
JA5-70	147	70	4	15	100	115	137	93	3M-8	3-M8沉头孔	3200	2~7	0.3	7	JD-70
JA6-100	177	100	5	35	130	147	167	107	3M-10	3-M10沉头孔	2500	2~7	0.3	11.5	JD-100
JA8-150	215	150	5	65	180	200	220	124	3M-10	3-M10沉头孔	2000	2~7	0.3	15	JD-150

JA | 空压回转型快速夹头

Pneumatic rotary quick chuck

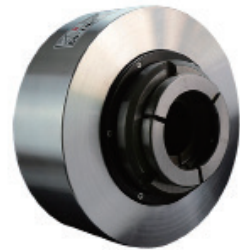
1. 油压内藏机械，免装油压回转缸。
2. 夹持精度0.05~0.08mm（离端面10mm）。
3. 严密防尘设计，确认保护轴承适用寿命。
4. 油压规格握力强劲，轻松胜任重切削。
5. 结构简单、高效率、低成本设计。
6. 铝合金缸体、质轻、散热性有效降低温度。

适用性：

1. 适用于一般精度的管轴类产品切断、内外径车削加工。

注意事项：

1. 防水能力不足，请勿长时间使用具备压力的切削液。



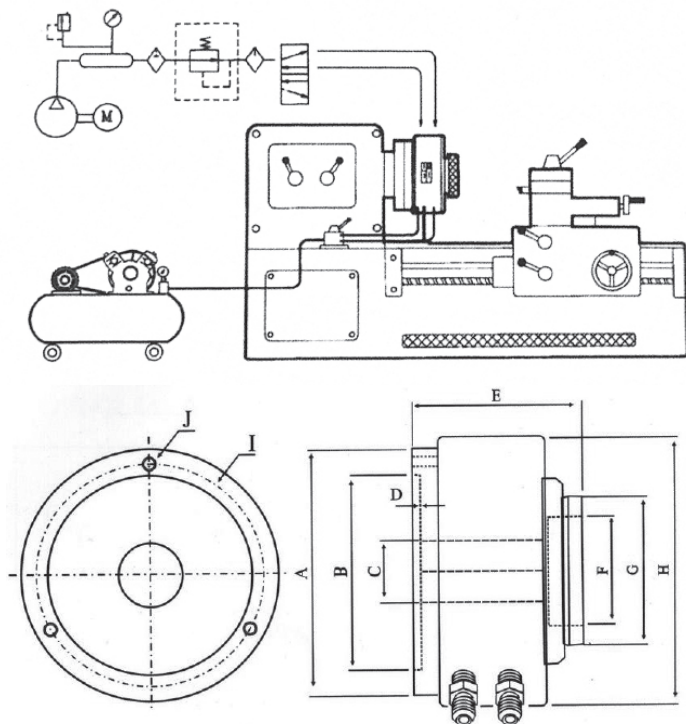
1. Hydraulic built-in machinery, free of hydraulic cylinder.
2. Clamping accuracy 0.05~0.08mm(10mm from the end face).
3. The tight dustproof design confirms the applicable life of the protective bearing.
4. The oil pressure gauge has a strong grip and is easy to handle heavy cutting.
5. Simple structure, high efficiency and low cost design.
6. The aluminum alloy cylinder body, light weight and heat dissipation effectively reduce the temperature.

Product suitability:

1. It is suitable for cutting and inner and outer diameter turning of pipe shaft products with general precision.

Precautions:

1. Insufficient water resistance, do not use pressurized cutting fluid for a long time.



性能参数 Performance parameters

产品型号 Product number	A	B	C	D	E	F	G	H	I
JA5-25	135	100	26	4	105	45	68	170	115
JA7-40	192	155	46	5	125	65	95	212	172
JA7-70	192	155	69	5	140	105	136	266	172

尺寸参数 Size parameters

产品型号 Product number	J	使用压力 Pressure used kg/cm ²	极限转速 Maximum speed	夹持扭力 Clamping torque	适配夹爪 Adapter jaws	夹持行程 Holding stroke	中空孔径 Hollow Aperture	最大夹径 Maximum clamping diameter	重量 Weight (KG)
JA5-25	M8×1.25	2~8	1800rpm	15N.m	C-25	1.5mm	φ25	φ32	7.6
JA7-40	M10×1.5	2~8	1800rpm	25N.m	C-40	1.5mm	φ40	φ50	15.3
JA7-70	M10×1.5	3~8	1600rpm	30N.m	C-70	1.5mm	φ68	φ90	25

注：夹持扭力是以6kg/cm²压力夹持φmm圆棒测得。

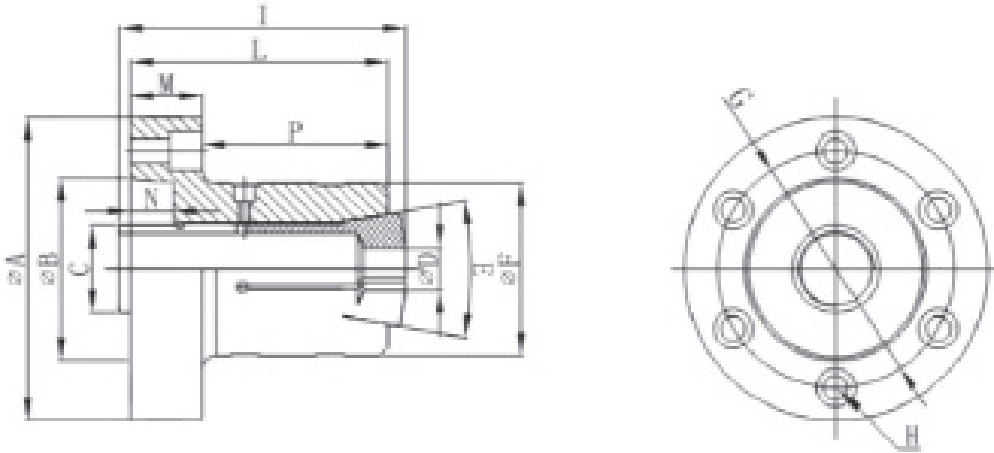
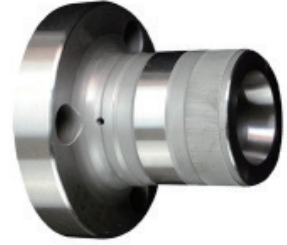
Note: The clamping torque is measured by clamping a φmm round bar with a pressure of 6kg/cm².

JB | 后拉式被动夹头

Pull back power collet chuck

1. 全钢设计
2. 热处理钢一体成型之结构体本体精度0.005mm以内。
3. 适用于：NC车床、车床、研磨机。

1. All steel design.
2. Heat treatment steel integrally formed structure body accuracy within 0.005mm.
3. Suitable for: NC lathe, lathe, grinder.



尺寸参数 Size parameters

型号/规格 Model/Spec	JB-15	JB-25	JB-40	JB-60
安装接口方式 Installation	直口 Straight Type	A2-4	A2-5	A2-6
A	80	106	132	164
B	55	63.513	82.563	106.375
C	M18*1.2	31.3*20牙	M47.5*1.75	M72*2
D(Max)	13.5	25.5	40.5	62
E	30°	20°	20°	20°
F	45	60	72	100
G	66	82.6	104.8	133.4
H	3-M6 沉孔	3-M8 沉孔	3-M10 沉孔	3-M12 沉孔
I	77.9	100	112	125
L	75	90	90	108
M	20	25	25	25
N	5	15	15	20
P	55	65	65	83
适用筒夹 Matching Collet	YB-15	YB-25	16C	20C
最高回转速 Maximum speed (rpm/min)	6000	6000	6000	5000

JH | 液压回转型快速夹头

Hydraulic rotary type quick chuck

1. 油压内藏机械，免装油压回转缸。
2. 夹持精度0.05~0.08mm（离端面10mm）
3. 严密防尘设计，确认保护轴承适用寿命。
4. 油压规格握力强劲，轻松胜任重切削。
5. 结构简单、高效率、低成本设计，铝合金缸体、质轻、散热性有效降低温度。

产品适用性：

1. 适用于一般精度的管轴类产品切断、内外径车削及端面加工。
2. 过度疲劳使用，筒夹有断裂机率并有射出伤人危险，使用时务必加装防护罩。

注意事项：

1. 防水能力不足，请勿长时间使用具备压力的切削液。
2. 请严格遵守压力与转速限制的规定，以确保轴承寿命（如下图表）。



1. Hydraulic built-in machinery, free of hydraulic cylinder.
2. Clamping accuracy 0.05~0.08mm(10mm from the end face)
3. The tight dustproof design confirms the applicable life of the protective bearing.
4. The oil pressure gauge has a strong grip and is easy to handle heavy cutting.
5. Simple structure, high efficiency and low cost design, aluminum alloy cylinder, lightweight and heat dissipation effectively reduce temperature.

Product suitability:

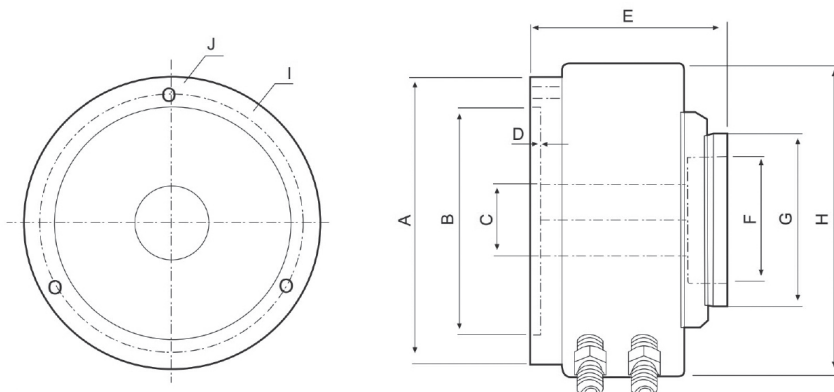
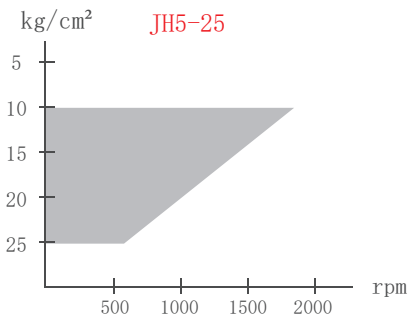
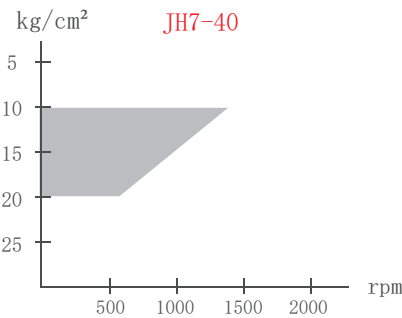
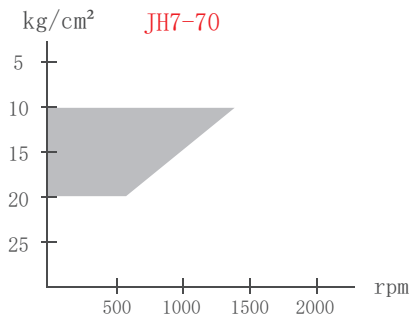
1. Applicable to general precision pipe shaft cutting, inner and outer diameter turning and end face machining.
2. Excessive fatigue, the collet has a probability of breaking and there is a danger of shooting and injury. Always use a protective cover when using it.

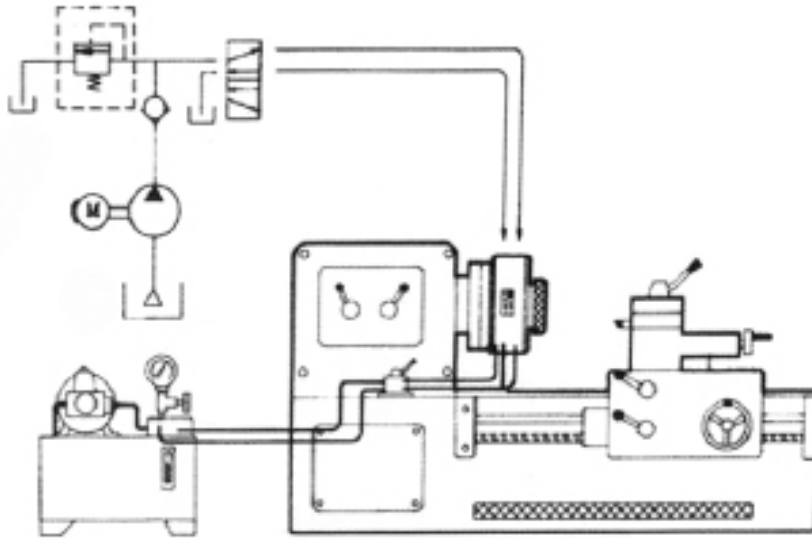
Precautions:

1. Insufficient water resistance, do not use pressurized cutting fluid for a long time.
2. Please strictly observe the pressure and speed limit regulations to ensure bearing life.

Product suitability:

1. NC lathes, lathes, grinding machines, indexing plates, 4/5 axes.
2. Turning of batch workpieces.





性能参数 Performance parameters

产品型号 Product number	A	B	C	D	E	F	G	H	I
JH5-25	135	100	26	4	105	45	68	138	115
JH7-40	192	155	46	5	125	65	95	192	172
JH7-70	192	155	69	5	139	105	126	212	172
JH9-90	230	190	89	6	110	105	136	232	210
JH9-120	230	190	120	6	160	140	168	275	210

尺寸参数 Size parameters

产品型号 Product number	J	使用压力 Working pressure (kg/cm ²)	极限转速 Limit speed (rpm)	夹持扭力 Clamping torque (kg-m)	夹持行程 Clamping stroke (mm)	中空孔径 Through-hole aperture	最大夹径 Max. chuck diameter	适配爪 Adapter jaws	重量 Net weight (kg)
JH5-25	3-M8	10~25	1800	30N.m	1mm	Φ26	Φ32	C-25	6.9
JH7-40	3-M10	10~20	1600	40N.m	1mm	Φ45	Φ50	C-40	13.6
JH7-70	3-M10	10~20	1400	40N.m	1mm	Φ68	Φ90	C-70	21
JH9-90	3-M12	10~20	1100	40N.m	1mm	Φ89	Φ90	C-70	23
JH9-120	3-M12	10~18	900	50N.m	1mm	Φ120	Φ132	C-120	32

注：夹持扭力是以20kg/cm²压力夹持φ20mm圆棒测得；请遵守右示压力转速对照表，以确保轴承寿命。

Note: The clamping torque is measured by clamping a φ20mm round rod with a pressure of 20kg/cm²; please follow the pressure and speed comparison table shown on the right to ensure the life of the bearing.

JH(A)7-44 | 油压空压精密回转夹头

O.D. Chucking I.D. Expanding collet chuck

1. 油压缸内藏机械，免装油压回转缸
2. 握力强劲，可以重切削，本体精度0.01mm以内，夹持精度约0.03mm（端面20mm）。
3. 夹头本体一体成型，刚性强、精度高、严密防尘设计，确实保护轴承适用寿命。
4. 铝合金缸体、质轻、散热性佳、有效降低温度。动力源的使用可采用气压或液压，此夹头可做内涨或外夹工件使用。

适用性：

1. 适用于一般精度的管轴类产品切断、内外径车削及端面加工。

注意事项：

1. 防水能力不足，请勿使用切削液。
- 请严格遵守压力与转速限制的规定，以确保轴承寿命（对应压力与转速关系表）。

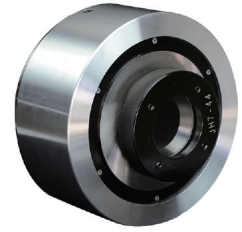
1. Hydraulic built-in machinery, free of hydraulic cylinder.
2. Strong grip, heavy cutting, body accuracy of less than 0.01mm, clamping accuracy of about 0.03mm (end face 20mm).
3. The chuck body is integrally formed, with strong rigidity, high precision and strict dustproof design, which ensures the service life of the bearing.
4. The aluminum alloy cylinder body is light in weight, good in heat dissipation, and effectively reduces the temperature.
5. The power source can be used with air pressure or hydraulic pressure. This chuck can be used for internal or external clamping.

Product suitability:

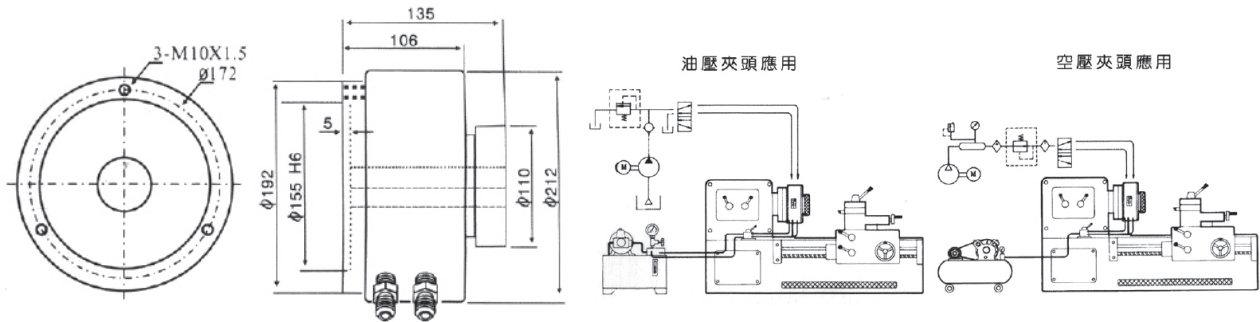
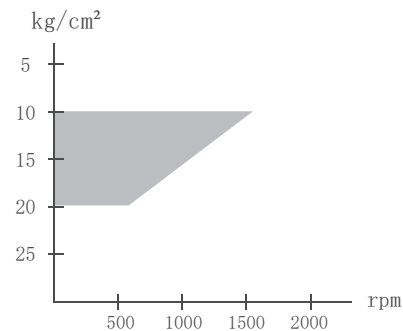
1. Applicable to general precision pipe shaft cutting, inner and outer diameter turning and end face machining.

Precautions:

1. Insufficient water resistance, do not use cutting fluid. Please strictly observe the pressure and speed limit regulations to ensure the bearing life (corresponding to the pressure and speed relationship table).



压力与转速关系表
Pressure and speed relationship table



产品参数 Product parameter

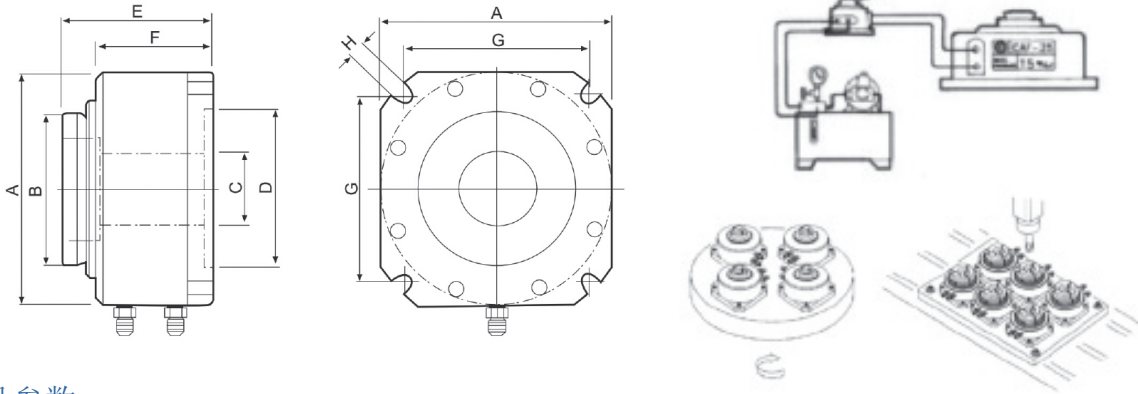
产品型号 Model/Spec.	最高转速 Max. speed (rpm/min)	极限压力 Ultimate pressure (kg)	适配筒夹 Matching Collet	夹持压力 Clamping pressure (kg-m)	中空孔径 Through hole aperture (mm)	夹持行程 Clamping stroke (mm)	重量 Net weight (kg)
JH7-44	1600	10~20	C-44	10	45	1.5	17
JA7-44	1600	2~8	C-44	6	45	1.5	17

JHS | 立式中空液压夹头

Hydraulic fixing chuck

1. 适用于钻床、攻牙机、铁床、中心加工机、圆盘多站加工机。
2. 采用可换式副爪更方便及节省产品变化产生的筒夹成本。

1. Suitable for drilling machines, tapping machines, iron beds, central processing machines, disc multi-station processing machines.
2. It is more convenient to use the interchangeable auxiliary claws and save the cost of the collet caused by product changes.



产品参数 Product parameter

产品型号 Product number	A	B	C	D	E	F	G	H
JHS-40	144	95	38	100	96	73	115.3	11
JHS-70	188	135	68	155	94	73	146.4	11
JHS-90	260	135	87	170	95	73	169.7	13

产品型号 Product number	动力源 Power source	使用压力 Working pressure (kg/cm ²)	最大夹径 Max. chuck diameter	中空孔径 Through-hole aperture	适配夹爪 Adapter jaws	夹持扭力 Clamping torque (kg-m)	重量 Net weight (kg)
JHS-40	油压Oil pressure	20kg/cm ²	Φ50	Φ38	C-40	35N.m	8.5
JHS-70	油压Oil pressure	20kg/cm ²	Φ90	Φ68	C-70	40N.m	13.1
JHS-90	油压Oil pressure	18kg/cm ²	Φ90	Φ87	C-70	40N.m	15.5

注：夹持扭力是以20kg/cm²压力夹持Φ20mm圆棒测得。

Note: The clamping torque is measured by clamping a Φ20mm round bar with a pressure of 20kg/cm².

性能参数 Performance parameters

产品型号 Model/Spec.	使用压力 Working pressure (kg/cm ²)	最大夹径 Max. chuck diameter	中空孔径 Through-hole aperture	夹持扭力 Clamping torque (kg-m)	重量 Net weight (kg)
JHS-40	20kg/cm ²	Φ50	Φ38	15kg-cm	8.5
JHS-70	20kg/cm ²	Φ90	Φ68	18kg-cm	13.1
JHS-90	18kg/cm ²	Φ90	Φ87	15kg-cm	15.5

尺寸参数 Size parameters

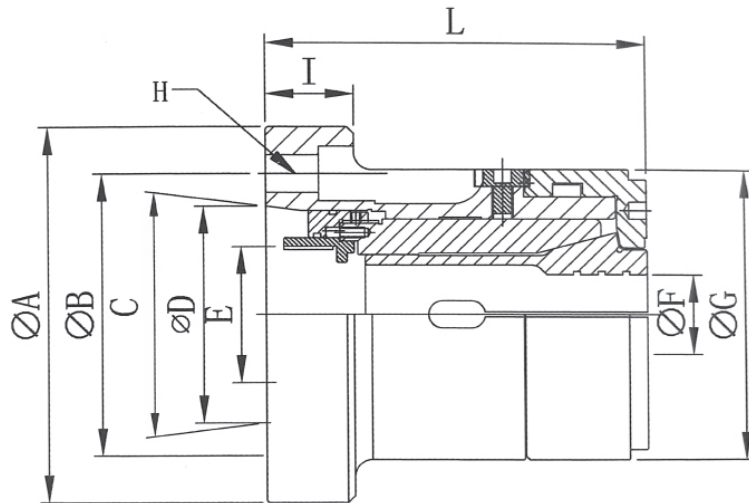
产品型号 Model/Spec.	A	B	C	D	E	F	G	H
JHS-40	144	95	38	100	96	73	115.3	11
JHS-70	188	135	68	155	94	73	146.4	11
JHS-90	260	135	87	170	95	73	169.7	13

JP | 前推式被动夹头

Hydraulic fixing chuck

1. 全钢设计
2. 适配标准主轴鼻端
3. 安装筒夹方便，后置回转缸驱动
4. 安装方便，精度更高，操作更便捷
5. 前推式筒夹不移位，确保工件轴筒尺寸

1. All steel design.
2. Adapt to the standard spindle nose.
3. It is convenient to install the collet and the rear rotary cylinder is moved.
4. Easy to install, higher precision and easier operation.
5. The push-on collet does not shift, ensuring the size of the workpiece barrel.



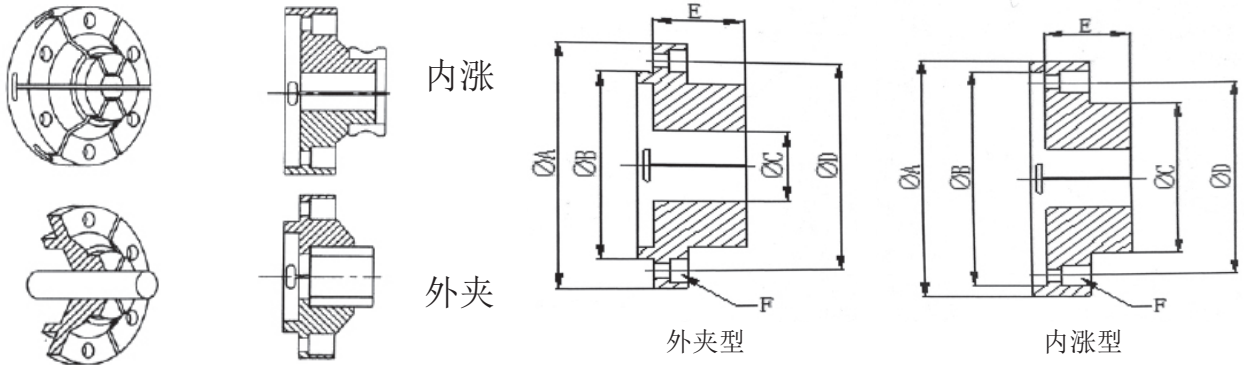
产品参数 Product parameter	产品型号 Product number							
	JP-30		JP-42		JP-60		JP-80	
安装接口方式 Installation form	A4	直口型	A5	直口型	A6	直口型	A8	
A	110	120	155	155	170	185	220	
B	82.6	82.6	104.8	104.8	133.4	133.4	171.4	
C	14.25°	0°	14.25°	0°	14.25°	0°	14.25°	
D	63.513	110	82.563	140	106.375	170	139.7	
E	M40*2	M40*2	M55*2 (M55*1.5)	M55*2 (M55*1.5)	M75*2	M75*2	M114*2	
F (Max)	30	30	42	42	60	60	80	
G	85	85	100	100	130	130	176.4	
H	3-M10	3-M10	4-M10	4-M10	4-M12	4-M12	4-M16	
I	25	23	28	23	27	27	35	
L	108	100	127	120.8	154	154	156	
适配筒夹 Matching collet	163E	163E	173E	173E	185E	185E	193E	
最高回转速 Maximum speed (rpm/min)	7000	7000	6000	6000	5000	5000	4000	

J | 超精密膜片筒夹

Ultra-precision diaphragm collet

1. 重复精度 1μ 以下。
2. 夹持精度可达 2μ 。
3. 一体式结构永久性精密寿命。
4. 有内涨夹持及外夹持两种方式。

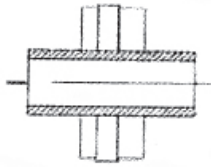
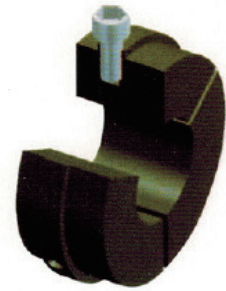
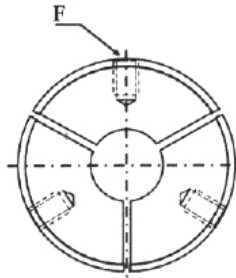
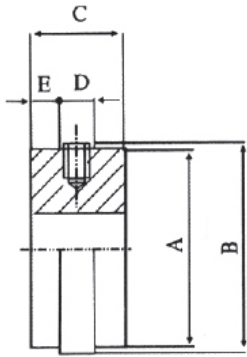
1. Repeatability is 1μ or less.
2. Clamping accuracy of up to 2μ .
3. The one-piece structure has a permanent precision life.
4. There are two ways of internal clamping and external clamping.



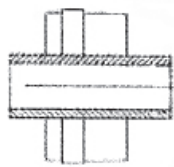
型号/规格 Model/Spec	JD-60		JD-70		JD-100		JD-60	
夹持方式 Clamping method	外夹型 External type	内涨型 Inter type	外夹型 External type	内涨型 Inter type	外夹型 External type	内涨型 Inter type	外夹型 External type	内涨型 Inter type
A	65	70	75	80	105	110	155	160
B	45	60	50	70	80	100	120	150
C(夹持范围) Clamping range	2-60	6-80	3-100	6-140	3-150	6-170	5-200	10-220
D	52	52	60	60	90	90	135	135
E	20	20	22	22	29	29	35	35
F	6-M4 沉头孔	6-M4 沉头孔	6-M5 沉头孔	6-M5 沉头孔	8-M5 沉头孔	8-M5 沉头孔	8-M6 沉头孔	8-M6 沉头孔

C | 空压油压夹头副爪

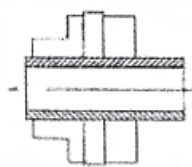
Air pressure hydraulic chuck vice claw



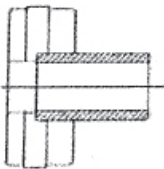
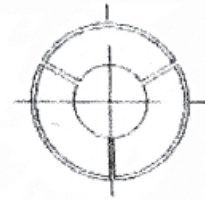
標準型



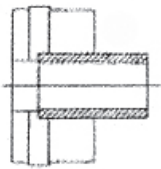
前加長型



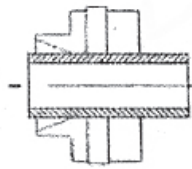
后加長型



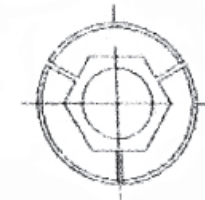
標準臺階型



前加長臺階型



后喇叭型 (后送料)



规格型号 Model/Spec	产品参数 Product parameter					
	A	B	C	D	E	F
C-25	45	47.5	18	7	4.5	M5
C-40	65	67.5	26	9	6	M6
C-70	105	107.5	26	9	6	M6
C-120	140	143	29	9	6	M6

配件 accessories

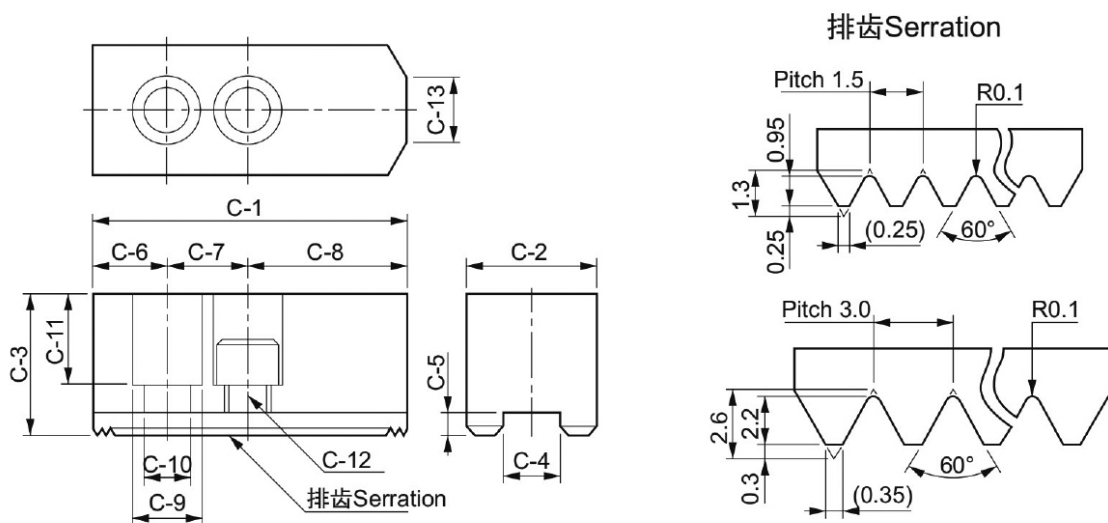
HC

软爪

Soft jaw for hydraulic power chuck

1. CNC车床用软爪

1. Soft jaw for CNC.



尺寸参数 Size parameters

型号/规格 Model/Spec.	C-1	C-2	C-3	C-4	C-5	C-6	C-7	C-8	C-9	C-10	C-11	C-12	C-13	排齿节距 Serration Pitch	三爪重量 3 jaw weight (kg)
HC04	53	23	23	10	5	9	14	30	14	9	14	M8	3	1.5×60°	0.45
HC05	62	25	30	10	5	9	14	39	14	9	21	M8	5	1.5×60°	0.7
HC06	73	31	36	12	5	15	20	38	17	11	21	M10	14	1.5×60°	1.5
HC08	95	35	37	14	5	24	25	46	19	13	22	M12	16	1.5×60°	2.4
HC10	110	40	42	16	5	30	30	50	19	13	27	M12	18	1.5×60°	3.7
HC12	130	50	50	21	5	39	30	61	25	17	33	M16	23	1.5×60°	6.5
HC15	165	62	62	22	8	37	43	85	32	21	38	M20	/	1.5×60°	12.5
HC08-1	95	35	37	12	5	24	20	51	17	11	21	M10	14	1.5×60°	2.4
HC12-1	130	50	50	18	5	39	30	61	23	15	30	M14	23	1.5×60°	6.6
HC15-1	165	62	62	25.5	5	37	43	85	32	21	38	M20	/	1.5×60°	12.5
HC24-1	180	64	70	25	9	40	60	80	32	21	45	M20	/	3.0×60°	15.8
HC32-1	210	74	90	25	9	40	80	90	32	21	65	M20	/	3.0×60°	29.2

HJ

硬爪

Hard jaw for hydraulic power chuck

1. CNC车床用硬爪。

1. Hard jaw for CNC.

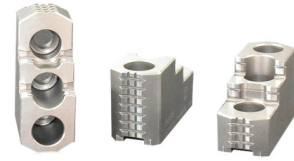


图1

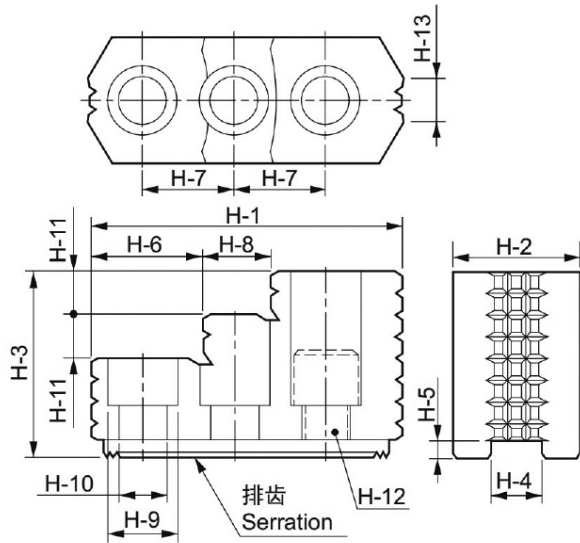
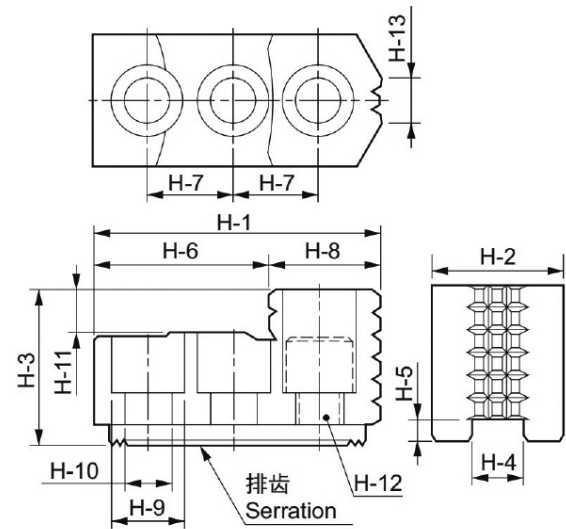


图2



尺寸参数 Size parameters

型号/规格 Model/Spec.	H-1	H-2	H-3	H-4	H-5	H-6	H-7	H-8	H-9	H-10	H-11	H-12	H-13	排齿节距 Serration Pitch	参考图 Reference Drawing	三爪重量 3 jaw weight (kg)
HJ05	53	23	27.5	10	4	30.5	14	22.5	13.5	8.5	10	M8	6	1.5×60°	图2	0.4
HJ06	67	31	35	12	5	39.5	20	27.5	17	11	12	M10	11	1.5×60°	图2	1
HJ08	86	35	51	14	5	31	25	18	19	13	12	M12	12	1.5×60°	图1	1.9
HJ10	99.5	40	54	16	5	43	30	17	19	13	13	M12	15	1.5×60°	图1	2.9
HJ12	103	50	52	21	4	62.5	30	40.5	25	17	17	M16	30	1.5×60°	图2	3.5
HJ12-1	103	50	52	18	5	62.5	30	40.5	22	15	17	M14	30	1.5×60°	图2	3.6
HJ15	149	62	86	22	8	63	43	34	32	21	20	M20	40	1.5×60°	图1	9.6
HJ15-1	149	62	86	25.5	5	63	43	34	32	21	20	M20	40	1.5×60°	图1	9.5
HJ24-1	159.5	80	90	25	9	104.5	50	55	32	21	40	M20	55	3.0×60°	图2	14.3

JSJS-X | 接水罩与行程控制

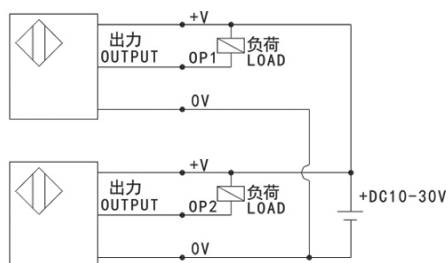
性能参数 Performance parameters

型号 Model	E2E-X2E-Z	代号 Mark	端子链接 Terminal Connections
规格 Spec	(Omron)	Op2	黑 BLACK
电压 Power supply	DC10-30V	+V	棕 BROWN
负载容量 Switching cap	200mA	0V	蓝 BLUE
输出规格 Output type	(NPN)	Op1	黑 BLACK

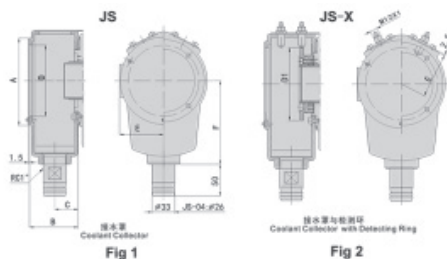


接近开关是选购品
The proximity switch is optional.

接近开关接线图
Proximity switch wiring diagram



尺寸图
Size Fig



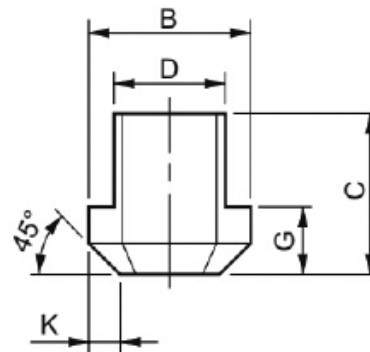
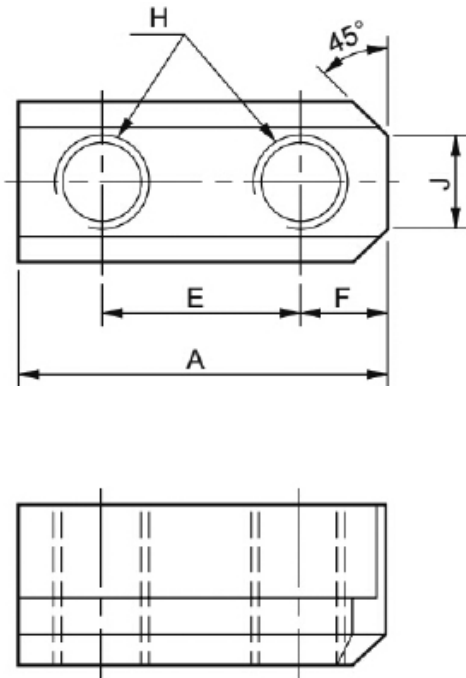
尺寸参数 Size parameters

规格 Spec	A	B	C	D	D1	E	F	适用油压缸 Matching cyl.	重量 Weight kg	图 Fig		
JS-04	98	60	30	79	78	50	100	TK-428	0.88	Fig1		
JS-04x									1.06	Fig2		
JS-05	120	70	35	100	88	61	115	TK-536 TK-646	1.15	Fig1		
JS-05X					99						1.40	Fig2
JS-06												
JS-06X	138	76	38	110	105	70	130	TK-852	1.20	Fig1		
JS-08X									1.70	Fig2		
JS-10	185	85	42	158	128	94	160	TK-1075 TK-1291	1.80	Fig1		
JS-10X					143						2.50	Fig2
JS-12												
JS-12X												
JS-15	235	90	45	206	196	120	210	TK-1512	2.90	Fig1		
JS-15X									4.10	Fig2		

T型块

T-nuts

1. 适用于油压卡盘。
1. Suitable for power chuck.



尺寸参数 Size parameters

型号/规格 Model/Spec.	A	B	C	D	E	F	G	H	J	K
S-05	26	15	15	10	14	6	5.5	M8	5	2
S-06	36	17.5	18.5	12	20	8	7.5	M10	8	2.5
S-08	46	20.5	20.5	14	25	10	8.5	M12	12	4
S-10	51	22.5	21.5	16	30	11	8.5	M12	11	3
S-12	55.5	29.5	28	21	30	12	11.5	M16	13	4.5
S-15	80	33.5	45.5	24	43	17	16.5	M20	11	5
K-05	26	14.5	15	10	14	6	5.5	M8	5	2
K-06	36	17.5	22.5	12	20	8	7.5	M10	6.5	3
K-08	48	20.5	25.5	14	25	11	9.5	M12	8	4
K-10	55	22.5	25	16	30	12.5	10.5	M12	8	4
K-12	55.5	26.5	33.5	18	30	11.5	13.5	M14	11	5
K-15	42	35	39.2	25.5	/	/	19	M20	/	25

连接法兰

Flange connecting

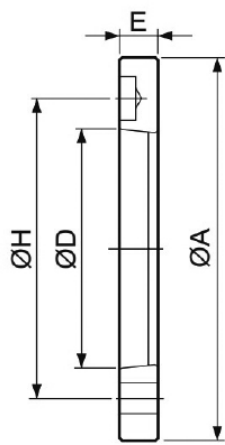


图1

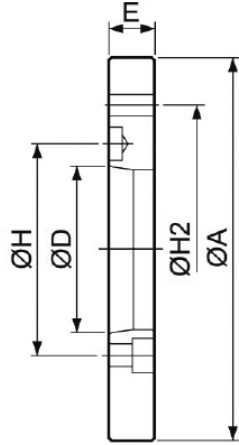


图2

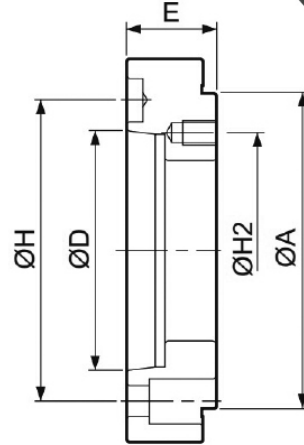


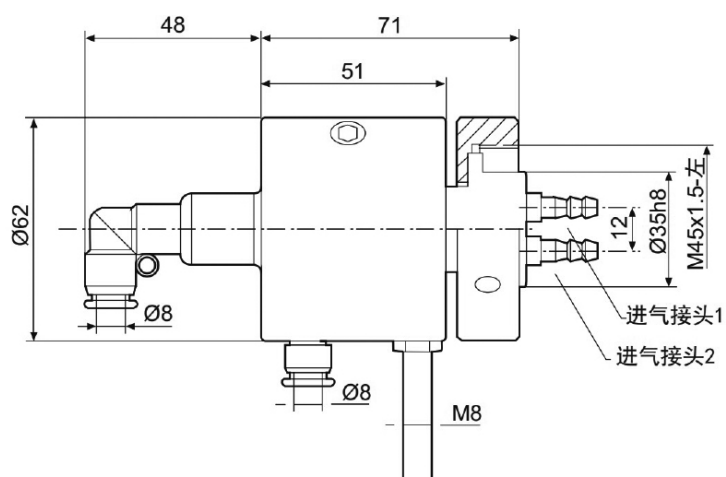
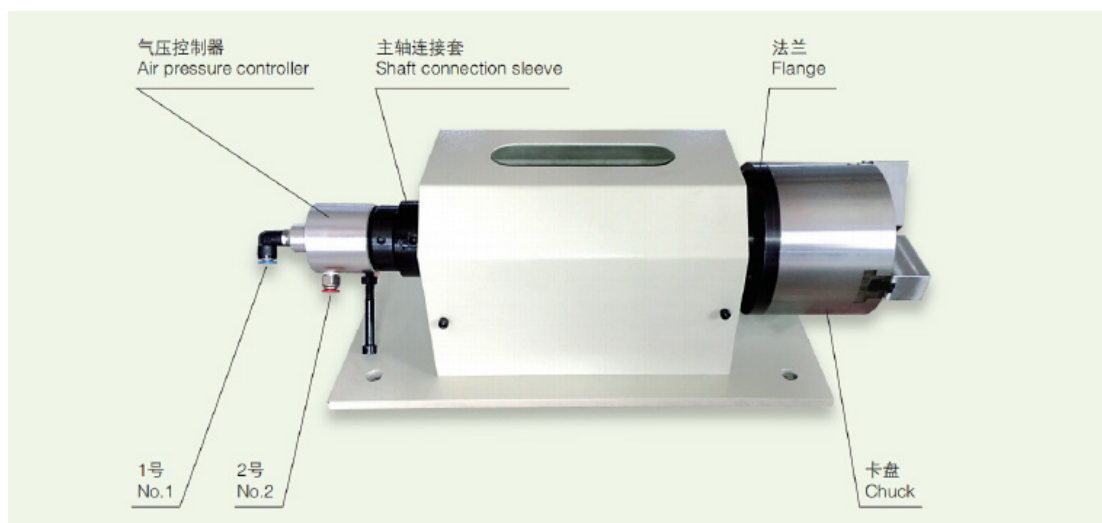
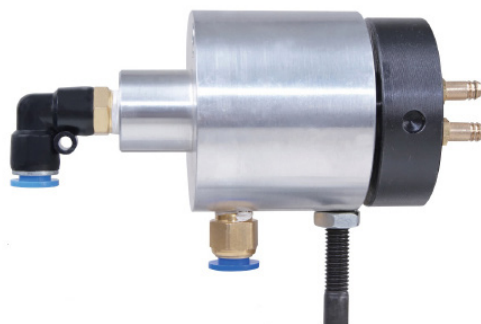
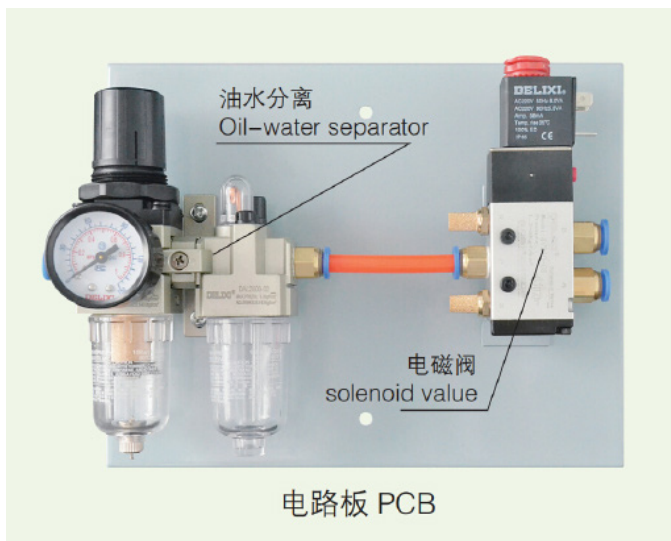
图3



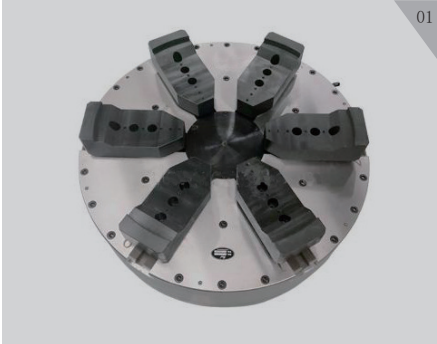
尺寸参数 Size parameters

型号/规格 Model/Spec.	主轴头号 Nose of Spindle D	A	H	H2	E	参考图 Reference Drawing
05A ₂ 4	A ₂ 4	110	82.6	/	20	图1
06A ₂ 5	A ₂ 5	140	104.8	/	15	图1
08A ₂ 6	A ₂ 6	170	133.4	/	17	图1
10A ₂ 8	A ₂ 8	220	171.4	/	18	图1
12A ₂ 8	A ₂ 8	220	171.4	/	18	图1
15A ₂ 11	A ₂ 11	300	235	/	22	图1
18A ₂ 11	A ₂ 11	300	235	/	22	图1
21A ₂ 15	A ₂ 15	380	300.2	/	27	图1
06A ₂ 4	A ₂ 4	140	82.6	104.8	20	图2
08A ₂ 5	A ₂ 5	170	104.8	133.4	23	图2
10A ₂ 6	A ₂ 6	220	133.4	171.4	28	图2
12A ₂ 6	A ₂ 6	220	133.4	171.4	28	图2
15A ₂ 8	A ₂ 8	300	171.4	235	33	图2
18A ₂ 8	A ₂ 8	300	171.4	235	33	图2
21A ₂ 11	A ₂ 11	380	235	330.2	41	图2
05A ₂ 5	A ₂ 5	110	104.8	82.6	45	图3
06A ₂ 6	A ₂ 6	140	133.4	104.8	40	图3
08A ₂ 8	A ₂ 8	170	171.4	133.4	45	图3
12A ₂ 11	A ₂ 11	220	235	171.4	54	图3

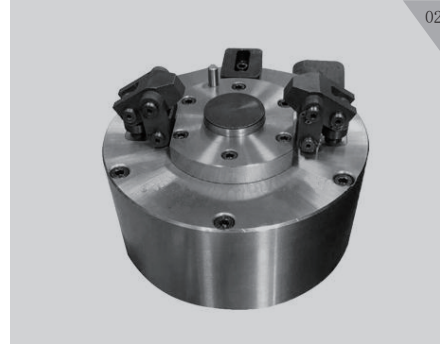
气压控制器



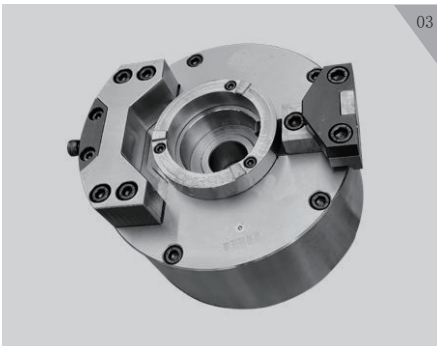
非标定制系列 non-standard custom series



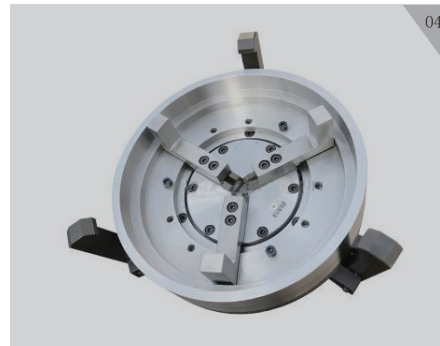
一米立车液压卡盘
Meter vertical lathe hydraulic chuck



叉车连接件压板式气动夹具
Forklift connector press plate type pneumatic clamp



单爪液压夹具
Single claw hydraulic clamp



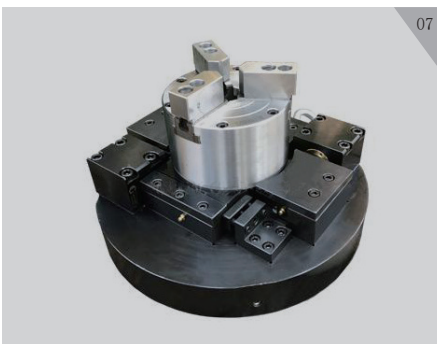
电摩后轮毂气动夹具
Electric friction wheel hub pneumatic clamp



内涨式平衡夹具
Internal expansion balance fixture



前置式气动胀套内胀夹具
Front-mounted pneumatic expansion sleeve internal expansion fixture



液压偏心夹具
Hydraulic eccentric clamp



长方形两爪自定心夹具
Rectangular two-jaw self-centering fixture