

# EDGE

TECHNOLOGIES

Collets on pressure  
Special collets  
Pick-up collets  
Guide bushings  
Bar feed collets  
CAV bar feed collets  
Inside clamping sleeves  
Rotating inserts  
Turbo-bar feed collets  
Turbo rotating inserts  
VKK



# Edge Online



Visit us online  
[www.edgetechnologies.com](http://www.edgetechnologies.com)



**Custom Solutions**

**2**

**Products**

**6**

**SUMMARY.**



## S-Slot guide bushing

- Ideal if high-pressure cleaning is used in the machine, no chip and dirt debris in the guide bush
- Concentricity of the guide bush <math><0.005\text{ mm}</math>
- Deviations of the material can be bypassed
- Ideal for square- and hex material
- Even guiding
- Guiding without marks on the material
- Easy to clean after the use



## S-Slot collet

- Clamping without marks on the material
- Concentricity of the collet <math><0.005\text{ mm}</math>
- Deviations of the material can be by-passed
- Ideal for square- and hex material
- High and even tension
- No debris in the collet, since it completely closes
- Easy to clean after the use



## SB guide bushing

- Ideal for swiss type machines
- For materials with hard gliding properties, like titanium
- Prevents welding of guiding area and part (Stick-Slip-Effect)



## BL guide bushing

- For titanium processing, has better gliding properties
- Ideal for smaller quantities, is the less expensive alternative to the SB guide bush
- Prevents the welding of the material in the guide bush



## Brass-/ Synthetic- / Aluminum collets

- Prevents stains on the material
- Inserts are exchangeable after wearing and tearing
- Ideal for material sensitive to scratching and excellent for smooth pick-up



## Long-nose guide bushing

- Improves the stability of the part, when used with power-tools, by shifting the guiding area forward



## Special Collets

- Various special profiles, steps and adaptation to partial contours realizable



## Overgripping collet

- Used on a pick-off spindle when it is required to clear a shoulder and grip on a smaller diameter beyond (over the shoulder collet)



## Step collet

- Clamping on two different diameters possible
- Available for all collet types



## Guide bush with extended HM-insert (carbide insert)

- Guiding surface up to 40 mm
- Machining of a bigger part spectrum
- High concentricity



## Closed bar feed collets

- Reduces the changeover time due to complete use of the channel
- Higher holding time due to closed slots
- Available in all common models and also usable for profile material



## Collets with carbide insert

- All the standard collets are available with carbide insert
- advantage: larger endurance

## ALL COLLETS WITH THE FOLLOWING INNER CONTOURS AVAILABLE:



### Smooth

- Standard up to  $\varnothing 5,9$
- Bigger sizes also available in smooth with additional cost



### Serrated

- Standard grooved from diameter  $\varnothing 6,0$  and above



### Serrated

- vertical & horizontal grooved (L & Q)

## ALL COLLETS WITH THE FOLLOWING INNER CONTOURS AVAILABLE:



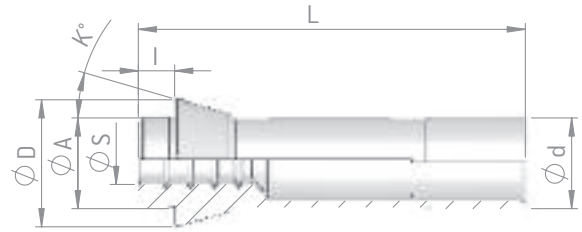
### Carbide coating

- (inside)



### Supergrip

# DEAD LENGTH COLLETS SERIES 100



part no.	$\phi d$ (mm)	$\phi D$ (mm)	$\phi A$ (mm)	length l (mm)	length L (mm)	cone $\alpha$ (degree)	inside shape	clamping range (mm)	increments (mm)
101 E F 8 TF8	8	12	8	5	42	16	●	1,0	
								1,5 - 2,5	0,5
								3,0 - 6,0	0,5
102 E	8	13,7	9	3	30	21	●	0,5 - 6,0	0,5
109 E F 10 TF10	10	15,5	10	5,5	47,5	20	●	0,5 - 0,9	0,1
								1,0	
								1,5 - 2,5	0,5
							3,0 - 7,0	0,5	
							● ■	PR	PR
112 E	11	18,7	12	6	41	22	● ■	0,5 - 8,0	0,5
								PR	PR
116 E F 13	13	19	13	6	64	16	●	1,0 - 2,5	0,5
								3,0 - 10,0	0,5
							● ■	4,0 - 8,0	1,0
118 E	14	19,5	15	6	46	15	● ■	0,5 - 10,5	0,5
								PR	PR
120 E F 15 TF15	15	21	15	6	64	16	●	0,5 - 0,9	0,1
								1,0 - 1,5	0,5
								2,0 - 2,5	0,5
								3,0 - 12,0	0,5
								12,5 - 13,0	0,5
							● ■	2,0 - 3,5	0,5
							4,0 - 8,0	0,5	
10,0									

PR = per request

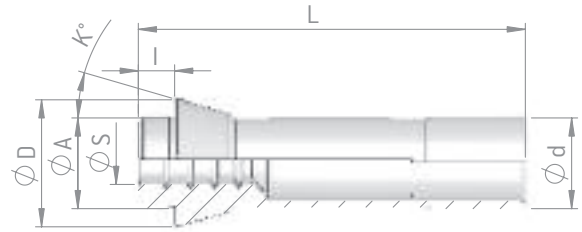
>> Table to be continued



Custom solutions can be delivered for all dead length collets.



# DEAD LENGTH COLLETS SERIES 100



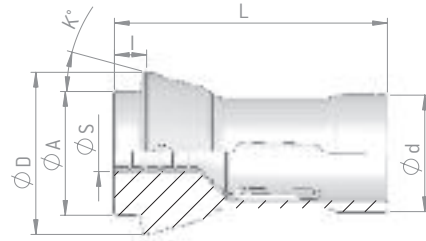
part no.	$\phi d$ (mm)	$\phi D$ (mm)	$\phi A$ (mm)	length l (mm)	length L (mm)	cone $\alpha$ (degree)	inside shape	clamping range (mm)	increments (mm)	
1212 E F 16 TF16	16	21	16	6	64	16	●	0,5 - 0,9	0,1	
								1,0 - 2,5	0,5	
								3,0 - 12,0	0,5	
								● ■	3,0 - 10,0	1,0
136 E F 20-201	20	26	19	5	54	15	●	0,5 - 0,9	0,1	
								1,0 - 1,5	0,5	
								2,0 - 2,5	0,5	
								3,0 - 16,0	0,5	
								16,5 - 17,0	0,5	
								● ■	3,0 - 3,5	0,5
								4,5 - 7,5	1,0	
								●	4,0 - 14,0	1,0
								■	4,0 - 10,0	1,0
138 E F 20-87 TF20	20	28	21	7	67	16	●	0,5 - 0,9	0,1	
								1,0 - 1,5	0,5	
								2,0 - 2,5	0,5	
								3,0 - 16,0	0,5	
								16,5 - 17,0	0,5	
								● ■	4,0 - 6,0	1,0
								●	7,0 - 14,0	1,0
								■	7,0 - 11,0	1,0

>> Table to be continued



All collets mentioned in this catalog can be delivered with a long nose.

# DEAD LENGTH COLLETS SERIES 100



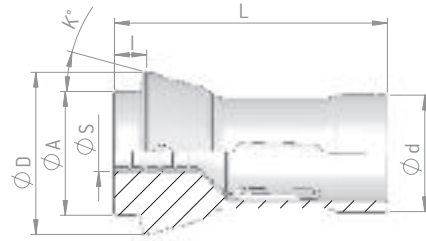
part no.	$\phi d$ (mm)	$\phi D$ (mm)	$\phi A$ (mm)	length l (mm)	length L (mm)	cone $\alpha$ (degree)	inside shape	clamping range (mm)	increments (mm)	
140 E F 22 TF22	22	30	21	6	55	15	●	0,5 - 0,9	0,1	
								1,0		
								1,5 - 2,5	0,5	
								3,0 - 16,0	0,5	
								16,5 - 18,0	0,5	
								●	4,0 - 15,0	1,0
								■	4,0 - 10,0	1,0
145 E F 25 TF25	25	35	27	10	77	16	●	0,5 - 0,9	0,1	
								1,0		
								1,5 - 2,5	0,5	
								3,0 - 20,0	0,5	
								20,5 - 22,0	0,5	
								●	4,0 - 6,0	1,0
								●	7,0 - 17,0	1,0
■	7,0 - 14,0	1,0								
148 E F 28	28	38	28	7	70	15	●	1,5 - 2,5	0,5	
								3,0 - 24,0	0,5	
								24,5 & 25,0		
								●	4,0 - 6,0	1,0
								●	7,0 - 16,0	1,0
								●	17,0 & 19,0	
								●	18,0 & 20,0	
157 E F 30 TF30	30	42	34	10	80	16	●	0,5 - 2,9	0,1	
								3,0 - 24,5	0,5	
								25,0 - 27,0	0,5	
								●	5,0 - 6,5	0,5
								●	7,0 - 17,0 & 19,0	1,0
								●	18,0	
								●	20,0	
EF 30 1446 E	30	38	32	6	65	15	●	3,0 - 25,0	0,5	
								●	5,0 - 17,0 & 19,0	1,0

>> Table to be continued



All long nose collets can also be delivered with special tooling spaces

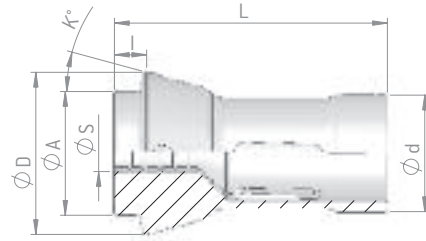
# DEAD LENGTH COLLETS SERIES 100



part no.	$\phi d$ (mm)	$\phi D$ (mm)	$\phi A$ (mm)	length l (mm)	length L (mm)	cone $\alpha$ (degree)	inside shape	clamping range (mm)	increments (mm)
161 E F 32	32	45	34	8	75	15	●	1,0 - 1,5	0,5
								2,0 - 2,5	0,5
								3,0 - 26,0	0,5
								26,5 & 27,0	
								28,0	
							⬡	4,0 - 16,0	1,0
								17,0 & 19,0 & 22,0	
								18,0 & 20,0 & 21,0	
							■	5,0 - 6,0	1,0
								7,0 - 16,0 & 18,0	1,0
								17,0 & 19,0	
							163 E F 35	35	48
2,0 - 2,5	0,5								
3,0 - 30,0	0,5								
30,5 - 32,0	0,5								
4,0 - 6,0	1,0								
⬡	7,0 - 17,0	1,0							
	18,0 & 20,0 & 21,0								
	23,0 & 25,0 & 26,0								
■	19,0 & 22,0 & 24,0 & 27,0								
	5,0 - 6,0	1,0							
	7,0 - 16,0 & 18,0	1,0							
	17,0 & 19,0								
20,0 - 22,0	1,0								
F 37 1536 E TF37	37	47	40	10	92	16	●	0,5 - 0,9	0,1
								1,0 - 2,5	0,5
								3,0 - 32,0	0,5
								32,5 - 33,0	0,5
							⬡	4,0 - 27,0	1,0
								4,0 - 23,0	1,0
							164 E F 38	38,08	49
3,0 - 32,0	1,0								
32,5 & 33,0									
⬡	4,0 - 6,0	1,0							
	7,0 - 27,0	1,0							
■	7,0 - 22,0	1,0							

>> Table to be continued

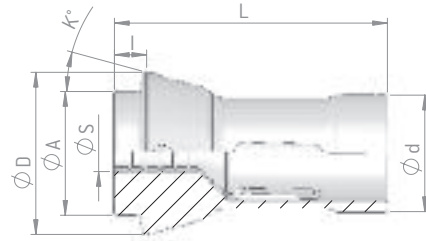
# DEAD LENGTH COLLETS SERIES 100



part no.	$\phi d$ (mm)	$\phi D$ (mm)	$\phi A$ (mm)	length l (mm)	length L (mm)	cone $\alpha$ (degree)	inside shape	clamping range (mm)	increments (mm)
171 E F 42	42	55	42	9	94	15	●	3,0 - 36,0	0,5
								36,5 - 38,0	0,5
							⬡	4,0 - 14,0	1,0
								15 & 16 & 18 & 20 & 21 & 23	
								25,0 - 31,0	1,0
								17,0 & 19,0 & 22,0 & 24,0	
■	4,0 - 14,0	1,0							
	15,0 - 26,0	1,0							
TF 43	43	53	46	10	92	16	●	3 - 38	1,0
								4 - 32	1,0
							■	4 - 27	1,0
173 E F 48	48	60	50	9	94	15	●	1,0	
								1,5 - 2,5	0,5
								3,0 - 42,0	0,5
								42,5 - 43,0	0,5
								4,0 - 5,5	0,5
							⬡	6,0	
								7,0 - 14,0	1,0
								17,0 & 19,0 & 22,0 & 24,0 & 27,0	
								15 & 16 & 18 & 20 & 21 & 23	
								25,0 & 26,0 & 28,0 & 29,0 & 31,0	
								33,0 - 35,0 & 37,0	1,0
							■	30,0 & 32,0 & 36,0	
								4,0 & 5,0	
								6,0	
								7,0 - 14,0	1,0
15,0 - 24,0 & 26,0	1,0								
25,0 & 27,0 - 30,0	1,0								

>> Table to be continued

# DEAD LENGTH COLLETS SERIES 100



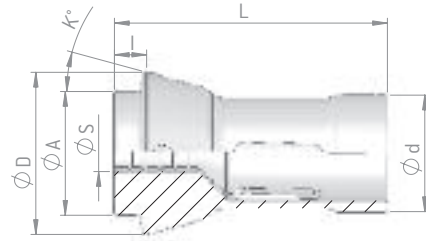
part no.	$\phi d$ (mm)	$\phi D$ (mm)	$\phi A$ (mm)	length l (mm)	length L (mm)	cone $\alpha$ (degree)	inside shape	clamping range (mm)	increments (mm)
TF48	48	60	50	9	94	15	●	1,0 - 43	
							⬡	4 - 37	
							■	4 - 30	
BS38 komplett	48	54	44	10	100	15	●	1,0 - 40	1,0
							⬡	5 - 34	1,0
							■	5 - 28	1,0
177E F58	58	70	60	9	94	15	●	4,0 - 9,0	1,0
								10,0 - 52,0	1,0
								8,0 - 12,0	1,0
							⬡	13,0 - 22,0	1,0
								23,0 - 27,0	1,0
								28,0 - 36,0	1,0
								37,0 - 42,0	1,0
								43,0 - 44,0	1,0
								8,0 - 12,0	1,0
							■	13,0 - 22,0	1,0
								23,0 - 27,0	1,0
								30,0 - 36,0	1,0

>> Table to be continued



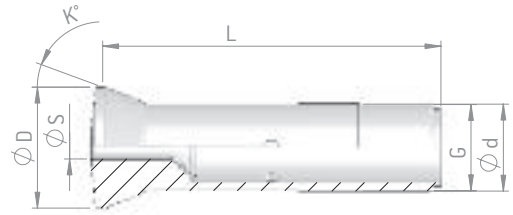
Try our collets sealed.

# DEAD LENGTH COLLETS SERIES 100



part no.	$\phi d$ (mm)	$\phi D$ (mm)	$\phi A$ (mm)	length l (mm)	length L (mm)	cone $\alpha$ (degree)	inside shape	clamping range (mm)	increments (mm)
185 E F 66	66	84	73	9	110	15	●	3,0 - 7,0	1,0
								8,0 - 60,0	1,0
								60,5 - 62,0	0,5
							short	61,0 - 65,0	1,0
							⬠	8,0 - 17,0	1,0
								19,0 & 22,0 & 24,0 & 27,0	
								7,0 & 18,0 & 20,0 & 21,0 & 23,0	
								25,0 & 26,0 & 28,0 & 29,0 & 31,0	
								38,0 & 41,0	
								30,0 & 32,0 & 36,0	
								33,0 - 35,0	1,0
								37,0 & 39,0 & 40,0	
								42,0 - 55,0	1,0
								■	7,0 - 14,0
							15,0 - 19,0		1,0
							21,0 & 23,0 & 24,0 & 26,0 & 32,0		
20,0 & 22,0 & 25,0 & 28,0									
27 & 29 & 30 & 31 & 33 & 34									
35,0 - 41,0	1,0								
190 E F 88	88	106			115	15	●	60,0 - 80,0	1,0
193 E F 90	90	107			130	15	●	20,0 - 80,0	1,0

# DRAW-IN COLLETS SERIES 300



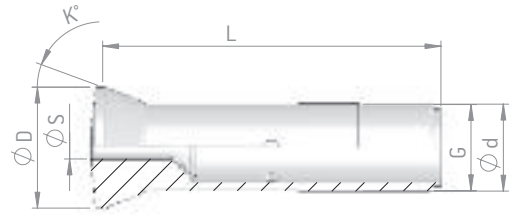
part no.	$\phi d$ (mm)	$\phi D$ (mm)	length L (mm)	cone $\alpha$ (degree)	thread G	inside shape	clamping range (mm)	increments (mm)
671 / 652	5	7	22,5	15	M 3,5 x 0,6	●	PR	PR
324 E	15	21,5	53	20	M 13 x 1	●	1,0	
							1,5 - 2,5	0,5
							3,0 - 13,0	0,5
358 E	23	32	82	20	M 21 x 1	●	0,5 - 0,9	0,1
							1,0	
							1,5 - 2,5	0,5
							3,0 - 20,0	0,5
							20,5 & 21,5	
						●	3,5	
							4,0 - 6,0	1,0
							4,5 - 6,5	1,0
●	7,0 - 14,0	1,0						
●	16,0 & 18,0							
359 E	23	32	90	20	Tr. 23 x 1,5	●	0,5 - 20,0	0,5
363 E	25	33,5	84	16	M 23 x 1	●	1,5 - 2,5	0,5
							3,0 - 22,0	0,5
366 E	28	36	102	18	Tr. 27 x 1/20"	●	PR	PR
							1,5 - 2,5	0,5
						●	3,0 - 23,0	0,5
367 E	28	38	100	20	Tr. 28 x 1,5	●	PR	PR
							1,5 - 2,5	0,5
							3,0 - 24,0	0,5
						●	PR	PR

PR = per request

>> Table to be continued

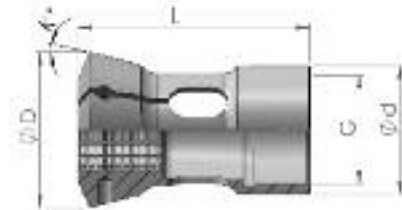
Custom solutions can be delivered for all draw-in collets.

# DRAW-IN COLLETS SERIES 300



part no.	$\phi d$ (mm)	$\phi D$ (mm)	length L (mm)	cone $\alpha$ (degree)	thread G	inside shape	clamping range (mm)	increments (mm)
385 E	31,75	37,5	83	10	outer thread: 31,45 x 1/20"	●	1,5 - 2,5	0,5
							3,0 - 26,0	1,0
						■	4,0	
							●	5,0 - 6,0
						■		7,0 - 16,0
							●	5,5
						17,0 & 19,0 & 22,0		
						18,0 & 20,0 & 21,0 & 23,0		
						■	25,0 & 26,0	
							17,0 & 19,0	
							18,0	
386 E	32	45	110	20	Tr. 32 x 1,5	●	1,0	
							1,5 - 2,5	0,5
							3,0 - 29,0	0,5
							29,5 & 30,0	
						●	PR	PR

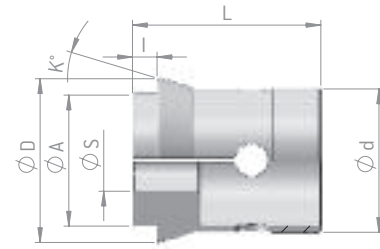
PR = per request



part no.	$\phi d$ (mm)	$\phi D$ (mm)	length L (mm)	cone $\alpha$ (degree)	thread G	inside shape	clamping range (mm)	increments (mm)
KDT 38	58	70,3	105	15	M50 x 1,5	●	8 - 44	1,0
B0385						●	10 - 36	1,0
						■	10 - 30	1,0



# PICK-UP COLLETS

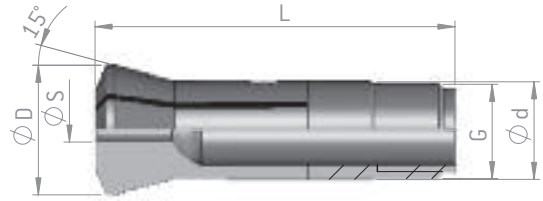


part no.	$\phi d$ (mm)	$\phi D$ (mm)	$\phi A$ (mm)	length l (mm)	length L (mm)	Type	Inside shape	clamping range (mm)	increments (mm)
75 - 81.1410	thread M 10 x 1	14	11	23	23	Gauthier	●	1,0 - 7,0	0,5
75 - 14.0498	thread M 12 x 1	18	12	23	23	Gauthier	●	1,0 - 10,0	0,5
M 105	12	14,5	10,5	6	21	Strohm	●	1,0 - 8,5	0,5
M 105 extended nose	12	14,5	10,5	variable	variable	Strohm	●	3,0 - 8,0	0,5
M 125	15	17	13	2	17	Strohm	●	1,0 - 12,0	0,5
M 125 extended nose	15	17	13	variable	variable	Strohm	●	1,0 - 12,0	0,5
694285	16	19	13	2,5	22	Traub	●	1,0 - 10,0	0,5
M 205	24	28	22	6	36	Strohm	●	2,5	
							●	3,0 - 20,0	0,5
							● ■	PR	PR
612	35	40	32	6	46	TNS 28	●	1,0 - 5,5	PR
							●	6,0 - 30,0	0,5
							● ■	PR	PR
612 M reinforced shaft	35	40	32	6	46	Manurhin K'MX	●	1,0 - 5,5	PR
							●	6,0 - 30,0	0,5
							● ■	PR	PR
719976	45	58			56	TNS 60	●	PR	1,0
721	46	54,75	48	6	65	TNS 30 / 42	●	1,0 - 7,5	PR
							●	8,0 - 42,0	1,0
							● ■	PR	PR
952	61,5	71,5	62	6	65	TNM 65	●	5,0 - 19,0	1,0
							●	20,0 - 56,0	1,0
							●	57,0 - 59,0	1,0
725070	71	85			79,5	TNS 65	●	8,0 - 65,0	1,0
722	44,4	55	42	8,5	55,5		●	3,0 - 7,0	1,0
							●	8,0 & 9,0	
							●	10,0 - 37,0	1,0

PR = per request

Custom solutions can be delivered for all pick-up collets.

# DRAW-IN COLLETS-SW



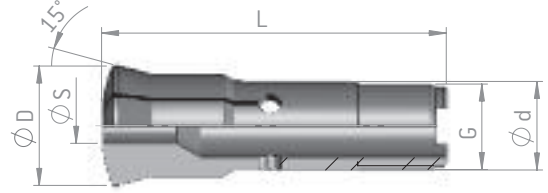
part no.	$\phi d$ (mm)	$\phi D$ (mm)	length L (mm)	thread G	inside shape	clamping range (mm)	increments (mm)
SW 20	20	26,3	73	$\phi 19,7 \times 1,666$ 45° / 5°	●	0,5 - 1,0	0,1
						1,5 - 2,5	0,5
						3,0 - 14,5	0,5
						14,5 - 16,0	0,5
					●	PR	PR
SW 25	25	33,7	97,6	$\phi 24,7 \times 1,693$ 45° / 5°	●	0,5 - 1,0	0,1
						1,5 - 2,5	0,5
						3,0 - 19,0	0,5
					●	PR	PR
SW 25 VB	25	33,7	112	$\phi 24,7 \times 1,693$ 45° / 5°	●	0,5 - 1,0	0,1
						1,5 - 2,5	0,5
						3,0 - 19,0	0,5
					●	PR	PR
SB 32	32	40	106	$\phi 25,7 \times 1,693$ 45° / 5°	●	3,0 - 23,5	0,5
						24 - 28,0	0,5
					●	PR	PR

PR = per request



Custom solutions can be delivered for all draw-in collets with extended nose.

# DRAW-IN COLLETS-HYDROMAT



part no.	$\phi d$ (mm)	$\phi D$ (mm)	length L (mm)	thread G	inside shape	clamping range (mm)	steps clamping length	increments (mm)
SHW 20	20	26,3	96,5	$\phi 19,7 \times 1,666$ 45° / 5°	●	1,0 - 3,0	31	0,1
						3,5 - 13,5		0,5
						14,0 - 20,0		0,5
						●	■	a.A. / PR
SHW 25	25	33,7	97,6	$\phi 24,7 \times 1,693$ 45° / 5°	●	1,0 - 3,0	31	0,1
						3,5 - 17,5		0,5
						18,0 - 25,0		0,5
						●	■	a.A. / PR
SHB 32	32	40	106	$\phi 29,7 \times 1,693$ 45° / 5°	●	3,0 - 23,5	44	0,5
						24,0 - 28,0		0,5
						●	■	a.A. / PR
SHB 32 / 45	32	53	122	$\phi 29,7 \times 1,693$ 45° / 5°	●	3,0 - 23,5	50	0,5
						24,0 - 41,0		0,5
						●	■	a.A. / PR
SHB 45	45	53	115	M 42 x 1,5	●	3,0 - 36,0	53	0,5
						36,5 - 41,0		0,5
						●	■	a.A. / PR

PR = per request

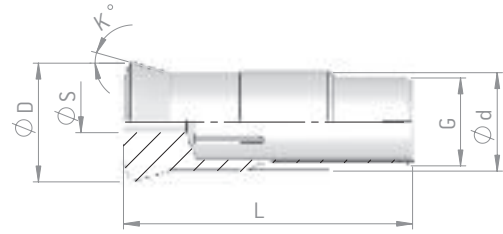


Custom solutions can be delivered for all draw-in collets-Hydromat.

All draw-in collets-Hydromat available in quick change version.



# ADJUSTABLE GUIDE BUSHINGS WITH CARBIDE INSERT



part no.	ø d (mm)	ø D (mm)	length L (mm)	cone α (degree)	thread G	inside shape	clamping range (mm)	increments (mm)
F 351	9	13	50	30	M 8 x 0,6	●	0,8 - 5,5	0,1
I 351	9	12,5	44	16	M 8 x 0,75	●	0,8 - 5,6	0,1
F 352	11	15	50	30	M 10 x 0,6	●	1,0 - 7,5	0,1
I 352	11	14,5	53	16	M 10 x 0,8	●	1,0 - 7,0	0,1
F 3001 / TD7	11	14,5	53	16	M 10 x 0,75	●	1,0 - 7,0	0,1
F 103	12	16	50	30	M 12 x 1	●	1,0 - 7,5	0,1
T 340	13	16	41,5	15	M 12,5 x 0,75	●	1,0 - 8,0	0,1
T 330	14	18	63	16	M 13 x 0,75	●	1,0 - 9,0	0,1
I 353	16	19,5	59	16	M 14 x 1	●	1,0 - 10,5	0,1
●						3,0 - 10,0	1,0	
■						3,0 - 6,0	1,0	
F 850	16	20	52	30	M 16 x 1	●	1,0 - 12,0	0,1
F 853	18	22	60	30	M 16 x 1	●	1,0 - 13,0	0,1
						●	4,0 - 13,0	1,0
						■	3,0 - 8,0	1,0
F 104	20	24	55	30	M 20 x 1	●	2,0 - 13,0	0,1
T 221 SNC15	21	24	57,5	12	M 18 x 1	●	3,0 - 15,0	0,5
						●	4,0 - 12,0	1,0
						■	3,0 - 8,0	1,0
I 354	22	29	68	16	M 19 x 1	●	2,0 - 15,0	0,5
						●	4,0 - 13,0	1,0
						■	3,0 - 10,0	1,0
F 391 TD20 R	22	29	68	16	M 22 x 1	●	3,0 - 18,0	0,5
						●	4,0 - 14,0	1,0
						■	3,0 - 12,0	1,0
F 605 0201	24	29,5	61	30	M 24 x 1	●	2,0 - 17,0	0,5
						●	4,0 - 15,0	1,0
						■	3,0 - 12,0	1,0
TD 26	26	29	77	16	M 25 x 1	●	2,0 - 20,0	0,5
						●	4,0 - 16,0	1,0
						■	3,0 - 13,0	1,0

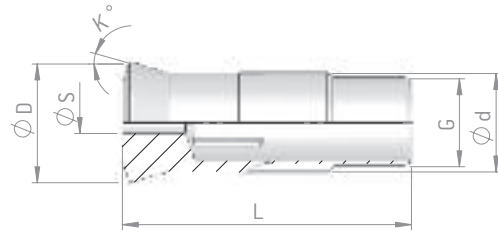
>> Table to be continued



Custom solutions can be delivered for all guide bushings.

All guide bushings available with enlarged guide area and oversize.

# ADJUSTABLE GUIDE BUSHINGS WITH CARBIDE INSERT



part no.	$\phi d$ (mm)	$\phi D$ (mm)	length L (mm)	cone $\alpha$ (degree)	thread G	inside shape	clamping range (mm)	increments (mm)
T 223	28	34	82	16	M 25 x 1	●	3,0 - 21,0	0,5
TD25 NS							22,0	
TD 255						●	3,0 - 17,0	1,0
						■	3,0 - 14,0	1,0
T 223	28	34	82	16	M 27 x 1	●	22,0	
I 357	28	38	81	30	M 25 x 1	●	3,0 - 21,0	0,5
TD25						●	4,0 - 17,0	1,0
						■	3,0 - 14,0	1,0
F 355	32	39	71	30	M 32 x 1	●	3,0 - 22,0	0,5
T 227	34	41	87,5	10	M 34 x 1	●	3,0 - 25,0	0,5
CD25						●	4,0 - 22,0	1,0
						■	3,0 - 15,0	1,0
F 854	40	48	71	30	M 36 x 1	●	3,0 - 26,0	1,0
F 105	40	48	71	30	M 40 x 1	●	3,0 - 26,0	1,0
T 229	42	49	82	16	M 40 x 1	●	4 - 32,0	1,0
TD32 S							33,0	
						●	4,0 - 27,0	1,0
						■	3,0 - 25,0	1,0
TD 32	42	48	82	20	M 40 x 1	●	4,0 - 32,0	1,0
							33,0	
						●	4,0 - 27,0	1,0
						■	3,0 - 25,0	
ML 36	44	51	82	16	M 42 x 1	●	3,0 - 35,0	1,0
ST 38 / STM38	48	54	82	16	M 46 x 1	●	3,0 - 38,0	1,0



All guide bushings also available with BL-coating.

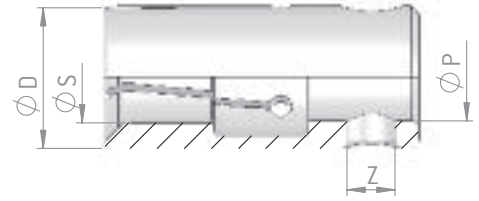


In S-Slot design.



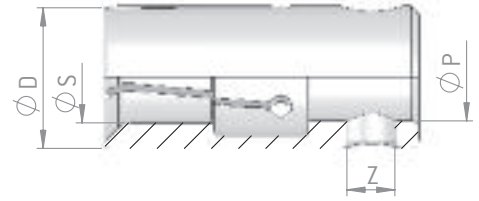
Guide bushing also in SB available.

# CAV - BAR FEED COLLETS



part no.	Channel	ø D (mm)	ø Z (mm)	length L (mm)	clamping range (mm)
CAV 7	7	7	M6x1L	40	1,5 - 5,9
CAV 10	10	10	M6x1L	40	2,0 - 8,5
CAV 12	12	12	M6x1L	40	8,5 - 10,5
CAV 15	15	15	10	55	2,99 - 13,87
CAV 17	17	17	10	55	13,87 - 15,97
CAV 19	19	19	10	55	15,97 - 16,99
CAV21	21	21	10	55	17 - 19
CAV25	25	25	16	76	5,08 - 22,22
CAV32	32	25/32	16	76	15,5 - 29,5
CAV34	34	25/34	16	76	19 - 31

# BAR FEED COLLETS FOR BAR LOADERS

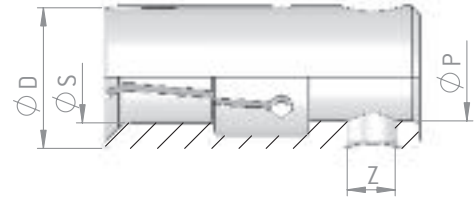


part no.	Channel	ø D (mm)	ø Z (mm)	ø P (mm)	length L (mm)	clamping range (mm)	increments (mm)
200 E	D 5	5 / 5,5		M 4	37	1,0 - 1,4	0,1
						1,5 - 4,5	0,1
208 E	D 7	7 / 7,5		M 5	37	1,0 - 1,4	0,1
						1,5 - 5,9	0,1
						6,0 - 6,2	0,1
Bechler	D 7	7		M 4	30	PR	PR
210 E	D 10	10	4	7 H 7	40	1,0 - 1,5	0,5
						2,0 - 3,5	0,5
						4,0 - 8,5	0,5
						9,0 - 10,0	0,5
Bechler	D 10	10		M 5	26	2,0 - 8,5	0,5
212 E	D 12	12	4	8 H 7	40	3,0 - 3,5	0,5
						4,0 - 9,5	0,5
						10,0 - 11,0	0,5
213 E	D 13	13	4	8 H 7	40	2,0 - 4,0	0,5
						4,5 - 12,0	0,5
203 E	D 15	15	6	11 H 7	40	3,0 - 3,5	0,5
						4,0 - 13,0	0,5
						13,5 - 14,0	0,5
SHK 16	D 16	16	6	11 H 7	40	3,0 - 3,5	0,5
						4,0 - 13,0	0,5
						13,5 - 15,0	0,5
218 E	D 18	18	6	11 H 7	40	3,0 - 4,5	0,5
						5,0 - 16,0	0,5
225 E	D 20	20	8	14 H 7	65	4,0 - 5,5	0,5
						6,0 - 18,0	0,5
						18,5 - 19,0	0,5
SHK 21	D 21	21	8	14 H 7	65	PR	PR
SHK 22	D 22	22	8	14 H 7	65	PR	PR
SHK 23	D 23	23	8	14 H 7	65	PR	PR
222 E	D 25	25	8	20 H 7	65	4,0 - 5,5	0,5
						6,0 - 23,0	0,5
						23,5 - 24,0	0,5
227 E	D 28	28	8	20 H 7	65	3,0 - 7,5	0,5
						8,0 - 25,0	1,0
						25,5 - 26,5	0,5

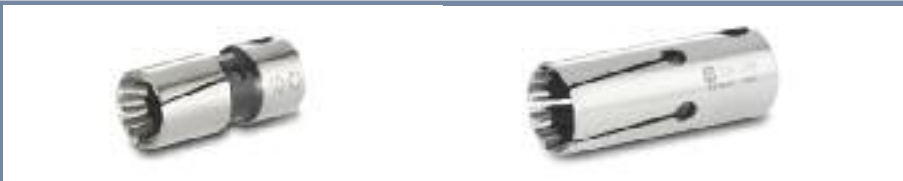
PR = per request

>> Table to be continued

# BAR FEED COLLETS FOR BAR LOADERS



part no.	Channel	ø D (mm)	ø Z (mm)	ø P (mm)	length L (mm)	clamping range (mm)	increments (mm)
SHK 30	D 30	30	8	20 H 7	65	6,0 - 9,5	0,5
						10,0 - 25,5	0,5
						26,0 - 28,0	0,5
SHK 32	D 32	32	8	20 H 7	65	6,0 - 9,5	0,5
						10,0 - 28,5	0,5
						29,0 - 30,0	0,5
SHK 34	D 34	34	8	20 H 7	65	10,0 - 32,0	0,5
SHK 36	D 36	36	8	20 H 7	65	8,0 - 9,5	0,5
						10,0 - 30,0	0,5
						30,5 - 33,0	0,5
						4,0 - 10,0	1,0
						4,5 - 10,5	1,0
						11,0 - 24,0	1,0
						11,5 - 21,5	1,0



Additional cost for bar feed collets   from channel D 10 - D 36

# BAR FEED COLLETS FOR LNS / TRYTON

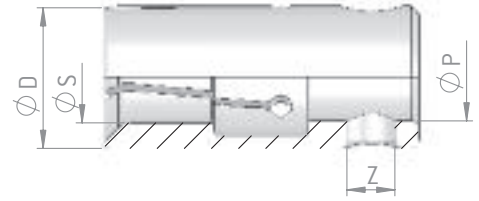
part no.	ø D (mm)	thread G	length L (mm)	clamping range (mm)	increments (mm)
6 TR	6	M 4	30	1,0 - 1,5	1,0
				2,0 - 5,0	0,5
7 TR	7	M 4	30	1,0 - 2,0	1,0
				3,0 - 5,0	1,0
12 TR	12	M 6	30	4,0 - 10,0	1,0



Larger bore diameter also available in closed design.

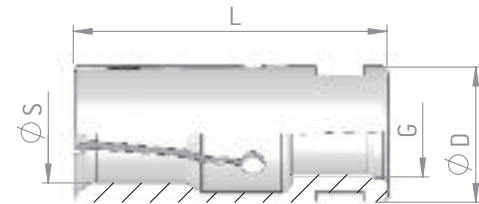


# TRAUB BAR FEED COLLETS



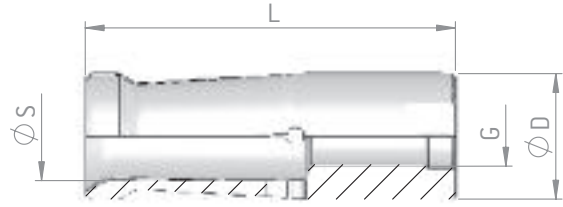
part no.	channel	ø D (mm)	thread G	length L (mm)	clamping range (mm)	increments (mm)
12 G	D 12	11	M 8 x 1	50	3,0 - 10,0	1,0
16 G	D 16	14	M 10 x 1	65	3,0 - 13,0	1,0
20 G	D 20	19	M 12 x 1	65	3,0 - 18,0	1,0
23 G	D 23	21	M 12 x 1	65	5,0 - 18,0	1,0
26 G	D 26	24	M 17 x 1	65	4,0 - 22,5	1,0
30 G	D 30	28	M 17 x 1	65	3,0 - 26,0	1,0
33 G	D 33	32	M 17 x 1	65	10,0 - 30,0	1,0
36 G	D 36	34	M 25 x 1,5	65	4,0 - 32,0	1,0

# CUCCHI BAR FEED COLLETS



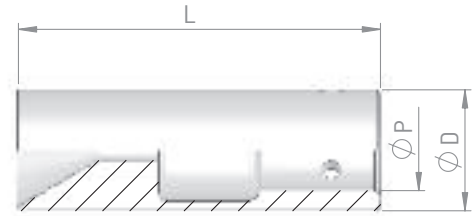
part no.	ø D (mm)	thread G	length L (mm)	clamping range (mm)
PB 28	28	M 18 x 1,5 L	65	10,0 - 26,0
PB 29	29	M 18 x 1,5 L	65	10,0 - 27,0
PB 30	30	M 18 x 1,5 L	65	10,0 - 28,0
PB 35	35	M 18 x 1,5 L	70	10,0 - 33,0
PB 36	36	M 18 x 1,5 L	70	10,0 - 34,0
PB 38	38	M 25 x 1,5 L	70	10,0 - 36,0
PB 41	41	M 25 x 1,5 L	70	20,0 - 39,0
PB 42	42	M 25 x 1,5	70	20,0 - 40,0

# BAR FEED COLLETS EDGE & IEMCA STYLE



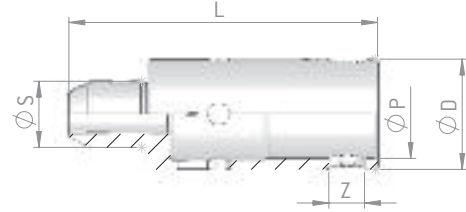
part no.	channel	ø D (mm)	thread G	length L (mm)	clamping range (mm)	increments (mm)
SE 7,5	D 7,5	7,5	M 5 x 0,5	40	2,0 - 6,5	0,5
SE 10	D 10	10	M 6 x 0,75	40	2,0 - 8,0	0,5
SE 12	D 12	12	M 7 x 0,75	42	2,0 - 10,0	0,5
SE 15	D 15	15	M 8 x 1	42	4,0 - 13,0	0,5
SE 16	D 16	16	M 8 x 1	42	7,0 - 14,0	0,5
SE 18	D 18	18	M 8 x 1	42	12,5 - 16,0	0,5
SE 20	D 20	20	M 10 x 1	59	4,0 - 18,0	0,5
SE 22	D 20	20	M 10 x 1	59	14,0 - 20,0	0,5
SE 23	D 23	23	M 10 x 1	59	14,0 - 21,0	0,5
SE 25	D 25	25	M 10 x 1	59	17,0 - 23,0	0,5
SE 27	D 27	27	M 10 x 1	59	19,0 - 25,0	0,5
SE 30	D 30	30	M 10 x 1	59	3,0 - 28,0	0,5
SE 32	D 32	32	M 25 x 1,5	78	25,0 - 30,0	0,5
SE 34	D 34	34	M 25 x 1,5	78	8,0 - 32,0	0,5
SE 35	D 35	35	M 25 x 1,5	78	20,0 - 33,0	0,5
SE 37	D 37	37	M 25 x 1,5	78	31,0 - 35,0	0,5
SE 38	D 38	38	M 25 x 1,5	78	31,0 - 35,0	0,5
SE 40	D 40	40	M 25 x 1,5	78	20,0 - 37,0	0,5
SE 42	D 42	42	M 25 x 1,5	78	20,0 - 40,0	0,5
SE 45	D 45	45	M 25 x 1,5	80	20,0 - 42,0	0,5
SE 46	D 46	46	M 25 x 1,5	80	20,0 - 44,0	0,5
SE 50	D 50	50	M 25 x 1,5	80	44,0 - 47,0	0,5
SE 51	D 51	51	M 25 x 1,5	80	43,0 - 48,0	0,5
SE 55	D 55	55	M 25 x 1,5	80	20,0 - 54,0	0,5
SE 56	D 56	56	M 25 x 1,5	80	20,0 - 54,0	0,5
SE 58	D 58	58	M 25 x 1,5	80	20,0 - 54,0	0,5
SE 60	D 60	60	M 25 x 1,5	80	20,0 - 57,0	0,5
SE 65	D 65	65	M 25 x 1,5	80	56,0 - 63,0	0,5
SE 70	D 70	70	M 25 x 1,5	80	60,0 - 68,0	0,5
SE 75	D 75	75	M 25 x 1,5	80	67,0 - 72,0	0,5

# GUIDE SLEEVES FOR BAR LOADERS (VKK)



part no.	ø D (mm)	ø P (mm)	length L (mm)
VKK 10	10,3	7 H 7	40
VKK 12	12,3	8 H 7	40
VKK 15	15,3	11 H 7	40
VKK 20	20,3	14 H 7	65
VKK 25	25,3	20 H 7	65 / 90
VKK 28	28,3	20 H 7	65 / 90
VKK 30	30,3	20 H 7	65 / 90
VKK 32	32,3	20 H 7	65 / 90
VKK 36	36,3	20 H 7	65 / 90
VKK 38	38,3	20 H 7	65 / 90
VKK 40	40,3	20 H 7	65 / 90
VKK 42	42,3	20 H 7	90
VKK 45	45,3	20 H 7	90
VKK 50	50,3	20 H 7	90
VKK 60	60,3	20 H 7	90
VKK 65	65,3	20 H 7	90
VKK 67 up to 100			

# INSIDE CLAMPING SLEEVES SHK



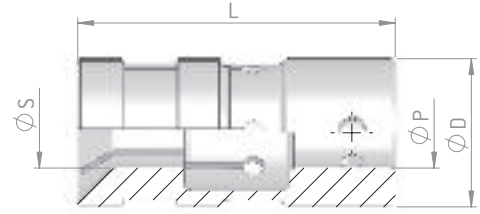
part no.	ø D (mm)	ø Z (mm)	ø P (mm)	length L (mm)	increments (mm)
SHKI 7	7		M 5	37	1,0
SHKI 10	10	4	7	40	1,0
SHKI 12	12	4	8	40	1,0
SHKI 15	15	6	11	40	1,0
SHKI 18	18	6	11	40	1,0
SHKI 20	20	8	14	65	1,0
SHKI 25	25	8	20	65	1,0
SHKI 28 up to SHKI 50	28 - 50	8	20	PR	PR

PR = per request



**Inside clamping sleeves can also be delivered sealed.**

# FMB TURBO-BAR FEED COLLETS



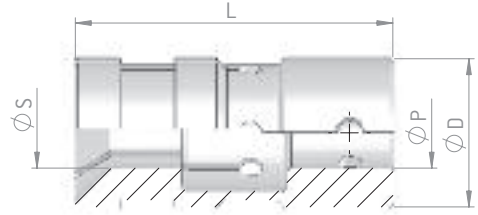
part no.	channel	o D (mm)	o P (mm)	length L (mm)	clamping range (mm)	increments (mm)
SHT 25	D 25	25	20 H 7	90	4,0 - 7,5	0,5
					8,0 - 20,0	0,5
					20,5 - 23,0	0,5
SHT 28	D 28	28	20 H 7	90	PR	PR
					PR	PR
SHT 30	D 30	30	20 H 7	90	5,0 - 8,0	1,0
					9,0 - 27,0	0,5
					27,5 - 28,0	0,5
SHT 32	D 32	32	20 H 7	90	5,0 - 8,5	0,5
					9,0 - 28,0	0,5
					28,5 - 30,0	0,5
SHT 34	D 34	34	20 H 7	90	PR	PR
SHT 35	D 35	35	20 H 7	90	PR	PR
SHT 36	D 36	36	20 H 7	90	6,0 - 9,0	1,0
					10,0 - 30,0	0,5
					30,5 - 33,0	0,5
					33,5 - 34,0	0,5
SHT 38	D 38	38	20 H 7	90	PR	PR
SHT 40	D 40	40	20 H 7	90	10,0 - 36,0	1,0
					36,5 - 38,0	PR
SHT 42	D 42	42	20 H 7	90	6,0 - 10,0	1,0
					11,0 - 39,0	0,5
					39,5 - 40,0	0,5
					40,5	
SHT 44	D 44	44	20 H 7	90	PR	PR
SHT 45	D 45	45	20 H 7	90	6,0 - 11,0	1,0
					12,0 - 42,0	1,0
					42,5 - 43,0	0,5
SHT 50	D 50	50	20 H 7	90	6,0 - 12,0	1,0
					13,0 - 44,0	1,0
					45,0 - 47,0	1,0
					47,5 - 48,0	0,5
SHT 54	D 54	54	20 H 7	90	PR	PR
SHT 55	D 55	55	20 H 7	90	PR	PR

PR = per request

# FMB TURBO-BAR FEED COLLETS



Sample collet with spring for reinforcement



part no.	channel	o D (mm)	o P (mm)	length L (mm)	clamping range (mm)	increments (mm)
SHT 60	D 60	60	20 H 7	90	10,0 - 15,0	1,0
					16,0 - 55,0	1,0
					56,0 - 57,0	1,0
					58,0	
SHT 63	D 63	63	20 H 7	90	PR	PR
SHT 65	D 65	65	20 H 7	90	8,0 - 15,0	1,0
					16,0 - 60,0	1,0
					61,0 - 63,0	1,0
SHT 70	D 70	70	20 H 7	90	PR	PR
SHT 75	D 75	75	20 / 35 H 7	90	PR	PR
SHT 80	D 80	80	35 H 7	90	40,0 - 76,0	1,0
SHT 90	D 90	90	35 H 7	90	50,0 - 84,0	1,0
SHT 100	D 100	100	35 H 7	110	60,0 - 95,0	1,0
Additional cost for turbo-bar feed collets					4,0 - 10,0	1,0
					11,0 - 20,0	1,0
					21,0 - 30,0	1,0
					31,0 - 40,0	1,0
					from 41,0	PR

PR = per request

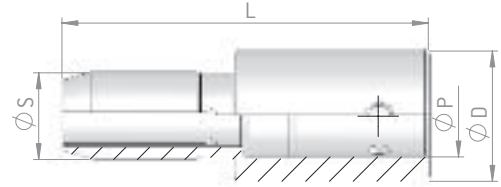
It is recommended to use turbo-bar feed collets from size D 40 with a spring.

All turbo-bar feed collets can be delivered in XT-version for XT-bar loaders.



Larger bore diameter also available in closed design.

# INSIDE CLAMPING SLEEVES TURBO



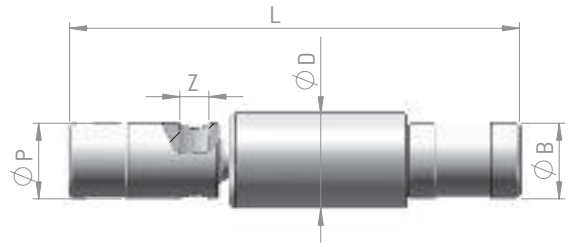
part no.	channel	ø D (mm)	ø P (mm)	length L (mm)	clamping range (mm)	increments (mm)
SHTI 25	D 25	25	20 H 7	90	10,0 - 20,0	1,0
					21,0 - 23,0	1,0
SHTI 28	D 28	28	20 H 7	90	PR	PR
SHTI 30	D 30	30	20 H 7	90	PR	PR
SHTI 32	D 32	32	20 H 7	90	PR	PR
SHTI 34	D 34	34	20 H 7	90	PR	PR
SHTI 35	D 35	35	20 H 7	90	PR	PR
SHTI 36	D 36	36	20 H 7	90	PR	PR
SHTI 38	D 38	38	20 H 7	90	PR	PR
SHTI 40	D 40	40	20 H 7	90	PR	PR
SHTI 42	D 42	42	20 H 7	90	PR	PR
SHTI 44	D 44	44	20 H 7	90	PR	PR
SHTI 45	D 45	45	20 H 7	90	PR	PR
SHTI 50	D 50	50	20 H 7	90	PR	PR
SHTI 54	D 54	54	20 H 7	90	PR	PR
SHTI 58	D 58	58	20 H 7	90	PR	PR
SHTI 60	D 60	60	20 H 7	90	PR	PR
SHTI 63	D 63	63	20 H 7	90	PR	PR
SHTI 65	D 65	65	20 H 7	90	PR	PR
SHTI 70	D 70	70	20 H 7	90	PR	PR
SHTI 75	D 75	75	20 / 35 H 7	90	PR	PR
SHTI 80	D 80	80	35 H 7	90	PR	PR
SHTI 90	D 90	90	35 H 7	90	PR	PR
SHTI 100	D 100	100	35 H 7	110	PR	PR

PR = per request



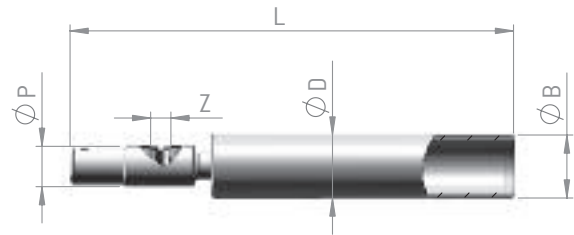
**Inside clamping sleeves turbo can be delivered sealed.**

## ROTATING INSERTS FOR BAR LOADERS



part no.	manufacturer	ø D (mm)	ø B (mm)	ø Z (mm)	ø P (mm)	entire length (mm)
D 10	FMB, lemca, Irco	10,5	8	4	7	100
D 12	FMB, lemca, Irco	12,5	8	4	8	100
D 13	FMB, lemca, Irco	13,5	8	4	8	100
D 15	FMB, lemca, Irco, Traub	15	12	6	11	100
D 18	FMB, lemca, Irco, Traub	18	12	6	11	100
D 20	FMB, lemca, Irco, Traub	20	17	8	14	116
D 22	FMB, lemca, Irco, Traub	22	17	8	14	116
D 25	FMB, lemca, Irco, Traub	25	20	8	20	119
D 30	FMB, lemca, Irco, Traub	30	20	8	20	119
D 32	FMB, lemca, Irco, Traub	32	20	8	20	119
D 36	FMB, lemca, Irco, Traub	36	20	8	20	119

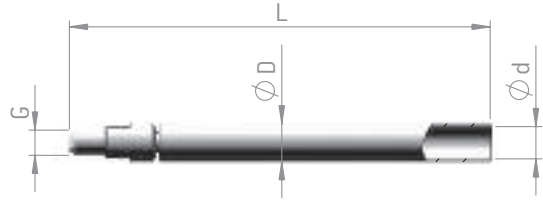
## ROTATING INSERTS FOR BAR LOADERS



part no.	manufacturer	ø D (mm)	ø B (mm)	ø P (mm)	ø Z (mm)	entire length (mm)
D 10	Traub	10,5	9	7	4	88
D 12	Traub	12,5	11	8	4	88

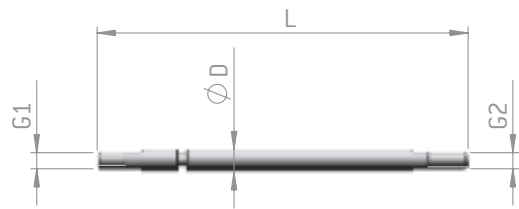


## ROTATING INSERTS FOR BAR LOADERS



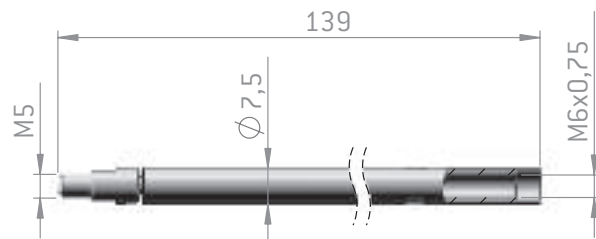
part no.	manufacturer	o D (mm)	thread G	o d (mm)	entire length (mm)
D 5	FMB, Traub	5,5	M 4	4,5	75
D 7	FMB, Traub	7,5	M 5	6,4	82

## ROTATING INSERTS FOR BAR LOADERS EDGE STYLE



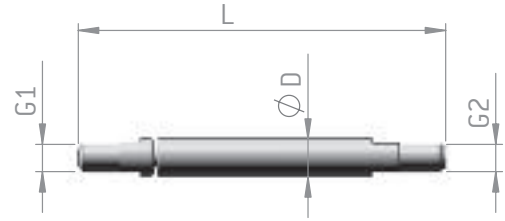
part no.	manufacturer	o D (mm)	thread G 1	thread G 2	entire length (mm)
D 5	lemca	5,5	M 4	M 4	90

## ROTATING INSERTS IEMCA BAR LOADERS FOR SCHLENKER SYSTEM



part no.	manufacturer	o D (mm)	entire length (mm)
D 7	lemca - Schlenker adapter	7,5	139

## ROTATING INSERTS FOR BAR LOADERS



part no.	manufacturer	ø D (mm)	thread G 1	thread G 2	entire length (mm)
ERT 0550	Tornos	5,5	M 3	M 3	54
ERT 0700	Tornos	7	M 4	M 5	47
ERT 0750	Tornos	7,5	M 4	M 5	47
ERT 0850	Tornos	8,5	M 5	M 5	47
ERT 1050	Tornos	10,5	M 6	M 6	52
ERT 1350	Tornos	13,5	M 6	M 6	72

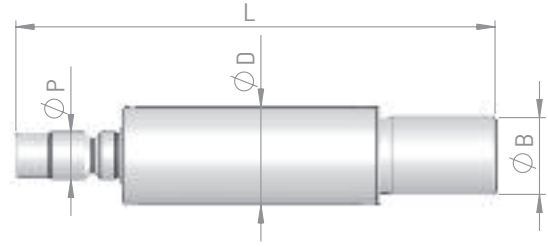
## ROTATING INSERTS FOR BAR LOADERS

part no.	manufacturer	ø D (mm)	thread G 1	thread G 2	entire length (mm)
7 TR	LNS / Tryton	7	M 5	M 4	63
12 TR	LNS / Tryton	12	M 6	M 6	72

## ROTATING INSERTS FOR BAR LOADERS

part no.	manufacturer	ø D (mm)	thread G 1	thread G 2	entire length (mm)
7 B	Bechler	7	M 5	M 5	84
10 B [A]	Bechler	10	M 5	M 5	84
10 B [B]	Bechler	10	M 5	M 5	96

# FMB TURBO ROTATING INSERTS



part no.	$\phi P$ (mm)	$\phi D$ (mm)	$\phi B$ (mm)	entirw length (mm)
D 25	20	25	20	196
D 30	20	30	25	196
D 32	20	32	25	196
D 34	20	34	30	196
D 36	20	36	30	196
D 38	20	38	30	196
D 40	20	40	33	206
D 42	20	42	33	206
D 44	20	44	33	206
D 45	20	45	33	206
D 50	20	50	42	206
D 54	20	54	42	206
D 55	20	55	42	206
D 58	20	58	51	231
D 60	20	60	51	231
D 63	20	63	51	231
D 65	20	65	51	231
D 70	20	70	51	231
D 75	20 / 35	75	65	231
D 80	35	80	65	231
D 90	35	90	65	231
D 100	35	100	82	231

# EDGE <sup>000</sup> TECHNOLOGIES

Edge Technologies  
11600 Adie Road  
Maryland Heights, MO 63043  
Phone: (314) 692-8388  
Fax: (314) 692-5152  
[www.edgetechnologies.com](http://www.edgetechnologies.com)

