



2025 工具系统 TOOLING SYSTEM



公司简介

About GESAC

厦门金鹭特种合金有限公司，成立于1989年，是一家中外合资的国家级高新技术企业，是国有上市公司厦门钨业股份有限公司的骨干成员。公司致力于高品质钨粉末材料、硬质合金、精密切削工具等钨系列产品的研发、生产，以及行业专业解决方案的提供，是知名的钨粉末、硬质合金及切削工具供应商。

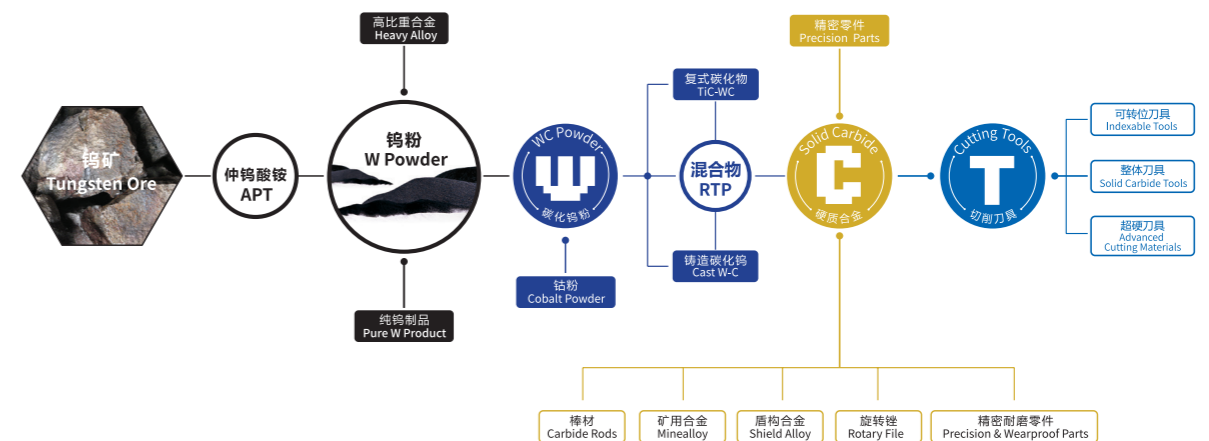
凭借完整钨产业链的产品集成技术研发，以及求实创新的管理理念，厦门金鹭始终保持着强劲的发展势头，为全球用户提供高性价比的钨粉末产品和服务，为现代工业领域解决高硬度、耐高温、耐磨损问题，提供了优良的产品和完善的解决方案，客户遍布全球，享誉海内外。

公司现有员工3000多名，拥有5个生产基地，4个境外销售公司和1个企业技术中心，独立承担并完成多项“国家科技支撑计划项目”，“国家科技重大专项”，“国家火炬计划项目”，“国家重点新产品”开发项目及省市重点研究课题，被评为“战略性新兴产业骨干企业”、“创新型企业”、“先进技术企业”；荣获包括国家科技进步二等奖等多项专利与奖项；切削工具累计获得发明专利、实用新型专利及外观专利等400多项。

Xiamen Golden Egret Special Alloy Co. Ltd., established in 1989, is a Sino-foreign joint venture state-level high-tech enterprise and a key member of the state-owned listed company Xiamen Tungsten Co., Ltd. The company is committed to the research and development and production of high-quality tungsten powder materials, cemented carbide, precision cutting tools and other tungsten products, as well as the provision of professional solutions in the industry. It is a well-known supplier of tungsten powder, cemented carbide and cutting tools.

With the product integration technology research and development of the complete tungsten industry chain, as well as the realistic and innovative management concept, Golden Egret has always maintained a strong development momentum, providing cost-effective tungsten powder products and services for global users, and solving high hardness, resistance to High temperature, wear resistance, provide excellent products and perfect solutions, customers all over the world, well-known at home and abroad.

The company has more than 3,000 employees, 5 production bases, 4 overseas sales companies and 1 enterprise technology center. Planning Project", "National Key New Product" development project and provincial and municipal key research topics, and was rated as "Strategic Emerging Industry Backbone Enterprise", "Innovative Enterprise", "Advanced Technology Enterprise"; won the first prize including National Science and Technology Progress Award, the second prize of National Science and Technology Progress Award and many other patents and awards; cutting tools have obtained more than 400 invention patents, utility model patents and appearance patents.



目录

CONTENTS

BT工具系统 BT Tooling System — A

| | |
|--|----|
| 液压刀柄 Hydraulic Chuck | 06 |
| 热装刀柄 Shrink Fit Holder | 08 |
| ER弹性筒夹刀柄 ER Spring Collet Chuck | 12 |
| 强力筒夹刀柄 Power Milling Chuck For Heavy Duty | 14 |
| 侧固式刀柄 Side-lock Holder | 15 |
| 有扁尾莫氏圆锥孔刀柄 Morse Taper Holders with Tang | 16 |
| 无扁尾莫氏圆锥孔刀柄 Morse Taper Holders without Tang | 17 |
| 面铣刀刀柄 Face Mill Holder | 18 |
| 三面刃铣刀刀柄 Solting Cutter Holders | 20 |
| 一体式微补偿攻牙刀柄 Tapping Chuck | 21 |

HSK工具系统 HSK Tooling System — B

| | |
|--|----|
| 液压刀柄 Hydraulic Chuck | 24 |
| 热装刀柄 Shrink Fit Holder | 25 |
| ER弹性筒夹刀柄 ER Spring Collet Chuck | 29 |
| 强力筒夹刀柄 Power Milling Chuck For Heavy Duty | 31 |
| 侧固式刀柄 Side-lock Holder | 32 |
| 侧固式刀柄 (2°) Side-lock Holder (2°) | 33 |
| 有扁尾莫氏圆锥孔刀柄 Morse Taper Holders with Tang | 34 |
| 面铣刀刀柄 Face Mill Holder | 35 |
| 三面刃铣刀刀柄 Solting Cutter Holders | 36 |
| 一体式微补偿攻牙刀柄 Tapping Chuck | 37 |

配件 Accessories — C

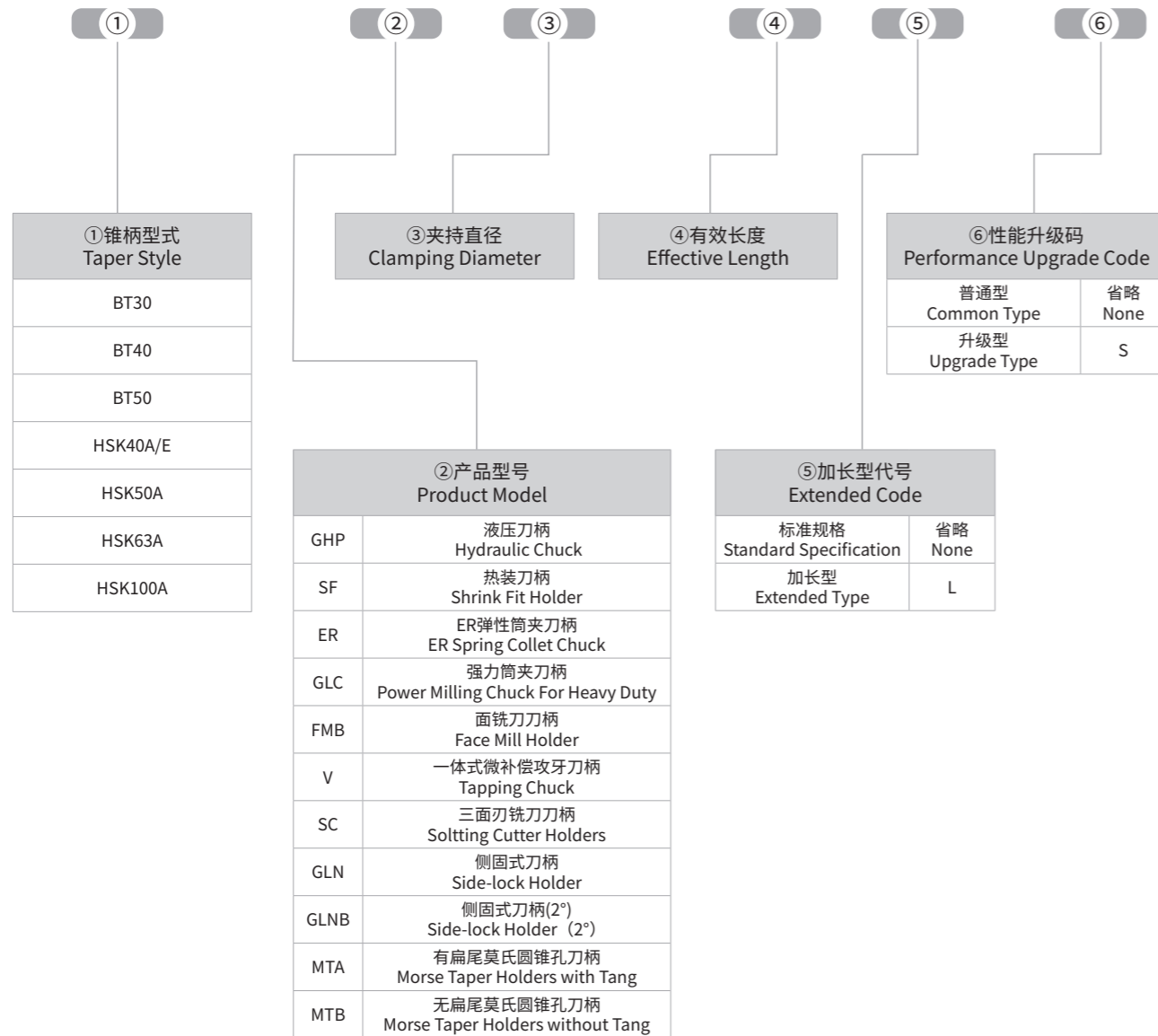
| | |
|------------------|----|
| 延长杆 Extenders | 39 |
| 筒夹 Collets | 42 |
| 螺帽 Nuts | 48 |
| 扳手 Wrenches | 49 |
| 拉钉 Pull Studs | 51 |

附录 Appendix — D

| | |
|--------------------------------|----|
| 热缩刀柄使用注意事项 Announcements | 54 |
| 刀柄尺寸图 Tool Holder Dimension | 55 |

S
T
I
N
G
I
N
F
O
R
M
A
T
I
O
N

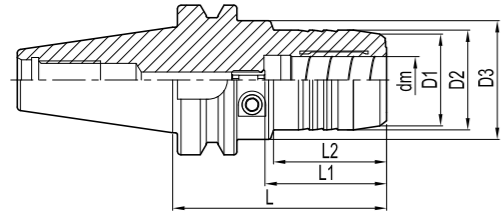
BT30 — SF 06 — 200 L — S



BT 工具系统
BT TOOLING SYSTEM

液压刀柄
Hydraulic Chuck

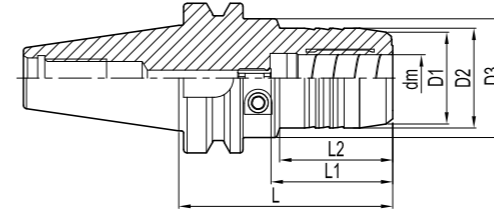
GHP



| 订货号 Ordering Code | 尺寸 Dimension (mm) | | | | | | | 筒夹 Collets | 重量 Weight(kg) | |
|----------------------|----------------------|----|----|----|-----|------|------|---------------|------------------|-----|
| | dm | D1 | D2 | D3 | L | L1 | L2 | | | |
| BT30- | GHP06-50.8-S | 6 | 23 | 26 | 46 | 50.8 | 37 | 15.6 | - | 0.6 |
| | GHP08-50.8-S | 8 | 25 | 28 | 46 | 50.8 | 37 | 15.6 | - | 0.6 |
| | GHP10-50.8-S | 10 | 27 | 30 | 46 | 50.8 | 41 | 15.6 | - | 0.6 |
| | GHP12-50.8-S | 12 | 29 | 32 | 46 | 50.8 | 46 | 15.6 | OD12 | 0.6 |
| | GHP14-90-S | 14 | 30 | 34 | 50 | 90 | 46 | 40 | - | 0.9 |
| | GHP16-90-S | 16 | 34 | 38 | 50 | 90 | 49 | 50 | - | 1 |
| | GHP18-90-S | 18 | 36 | 40 | 50 | 90 | 49 | 47 | - | 1 |
| | GHP20-90-S | 20 | 38 | 42 | 50 | 90 | 51 | 50 | OD20 | 1 |
| | GHP06-65-S | 6 | 22 | 26 | 50 | 65 | 37 | 18 | - | 1.2 |
| GHP06-90-S | 6 | 22 | 26 | 50 | 90 | 37 | 43 | - | 1.4 | |
| GHP06-140-S | 6 | 22 | 26 | 50 | 140 | 37 | 93 | - | 1.6 | |
| GHP08-65-S | 8 | 24 | 28 | 50 | 65 | 37 | 20 | - | 1.3 | |
| GHP08-90-S | 8 | 24 | 28 | 50 | 90 | 37 | 44.5 | - | 1.4 | |
| GHP08-140-S | 8 | 24 | 28 | 50 | 140 | 37 | 94 | - | 1.6 | |
| GHP10-65-S | 10 | 26 | 30 | 50 | 65 | 41 | 21 | - | 1.3 | |
| GHP10-90-S | 10 | 26 | 30 | 50 | 90 | 41 | 44.5 | - | 1.4 | |
| GHP10-140-S | 10 | 26 | 30 | 50 | 140 | 41 | 94 | - | 1.7 | |
| GHP12-65-S | 12 | 28 | 32 | 53 | 65 | 46 | 22 | OD12 | 1.3 | |
| GHP12-90-S | 12 | 28 | 32 | 50 | 90 | 46 | 44.5 | OD12 | 1.4 | |
| GHP12-140-S | 12 | 28 | 32 | 50 | 140 | 46 | 95 | OD12 | 1.8 | |
| GHP14-65-S | 14 | 30 | 34 | 56 | 65 | 46 | 22 | - | 1.3 | |
| GHP14-90-S | 14 | 30 | 34 | 50 | 90 | 46 | 44.5 | - | 1.5 | |
| GHP14-140-S | 14 | 30 | 34 | 50 | 140 | 46 | 95 | - | 1.8 | |
| GHP16-65-S | 16 | 34 | 38 | 56 | 65 | 49 | 20 | - | 1.4 | |
| GHP16-90-S | 16 | 34 | 38 | 50 | 90 | 49 | 47.5 | - | 1.5 | |
| GHP16-140-S | 16 | 34 | 38 | 50 | 140 | 49 | 96 | - | 1.9 | |
| GHP18-75-S | 18 | 36 | 40 | 60 | 75 | 49 | 30 | - | 1.4 | |
| GHP18-90-S | 18 | 36 | 40 | 50 | 90 | 49 | 47.5 | - | 1.5 | |
| GHP18-140-S | 18 | 36 | 40 | 50 | 140 | 49 | 97 | - | 1.9 | |
| GHP20-75-S | 20 | 38 | 42 | 75 | 75 | 51 | 48 | OD20 | 1.5 | |
| GHP20-90-S | 20 | 38 | 42 | 50 | 90 | 51 | 47.5 | OD20 | 1.6 | |
| GHP20-140-S | 20 | 38 | 42 | 50 | 140 | 51 | 97 | OD20 | 2.1 | |
| GHP25-100-S | 25 | 53 | 57 | 63 | 100 | 57 | 57 | - | 2.2 | |
| GHP25-135-S | 25 | 53 | 57 | 63 | 135 | 57 | 92 | - | 2.9 | |
| GHP32-83-S | 32 | 60 | 63 | 80 | 83 | 61 | 25.5 | OD32 | 2 | |

液压刀柄
Hydraulic Chuck

GHP



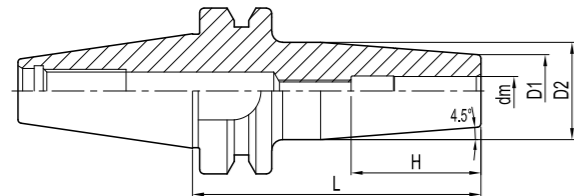
| 订货号 Ordering Code | 尺寸 Dimension (mm) | | | | | | | 筒夹 Collets | 重量 Weight(kg) | |
|----------------------|----------------------|----|----|----|------|-----|----|---------------|------------------|-----|
| | dm | D1 | D2 | D3 | L | L1 | L2 | | | |
| BT40- | GHP32-135-S | 32 | 60 | 63 | 75 | 135 | 61 | 85 | OD32 | 3.2 |
| BT50- | GHP06-90-S | 6 | 22 | 26 | 50 | 90 | 37 | 29.5 | - | 4 |
| | GHP06-120-S | 6 | 22 | 26 | 50 | 120 | 37 | 34 | - | 4.1 |
| | GHP06-140-S | 6 | 22 | 26 | 50 | 140 | 37 | 34 | - | 4.3 |
| | GHP08-90-S | 8 | 24 | 28 | 50 | 90 | 37 | 30 | - | 3.9 |
| | GHP08-120-S | 8 | 24 | 28 | 50 | 120 | 37 | 34 | - | 4.1 |
| | GHP08-140-S | 8 | 24 | 28 | 50 | 140 | 37 | 34 | - | 4.2 |
| | GHP10-90-S | 10 | 26 | 30 | 50 | 90 | 41 | 31 | - | 4 |
| | GHP10-120-S | 10 | 26 | 30 | 50 | 120 | 41 | 34 | - | 4.2 |
| | GHP10-140-S | 10 | 26 | 30 | 50 | 140 | 41 | 34 | - | 4.3 |
| | GHP12-90-S | 12 | 28 | 32 | 50 | 90 | 46 | 34 | OD12 | 4 |
| | GHP12-120-S | 12 | 28 | 32 | 50 | 120 | 46 | 65 | OD12 | 4.2 |
| | GHP12-140-S | 12 | 28 | 32 | 50 | 140 | 46 | 95 | OD12 | 4.3 |
| | GHP14-90-S | 14 | 30 | 34 | 44.5 | 90 | 46 | 34 | - | 4 |
| | GHP14-120-S | 14 | 30 | 34 | 50 | 120 | 46 | 64 | - | 4.1 |
| | GHP14-140-S | 14 | 30 | 34 | 50 | 140 | 46 | 84 | - | 4.3 |
| | GHP16-90-S | 16 | 34 | 38 | 44.5 | 90 | 49 | 34 | - | 4 |
| | GHP16-120-S | 16 | 34 | 38 | 50 | 120 | 49 | 65 | - | 4.3 |
| | GHP16-140-S | 16 | 34 | 38 | 50 | 140 | 49 | 85 | - | 4.4 |
| | GHP18-90-S | 18 | 36 | 40 | 44.5 | 90 | 49 | 34 | - | 4.1 |
| | GHP18-120-S | 18 | 36 | 40 | 50 | 120 | 49 | 62 | - | 4.3 |
| | GHP18-140-S | 18 | 36 | 40 | 50 | 140 | 49 | 82 | - | 4.5 |
| | GHP20-90-S | 20 | 38 | 42 | 44.5 | 90 | 51 | 34 | OD20 | 4 |
| | GHP20-120-S | 20 | 38 | 42 | 50 | 120 | 51 | 65 | OD20 | 4.3 |
| | GHP20-140-S | 20 | 38 | 42 | 50 | 140 | 51 | 85 | OD20 | 4.6 |
| | GHP25-105-S | 25 | 40 | 44 | 72 | 105 | 61 | 49 | - | 4.8 |
| | GHP25-150-S | 25 | 40 | 44 | 72 | 150 | 61 | 93 | - | 5.6 |
| | GHP32-90-S | 32 | 60 | 64 | 72 | 90 | 61 | 34 | OD32 | 4.6 |
| | GHP32-150-S | 32 | 60 | 64 | 72 | 150 | 61 | 92 | OD32 | 6 |

注：扳手和筒夹需单独订购。
Notice: Wrench and collet shall be ordered separately.

| 附件Accessories | dm=6 | dm=8 | dm=10 | dm=12 | dm=16 | dm=20 | dm=25 | dm=32 |
|---------------|-----------|------|-------|-------|-------|-------|-----------|-------|
| 扳手Hex Wrench | TH05T-L-S | | | | | | TH06T-L-S | |

热装刀柄
Shrink Fit Holder

SF



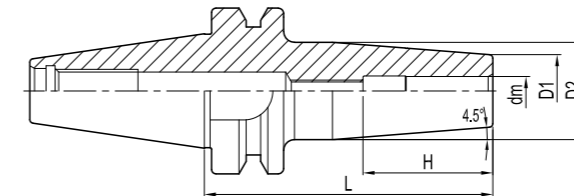
柄径公差
h6



| 订货号 Ordering Code | 尺寸 Dimension (mm) | | | | | 重量 Weight(kg) |
|----------------------|----------------------|----|----|-----|----|------------------|
| | dm | D1 | D2 | L | H | |
| SF03-60-S | 3 | 10 | - | 60 | - | 0.4 |
| SF04-60-S | 4 | 10 | - | 60 | - | 0.4 |
| SF05-60-S | 5 | 10 | - | 60 | - | 0.4 |
| SF06-80-S | 6 | 21 | 27 | 80 | 36 | 0.6 |
| SF06-105-S | 6 | 21 | 27 | 105 | 36 | 0.7 |
| SF06-120-S | 6 | 21 | 27 | 120 | 36 | 0.7 |
| SF08-80-S | 8 | 21 | 27 | 80 | 36 | 0.6 |
| SF08-105-S | 8 | 21 | 27 | 105 | 36 | 0.8 |
| SF08-120-S | 8 | 21 | 32 | 120 | 36 | 0.9 |
| SF10-80-S | 10 | 24 | 32 | 80 | 42 | 0.6 |
| SF10-105-S | 10 | 24 | 32 | 105 | 42 | 0.8 |
| SF10-120-S | 10 | 24 | 32 | 120 | 42 | 0.9 |
| SF12-80-S | 12 | 24 | 32 | 80 | 47 | 0.6 |
| SF12-105-S | 12 | 24 | 32 | 105 | 47 | 0.8 |
| SF12-120-S | 12 | 24 | 34 | 120 | 47 | 0.9 |
| SF14-80-S | 14 | 27 | 34 | 80 | 47 | 0.7 |
| SF14-105-S | 14 | 27 | 34 | 105 | 47 | 0.8 |
| SF14-120-S | 14 | 27 | 34 | 120 | 47 | 0.9 |
| SF16-80-S | 16 | 27 | 34 | 80 | 50 | 0.7 |
| SF16-105-S | 16 | 27 | 34 | 105 | 50 | 0.8 |
| SF16-120-S | 16 | 27 | 34 | 120 | 50 | 0.9 |
| SF18-80-S | 18 | 33 | 42 | 80 | 50 | 0.8 |
| SF20-90-S | 20 | 33 | 42 | 90 | 52 | 0.9 |
| SF03-80-S | 3 | 10 | - | 80 | - | 1.0 |
| SF04-80-S | 4 | 10 | - | 80 | - | 1.0 |
| SF05-80-S | 5 | 10 | - | 80 | - | 1.0 |
| SF06-90-S | 6 | 21 | 27 | 90 | 36 | 1.2 |
| SF06-120-S | 6 | 21 | 27 | 120 | 36 | 1.3 |
| SF06-160-S | 6 | 21 | 32 | 160 | 36 | 1.6 |
| SF06-200-S | 6 | 21 | 32 | 200 | 36 | 1.9 |
| SF08-90-S | 8 | 21 | 27 | 90 | 36 | 1.2 |
| SF08-120-S | 8 | 21 | 27 | 120 | 36 | 1.3 |
| SF08-160-S | 8 | 21 | 32 | 160 | 36 | 1.6 |
| SF08-200-S | 8 | 21 | 32 | 200 | 36 | 1.9 |
| SF10-90-S | 10 | 24 | 32 | 90 | 42 | 1.2 |

热装刀柄
Shrink Fit Holder

SF



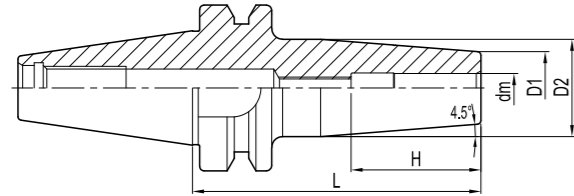
柄径公差
h6



| 订货号 Ordering Code | 尺寸 Dimension (mm) | | | | | 重量 Weight(kg) |
|----------------------|----------------------|----|----|-----|----|------------------|
| | dm | D1 | D2 | L | H | |
| SF10-120-S | 10 | 24 | 32 | 120 | 42 | 1.3 |
| SF10-160-S | 10 | 24 | 34 | 160 | 42 | 1.6 |
| SF10-200-S | 10 | 24 | 34 | 200 | 42 | 1.9 |
| SF12-90-S | 12 | 24 | 32 | 90 | 47 | 1.2 |
| SF12-120-S | 12 | 24 | 32 | 120 | 47 | 1.3 |
| SF12-160-S | 12 | 24 | 34 | 160 | 47 | 1.6 |
| SF12-200-S | 12 | 24 | 34 | 200 | 47 | 1.9 |
| SF14-90-S | 14 | 27 | 34 | 90 | 47 | 1.3 |
| SF14-120-S | 14 | 27 | 34 | 120 | 47 | 1.4 |
| SF14-160-S | 14 | 27 | 42 | 160 | 47 | 1.8 |
| SF14-200-S | 14 | 27 | 42 | 200 | 47 | 2.3 |
| SF16-90-S | 16 | 27 | 34 | 90 | 50 | 1.2 |
| SF16-120-S | 16 | 27 | 34 | 120 | 50 | 1.3 |
| SF16-160-S | 16 | 27 | 42 | 160 | 50 | 1.8 |
| SF16-200-S | 16 | 27 | 42 | 200 | 50 | 2.2 |
| SF18-90-S | 18 | 33 | 42 | 90 | 50 | 1.5 |
| SF18-120-S | 18 | 33 | 42 | 120 | 50 | 1.6 |
| SF18-160-S | 18 | 33 | 51 | 160 | 50 | 2.2 |
| SF18-200-S | 18 | 33 | 51 | 200 | 50 | 2.8 |
| SF20-90-S | 20 | 33 | 42 | 90 | 52 | 1.3 |
| SF20-120-S | 20 | 33 | 42 | 120 | 52 | 1.6 |
| SF20-160-S | 20 | 33 | 51 | 160 | 52 | 2.1 |
| SF20-200-S | 20 | 33 | 51 | 200 | 52 | 2.7 |
| SF25-100-S | 25 | 44 | 53 | 100 | 58 | 1.8 |
| SF25-120-S | 25 | 44 | 53 | 120 | 58 | 1.7 |
| SF25-160-S | 25 | 44 | 60 | 160 | 58 | 2.2 |
| SF25-200-S | 25 | 44 | 60 | 200 | 58 | 3.1 |
| SF32-100-S | 32 | 44 | 53 | 100 | 58 | 1.6 |
| SF32-130-S | 32 | 44 | 53 | 130 | 58 | 2.1 |
| SF32-160-S | 32 | 44 | 60 | 160 | 58 | 2.6 |
| SF06-100-S | 6 | 21 | 27 | 100 | 36 | 3.7 |
| SF06-120-S | 6 | 21 | 27 | 120 | 36 | 3.8 |
| SF06-160-S | 6 | 21 | 32 | 160 | 36 | 4.1 |
| SF06-200-S | 6 | 21 | 32 | 200 | 36 | 4.4 |

热装刀柄
Shrink Fit Holder

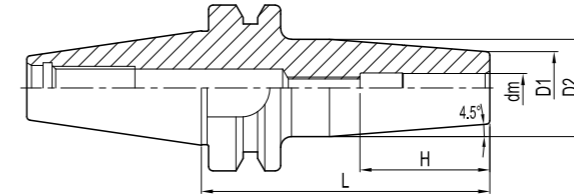
SF



| 订货号 Ordering Code | 尺寸 Dimension (mm) | | | | | 重量 Weight(kg) |
|----------------------|----------------------|----|----|-----|----|------------------|
| | dm | D1 | D2 | L | H | |
| SF08-100-S | 8 | 21 | 27 | 100 | 36 | 3.7 |
| SF08-120-S | 8 | 21 | 27 | 120 | 36 | 3.8 |
| SF08-160-S | 8 | 21 | 32 | 160 | 36 | 4.1 |
| SF08-200-S | 8 | 21 | 32 | 200 | 36 | 4.4 |
| SF10-100-S | 10 | 24 | 32 | 90 | 42 | 3.8 |
| SF10-120-S | 10 | 24 | 32 | 120 | 42 | 3.9 |
| SF10-160-S | 10 | 24 | 34 | 160 | 42 | 4.2 |
| SF10-200-S | 10 | 24 | 34 | 200 | 42 | 4.5 |
| SF12-100-S | 12 | 24 | 32 | 90 | 47 | 3.8 |
| SF12-120-S | 12 | 24 | 32 | 120 | 47 | 3.9 |
| SF12-160-S | 12 | 24 | 34 | 160 | 47 | 4.2 |
| SF12-200-S | 12 | 24 | 34 | 200 | 47 | 4.5 |
| SF14-100-S | 14 | 27 | 34 | 90 | 47 | 3.9 |
| SF14-120-S | 14 | 27 | 34 | 120 | 47 | 4 |
| SF14-160-S | 14 | 27 | 42 | 160 | 47 | 4.4 |
| SF14-200-S | 14 | 27 | 42 | 200 | 47 | 4.9 |
| SF16-100-S | 16 | 27 | 34 | 90 | 50 | 3.8 |
| SF16-120-S | 16 | 27 | 34 | 120 | 50 | 3.9 |
| SF16-160-S | 16 | 27 | 42 | 160 | 50 | 4.4 |
| SF16-200-S | 16 | 27 | 42 | 200 | 50 | 4.8 |
| SF18-100-S | 18 | 33 | 42 | 90 | 50 | 4.1 |
| SF18-120-S | 18 | 33 | 42 | 120 | 50 | 4.2 |
| SF18-160-S | 18 | 33 | 51 | 160 | 50 | 4.8 |
| SF18-200-S | 18 | 33 | 51 | 200 | 50 | 5.4 |
| SF20-100-S | 20 | 33 | 42 | 90 | 52 | 3.9 |
| SF20-120-S | 20 | 33 | 42 | 120 | 52 | 4.2 |
| SF20-160-S | 20 | 33 | 51 | 160 | 52 | 4.7 |
| SF20-200-S | 20 | 33 | 51 | 200 | 52 | 5.3 |
| SF25-110-S | 25 | 44 | 53 | 110 | 58 | 4.4 |
| SF25-135-S | 25 | 44 | 60 | 135 | 58 | 4.3 |
| SF25-160-S | 25 | 44 | 60 | 160 | 58 | 4.8 |
| SF25-200-S | 25 | 44 | 60 | 200 | 58 | 5.7 |
| SF32-110-S | 32 | 44 | 53 | 110 | 58 | 4.2 |
| SF32-135-S | 32 | 44 | 60 | 135 | 58 | 4.7 |

热装刀柄
Shrink Fit Holder

SF



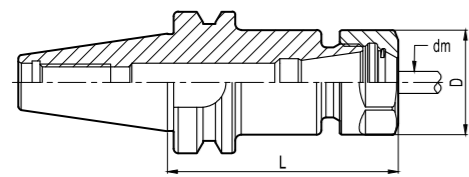
| 订货号 Ordering Code | 尺寸 Dimension (mm) | | | | | 重量 Weight(kg) | |
|----------------------|----------------------|----|----|----|-----|------------------|-----|
| | dm | D1 | D2 | L | H | | |
| BT50- | SF32-160-S | 32 | 44 | 60 | 160 | 58 | 5.2 |
| | SF32-200-S | 32 | 44 | 60 | 200 | 58 | 6.1 |

特点
Feature

| | |
|-------------------|-------------------------|
| 动平衡设定 Balanced | 3D处径向跳动 Runout (X3D) |
| G2.5; 25,000 rpm | 0.003 mm |

ER弹性筒夹刀柄
ER Spring Collet Chuck

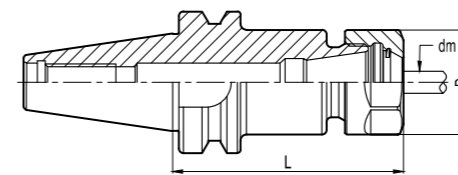
ER



| 订货号 Ordering Code | 尺寸 Dimension (mm) | | | 重量 Weight(kg) | |
|----------------------|----------------------|-----------|-------|------------------|-----|
| | dm | D | L | | |
| BT30- | ER11-60-S | 0.5~7 | 19 | 60 | 0.4 |
| | ER11-90-S | 0.5~7 | 19 | 90 | 0.5 |
| | ER16-60-S | 0.5~10 | 28 | 60 | 0.5 |
| | ER16-90-S | 0.5~10 | 28 | 90 | 0.6 |
| | ER16-120-S | 0.5~10 | 28 | 120 | 0.7 |
| | ER20-60-S | 1.0~13 | 34 | 60 | 0.5 |
| | ER20-90-S | 1.0~13 | 34 | 90 | 0.7 |
| | ER20-120-S | 1.0~13 | 34 | 120 | 0.9 |
| | ER25-60-S | 1.0~16 | 42 | 60 | 0.7 |
| | ER25-90-S | 1.0~16 | 42 | 90 | 0.9 |
| | ER25-120-S | 1.0~16 | 42 | 120 | 1.2 |
| | ER32-60-S | 2.0~20 | 50 | 60 | 0.6 |
| | ER32-90-S | 2.0~20 | 50 | 90 | 0.9 |
| | BT40- | ER11-70-S | 0.5~7 | 19 | 70 |
| ER11-120-S | | 0.5~7 | 19 | 120 | 1.1 |
| ER16-70-S | | 0.5~10 | 28 | 70 | 1.1 |
| ER16-100-S | | 0.5~10 | 28 | 100 | 1.2 |
| ER16-120-S | | 0.5~10 | 28 | 120 | 1.3 |
| ER16-150-S | | 0.5~10 | 28 | 150 | 1.4 |
| ER20-80-S | | 1.0~13 | 34 | 80 | 1.2 |
| ER20-100-S | | 1.0~13 | 34 | 100 | 1.3 |
| ER20-120-S | | 1.0~13 | 34 | 120 | 1.4 |
| ER20-150-S | | 1.0~13 | 34 | 150 | 1.7 |
| ER25-80-S | | 1.0~16 | 42 | 80 | 1.3 |
| ER25-100-S | | 1.0~16 | 42 | 100 | 1.5 |
| ER25-120-S | | 1.0~16 | 42 | 120 | 1.7 |
| ER25-150-S | | 1.0~16 | 42 | 150 | 2 |
| ER32-60-S | | 2.0~20 | 50 | 60 | 1.1 |
| ER32-100-S | | 2.0~20 | 50 | 100 | 1.7 |
| ER32-150-S | | 2.0~20 | 50 | 150 | 2.4 |
| ER40-80-S | | 3.0~26 | 63 | 80 | 1.5 |
| ER40-100-S | | 3.0~26 | 63 | 100 | 1.9 |
| ER40-120-S | | 3.0~26 | 63 | 120 | 2.3 |

ER弹性筒夹刀柄
ER Spring Collet Chuck

ER

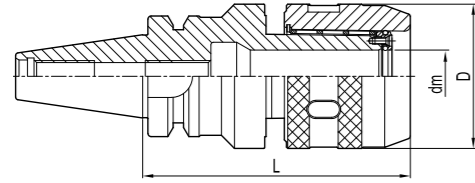


| 订货号 Ordering Code | 尺寸 Dimension (mm) | | | 重量 Weight(kg) | |
|----------------------|----------------------|--------|----|------------------|-----|
| | dm | D | L | | |
| BT40- | ER40-150-S | 3.0~26 | 63 | 150 | 2.9 |
| | ER16-80-S | 0.5~10 | 28 | 80 | 3.7 |
| BT50- | ER16-100-S | 0.5~10 | 28 | 100 | 3.8 |
| | ER16-120-S | 0.5~10 | 28 | 120 | 3.8 |
| | ER16-165-S | 0.5~10 | 28 | 165 | 4 |
| | ER20-80-S | 1.0~13 | 34 | 80 | 3.7 |
| | ER20-100-S | 1.0~13 | 34 | 100 | 3.8 |
| | ER20-135-S | 1.0~13 | 34 | 135 | 4 |
| | ER20-165-S | 1.0~13 | 34 | 165 | 4.2 |
| | ER20-200-S | 1.0~13 | 34 | 200 | 4.4 |
| | ER20-250-S | 1.0~13 | 34 | 250 | 4.7 |
| | ER25-80-S | 1.0~16 | 42 | 80 | 3.8 |
| | ER25-100-S | 1.0~16 | 42 | 100 | 3.9 |
| | ER25-120-S | 1.0~16 | 42 | 120 | 4.1 |
| | ER25-165-S | 1.0~16 | 42 | 165 | 4.5 |
| | ER25-200-S | 1.0~16 | 42 | 200 | 4.9 |
| | ER25-250-S | 1.0~16 | 42 | 250 | 5.3 |
| | ER32-90-S | 2.0~20 | 50 | 90 | 3.9 |
| | ER32-100-S | 2.0~20 | 50 | 100 | 4 |
| | ER32-120-S | 2.0~20 | 50 | 120 | 4.3 |
| | ER32-165-S | 2.0~20 | 50 | 165 | 4.9 |
| | ER32-200-S | 2.0~20 | 50 | 200 | 5.4 |
| | ER32-250-S | 2.0~20 | 50 | 250 | 6.3 |
| | ER40-100-S | 3.0~26 | 63 | 100 | 4.3 |
| | ER40-120-S | 3.0~26 | 63 | 120 | 4.8 |
| | ER40-165-S | 3.0~26 | 63 | 165 | 5.9 |
| | ER40-200-S | 3.0~26 | 63 | 200 | 6.7 |

注：筒夹与扳手需单独另购
Notice: Collets and wrenches shall be ordered separately.

强力筒夹刀柄
Power Milling Chuck For Heavy Duty

GLC

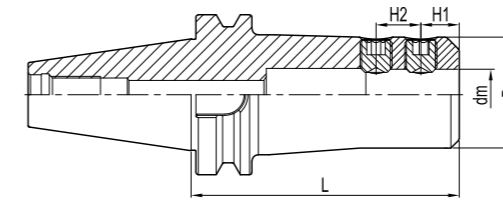


| 订货号 Ordering Code | 尺寸 Dimension (mm) | | | 筒夹 Collets | 重量 Weight(kg) |
|----------------------|----------------------|----|------|---------------|------------------|
| | dm | D | L | | |
| BT30- GLC20-95-S | 20 | 52 | 95 | GC20 | 1.4 |
| BT40- | GLC20-80-S | 20 | 52 | GC20 | 1.9 |
| | GLC20-95-S | 20 | 52 | GC20 | 1.9 |
| | GLC20-120-S | 20 | 52 | GC20 | 2.3 |
| BT40- | GLC32-105-S | 32 | 69 | GC32 | 2.6 |
| | GLC32-135-S | 32 | 69 | GC32 | 3.6 |
| BT50- | GLC20-105-S | 20 | 52 | GC20 | 4.4 |
| | GLC20-135-S | 20 | 52 | GC20 | 5 |
| | GLC25-110-S | 25 | 60 | GC25 | 4.6 |
| | GLC25-135-S | 25 | 60 | GC25 | 5.3 |
| | GLC32-110-S | 32 | 69 | GC32 | 5.1 |
| | GLC32-135-S | 32 | 69 | GC32 | 5.8 |
| | GLC32-165-S | 32 | 69 | GC32 | 6.7 |
| | GLC32-200-S | 32 | 69 | GC32 | 7.8 |
| | GLC42-110-S | 42 | 86 | GC42 | 5.7 |
| | GLC42-135-S | 42 | 86 | GC42 | 6.9 |
| GLC42-165-S | 42 | 86 | GC42 | 8.1 | |

注：筒夹与扳手需单独另购
Notice: Collets and wrenches shall be ordered separately.

侧固式刀柄
Side-lock Holder

GLN



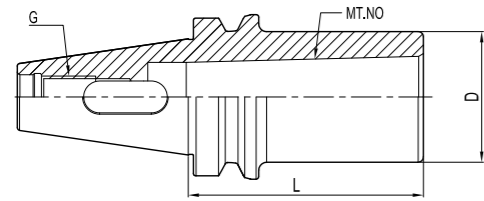
| 订货号 Ordering Code | 尺寸 Dimension (mm) | | | | | 侧固螺钉 Screws | 重量 Weight(kg) | |
|----------------------|----------------------|----|-----|-----|----|----------------|------------------|------|
| | dm | D | L | H1 | H2 | | | |
| BT30- | GLN16-60-S | 16 | 46 | 60 | 24 | - | STCM140160-S | 0.79 |
| | GLN20-80-S | 20 | 52 | 80 | 25 | - | STCM160160-S | 1.04 |
| BT40- | GLN16-65-S | 16 | 48 | 65 | 24 | - | STCM140160-S | 1.35 |
| | GLN20-75-S | 20 | 52 | 75 | 25 | - | STCM160160-S | 1.54 |
| | GLN25-105-S | 25 | 65 | 105 | 24 | 25 | STCM180160-S | 2.5 |
| BT50- | GLN32-110-S | 32 | 72 | 110 | 24 | 28 | STCM200160-S | 2.84 |
| | GLN16-100-S | 16 | 48 | 100 | 24 | - | STCM140160-S | 4.21 |
| | GLN20-75-S | 20 | 52 | 75 | 25 | - | STCM160160-S | 3.95 |
| | GLN20-100-S | 20 | 52 | 100 | 25 | - | STCM160160-S | 4.28 |
| | GLN25-115-S | 25 | 65 | 115 | 24 | 25 | STCM180200-S | 5.06 |
| | GLN25-150L-S | 25 | 65 | 150 | 24 | 25 | STCM180200-S | 5.89 |
| | GLN32-115-S | 32 | 72 | 115 | 24 | 28 | STCM200200-S | 5.28 |
| | GLN32-150L-S | 32 | 72 | 150 | 24 | 28 | STCM200200-S | 6.39 |
| | GLN40-115-S | 40 | 90 | 115 | 30 | 32 | STCM200250-S | 6.18 |
| | GLN50-125-S | 50 | 100 | 125 | 35 | 35 | STCM240250-S | 6.94 |

注：筒夹与扳手需单独另购
Notice: Collets and wrenches shall be ordered separately.

●标准库存Stock ○需预定Available upon Order

有扁尾莫氏圆锥孔刀柄
Morse Taper Holder with Tang

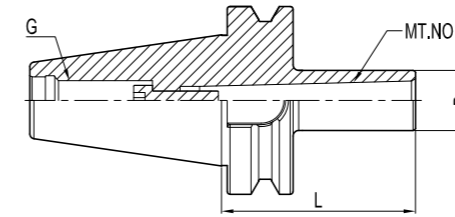
MTA



| 订货号 Ordering Code | | 尺寸 Dimension (mm) | | | | 重量 Weight(kg) |
|----------------------|------------|----------------------|-----|----|-----|------------------|
| | | MT | L | D | G | |
| BT30- | MTA1-45-S | 1 | 45 | 25 | M12 | 0.39 |
| | MTA2-60-S | 2 | 60 | 32 | M12 | 0.46 |
| | MTA3-80-S | 3 | 80 | 40 | M12 | 0.60 |
| BT40- | MTA1-45-S | 1 | 45 | 25 | M16 | 0.96 |
| | MTA1-120-S | 1 | 120 | 25 | M16 | 1.27 |
| | MTA2-45-S | 2 | 45 | 32 | M16 | 0.96 |
| | MTA2-120-S | 2 | 120 | 32 | M16 | 1.41 |
| | MTA3-75-S | 3 | 75 | 40 | M16 | 1.15 |
| | MTA3-135-S | 3 | 135 | 40 | M16 | 1.72 |
| | MTA4-90-S | 4 | 90 | 50 | M16 | 1.33 |
| BT50- | MTA1-45-S | 1 | 45 | 25 | M24 | 3.50 |
| | MTA1-120-S | 1 | 120 | 25 | M24 | 3.86 |
| | MTA2-45-S | 2 | 45 | 32 | M24 | 3.44 |
| | MTA2-135-S | 2 | 135 | 32 | M24 | 4.06 |
| | MTA2-180-S | 2 | 180 | 32 | M24 | 4.36 |
| | MTA3-45-S | 3 | 45 | 40 | M24 | 3.99 |
| | MTA3-150-S | 3 | 150 | 40 | M24 | 4.39 |
| | MTA3-180-S | 3 | 180 | 40 | M24 | 4.69 |
| | MTA4-75-S | 4 | 75 | 50 | M24 | 3.36 |
| | MTA4-180-S | 4 | 180 | 50 | M24 | 3.66 |
| | MTA5-105-S | 5 | 105 | 70 | M24 | 4.08 |

无扁尾莫氏圆锥孔刀柄
Morse Taper Holder without Tang

MTB

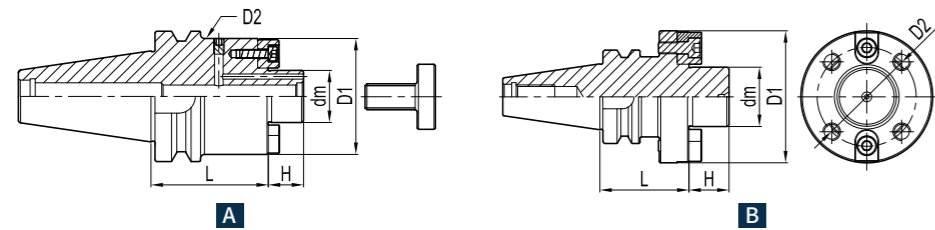


| 订货号 Ordering Code | | 尺寸 Dimension (mm) | | | | 重量 Weight(kg) |
|----------------------|------------|----------------------|-----|----|-----|------------------|
| | | MT | L | D | G | |
| BT40- | MTB1-45-S | 1 | 45 | 25 | M16 | 1.01 |
| | MTB2-60-S | 2 | 60 | 32 | M16 | 1.09 |
| | MTB3-75-S | 3 | 75 | 40 | M16 | 1.22 |
| | MTB4-90-S | 4 | 90 | 50 | M16 | 1.26 |
| BT50- | MTB1-45-S | 1 | 45 | 25 | M24 | 3.54 |
| | MTB2-45-S | 2 | 45 | 32 | M24 | 3.56 |
| | MTB3-60-S | 3 | 60 | 40 | M24 | 3.61 |
| | MTB4-75-S | 4 | 75 | 50 | M24 | 3.73 |
| | MTB5-120-S | 5 | 120 | 65 | M24 | 4.30 |

注：报价时不含拉紧拉钉。
Notice: Tension screw is not included.

面铣刀刀柄
Face Mill Holder

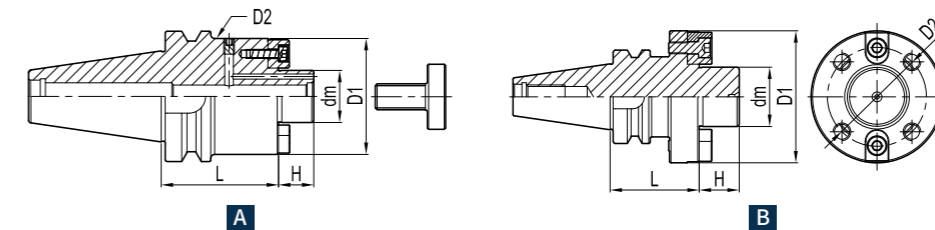
FMB



| 订货号 Ordering Code | 图示 Figure | 尺寸 Dimension (mm) | | | | | 压紧螺钉 Screw | 重量 Weight(kg) | | |
|----------------------|---------------|----------------------|----|----|------|-----|---------------|------------------|--------------|-----|
| | | dm | D1 | D2 | L | H | | | | |
| BT30- | FMB16C-60-S | A | 16 | 34 | - | 60 | 17 | SCAM080300-S | 0.7 | |
| | FMB22C-45-S | A | 22 | 42 | - | 45 | 19 | SCAM100300-S | 0.7 | |
| | FMB27C-45-S | A | 27 | 60 | - | 45 | 21 | SXM27-S | 1 | |
| | FMB32C-50-S | A | 32 | 78 | - | 50 | 24 | SXM32-S | 1.5 | |
| BT40- | FMB16C-60-S | A | 16 | 34 | - | 60 | 17 | SCAM080300-S | 1.3 | |
| | FMB16C-90-S | A | 16 | 34 | - | 90 | 17 | SCAM080300-S | 1.5 | |
| | FMB16C-120-S | A | 16 | 34 | - | 120 | 17 | SCAM080300-S | 1.7 | |
| | FMB22C-60-S | A | 22 | 42 | - | 60 | 19 | SCAM100300-S | 1.4 | |
| | FMB22C-90-S | A | 22 | 42 | - | 90 | 19 | SCAM100300-S | 1.7 | |
| | FMB22C-120-S | A | 22 | 42 | - | 120 | 19 | SCAM100300-S | 2.1 | |
| | FMB22C-150L-S | A | 22 | 42 | 60 | 150 | 19 | SCAM100300-S | 3 | |
| | FMB22C-200L-S | A | 22 | 42 | 60 | 200 | 19 | SCAM100300-S | 3.8 | |
| | FMB22C-250L-S | A | 22 | 42 | 60 | 250 | 19 | SCAM100300-S | 4.6 | |
| | FMB22C-300L-S | A | 22 | 42 | 60 | 300 | 19 | SCAM100300-S | 5.5 | |
| | FMB27C-60-S | A | 27 | 60 | - | 60 | 21 | SXM27-S | 1.9 | |
| | FMB27C-90-S | A | 27 | 60 | - | 90 | 21 | SXM27-S | 2.5 | |
| | FMB27C-120-S | A | 27 | 60 | - | 120 | 21 | SXM27-S | 3.2 | |
| | FMB32C-60-S | A | 32 | 78 | - | 60 | 24 | SXM32-S | 2.3 | |
| | FMB32C-100-S | A | 32 | 78 | - | 100 | 24 | SXM32-S | 2.8 | |
| | FMB40C-60-S | A | 40 | 89 | - | 60 | 27 | SXM40-S | 2.7 | |
| | FMC40C-60-S | B | 40 | 89 | 66.7 | 60 | 27 | SCAM120450-S(4) | 5.0 | |
| | BT50- | FMB16C-60-S | A | 16 | 34 | - | 60 | 17 | SCAM080300-S | 3.7 |
| | | FMB16C-90-S | A | 16 | 34 | - | 90 | 17 | SCAM080300-S | 3.9 |
| | | FMB16C-120-S | A | 16 | 34 | - | 120 | 17 | SCAM080300-S | 4.1 |
| FMB22C-60-S | | A | 22 | 42 | - | 60 | 19 | SCAM100300-S | 4 | |
| FMB22C-90-S | | A | 22 | 42 | - | 90 | 19 | SCAM100300-S | 4.2 | |
| FMB22C-150L-S | | A | 22 | 42 | 60 | 150 | 19 | SCAM100300-S | 5.5 | |
| FMB22C-200L-S | | A | 22 | 42 | 60 | 200 | 19 | SCAM100300-S | 6.2 | |
| FMB22C-250L-S | | A | 22 | 42 | 60 | 250 | 19 | SCAM100300-S | 7 | |
| FMB22C-300L-S | | A | 22 | 42 | 60 | 300 | 19 | SCAM100300-S | 7.8 | |
| FMB27C-60-S | | A | 27 | 60 | - | 60 | 21 | SXM27-S | 4.3 | |

面铣刀刀柄
Face Mill Holder

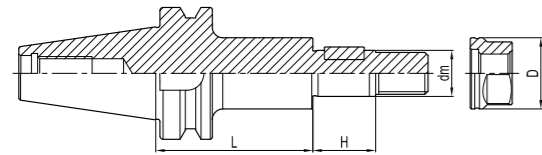
FMB



| 订货号 Ordering Code | 图示 Figure | 尺寸 Dimension (mm) | | | | | 压紧螺钉 Screw | 重量 Weight(kg) | |
|----------------------|---------------|----------------------|----|-----|-------|-----|---------------|------------------|------|
| | | dm | D1 | D2 | L | H | | | |
| BT50- | FMB27C-90-S | A | 27 | 60 | - | 90 | 21 | SXM27-S | 4.8 |
| | FMB27C-120-S | A | 27 | 60 | - | 120 | 21 | SXM27-S | 5.6 |
| | FMB27C-150L-S | A | 27 | 60 | 75 | 150 | 21 | SXM27-S | 6.8 |
| | FMB27C-200L-S | A | 27 | 60 | 75 | 200 | 21 | SXM27-S | 8.2 |
| | FMB27C-250L-S | A | 27 | 60 | 75 | 250 | 21 | SXM27-S | 9.8 |
| | FMB27C-300L-S | A | 27 | 60 | 75 | 300 | 21 | SXM27-S | 11 |
| | FMB32C-60-S | A | 32 | 78 | - | 60 | 24 | SXM32-S | 4.7 |
| | FMB32C-90-S | A | 32 | 78 | - | 90 | 24 | SXM32-S | 5.8 |
| | FMB32C-150-S | A | 32 | 78 | - | 150 | 24 | SXM32-S | 8 |
| | FMB32C-200-S | A | 32 | 78 | - | 200 | 24 | SXM32-S | 9.8 |
| | FMB40C-60-S | A | 40 | 89 | - | 60 | 27 | SXM40-S | 5.2 |
| | FMB40C-75-S | A | 40 | 89 | - | 75 | 27 | SXM40-S | 5.8 |
| | FMB40C-90-S | A | 40 | 89 | - | 90 | 27 | SXM40-S | 6.5 |
| | FMB40C-120-S | A | 40 | 89 | - | 120 | 27 | SXM40-S | 7.4 |
| | FMB40C-150-S | A | 40 | 89 | - | 150 | 27 | SXM40-S | 8.6 |
| | FMB40C-200-S | A | 40 | 89 | - | 200 | 27 | SXM40-S | 11.8 |
| | FMC40C-75-S | B | 40 | 89 | 66.7 | 75 | 27 | SCAM120450-S(4) | 6.0 |
| | FMC60C-75-S | B | 60 | 129 | 101.6 | 75 | 38 | SCAM160450-S(4) | 8 |

三面刃铣刀刀柄
Solting Cutter Holders

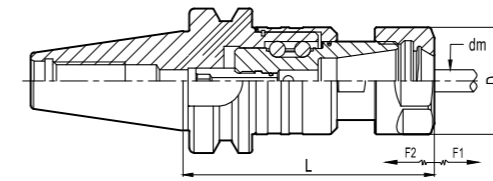
SC



| 订货号 Ordering Code | 尺寸 Dimension (mm) | | | | 垫圈 Washer | 重量 Weight(kg) |
|----------------------|----------------------|-----------|----|-----|--------------|------------------|
| | dm | D | L | H | | |
| BT40- | SC22-75-S | 22 | 34 | 75 | SD22-S | 1.7 |
| | SC22-120-S | 22 | 34 | 120 | SD22-S | 2.1 |
| | SC27-75-S | 27 | 40 | 75 | SD27-S | 2 |
| | SC27-120-S | 27 | 40 | 120 | SD27-S | 2.5 |
| | SC32-90-S | 32 | 46 | 90 | SD32-S | 2.6 |
| | BT50- | SC22-90-S | 22 | 34 | 90 | SD22-S |
| | SC22-135-S | 22 | 34 | 135 | SD22-S | 4.6 |
| | SC27-90-S | 27 | 40 | 90 | SD27-S | 4.7 |
| | SC27-135-S | 27 | 40 | 135 | SD27-S | 5.2 |
| | SC32-90-S | 32 | 46 | 90 | SD32-S | 5 |
| | SC32-135-S | 32 | 46 | 135 | SD32-S | 5.7 |
| | SC40-90-S | 40 | 55 | 90 | SD40-S | 6 |
| | SC40-135-S | 40 | 55 | 135 | SD40-S | 6.6 |
| | SC50-90-S | 50 | 69 | 90 | SD50-S | 7.2 |
| | SC50-135-S | 50 | 69 | 135 | SD50-S | 8.6 |

一体式微补偿攻牙刀柄
Tapping Chuck

V

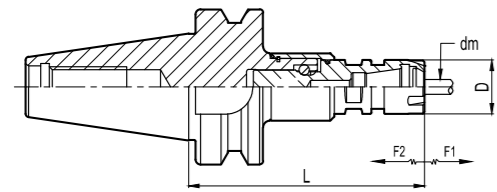


| 订货号 Ordering Code | 适用丝锥 Apply Taps | 尺寸 Dimension (mm) | | | | | 螺母 Nuts | 卡簧 Collets |
|----------------------|-----------------------|----------------------|----|-----|-----|-----|--------------|---------------|
| | | dm | D | L | F1 | F2 | | |
| BT30-V20-80-S | M4~M12 (No.8~7/16) | 3~10 | 34 | 80 | 0.5 | 0.5 | ER20-A-S | ER20 |
| BT40-V20-85-S | | 3~10 | 34 | 85 | 0.5 | 0.5 | ER20-A-S | ER20 |
| BT50-V20-100-S | | 3~10 | 34 | 100 | 0.5 | 0.5 | ER20-A-S | ER20 |
| BT40-V32-100-S | M4~M20 (No.8~3/4) | 3~16 | 50 | 100 | 0.5 | 0.5 | ER32-UM/RD-S | ER32 |
| BT50-V32-115-S | | 3~16 | 50 | 115 | 0.5 | 0.5 | ER32-UM/RD-S | ER32 |

注：筒夹和扳手需单独订购
Notice: Collets and wrenches shall be ordered separately.

一体式微补偿攻牙刀柄
Tapping Chuck

V



| 订货号 Ordering Code | 适用丝锥 Apply Taps | 尺寸 Dimension (mm) | | | | | 螺母 Nuts | 卡簧 Collets |
|----------------------|--------------------|----------------------|----|----|-----|-----|------------|---------------|
| | | dm | D | L | F1 | F2 | | |
| BT30-V11-70-S | M1-M7 | 2.5-7 | 16 | 70 | 0.2 | 0.2 | ER11-M-S | ER11 |

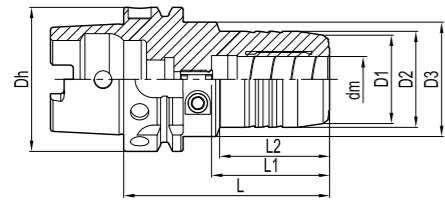
注：筒夹和扳手需单独订购
Notice: Collets and wrenches shall be ordered separately.



B HSK 工具系统
HSK TOOLING SYSTEM

液压刀柄
Hydraulic Chuck

GHP



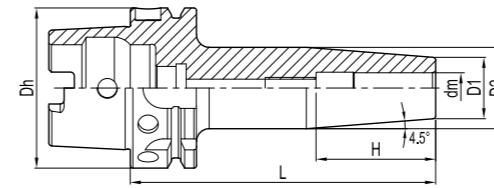
| 订货号 Ordering Code | 尺寸 Dimension (mm) | | | | | | | | 筒夹 Collets | 重量 Weight(kg) | |
|----------------------|----------------------|-----|----|----|----|------|-----|----|---------------|------------------|-----|
| | Dh | dm | D1 | D2 | D3 | L | L1 | L2 | | | |
| HSK40A- | GHP06-70-S | 40 | 6 | 22 | 26 | 34 | 70 | 37 | 36 | - | 0.4 |
| | GHP08-70-S | 40 | 8 | 24 | 28 | 50 | 70 | 37 | 36/24 | - | 0.4 |
| | GHP10-75-S | 40 | 10 | 26 | 30 | 50 | 75 | 41 | 22 | - | 0.5 |
| | GHP12-85-S | 40 | 12 | 28 | 32 | 50 | 85 | 46 | 30 | OD12 | 0.6 |
| HSK50A- | GHP06-75-S | 50 | 6 | 22 | 26 | 42 | 75 | 37 | 28 | - | 0.7 |
| | GHP08-75-S | 50 | 8 | 24 | 28 | 42 | 75 | 37 | 28 | - | 0.7 |
| | GHP10-85-S | 50 | 10 | 26 | 30 | 42 | 85 | 41 | 43 | - | 0.8 |
| | GHP12-85-S | 50 | 12 | 28 | 32 | 42 | 85 | 46 | 44 | OD12 | 0.8 |
| | GHP14-85-S | 50 | 14 | 30 | 34 | 56 | 85 | 46 | 28.5 | - | 0.9 |
| | GHP16-90-S | 50 | 16 | 34 | 38 | 56 | 90 | 49 | 28.5 | - | 1 |
| HSK63A- | GHP18-90-S | 50 | 18 | 36 | 40 | 53 | 90 | 51 | 30 | - | 1.1 |
| | GHP20-90-S | 50 | 20 | 38 | 42 | 59.5 | 90 | 51 | 29 | OD20 | 1.1 |
| | GHP06-70-S | 63 | 6 | 22 | 26 | 50 | 70 | 37 | 24 | - | 1 |
| | GHP08-70-S | 63 | 8 | 24 | 28 | 50 | 70 | 37 | 25 | - | 1 |
| | GHP10-80-S | 63 | 10 | 26 | 30 | 50 | 80 | 41 | 35 | - | 1.1 |
| | GHP12-85-S | 63 | 12 | 28 | 32 | 50 | 85 | 46 | 40 | OD12 | 1.1 |
| | GHP14-85-S | 63 | 14 | 30 | 34 | 50 | 85 | 46 | 40 | - | 1.1 |
| | GHP16-90-S | 63 | 16 | 34 | 38 | 50 | 90 | 49 | 46 | - | 1.2 |
| | GHP18-90-S | 63 | 18 | 36 | 40 | 50 | 90 | 49 | 47 | - | 1.2 |
| | GHP20-90-S | 63 | 20 | 38 | 42 | 50 | 90 | 51 | 48 | OD20 | 1.2 |
| HSK100A- | GHP25-120-S | 63 | 25 | 53 | 57 | 63 | 120 | 57 | 59 | - | 2.2 |
| | GHP32-125-S | 63 | 32 | 60 | 64 | 75 | 125 | 61 | 63 | OD32 | 2.6 |
| | GHP06-75-S | 100 | 6 | 22 | 26 | 50 | 75 | 37 | 26 | - | 2.3 |
| | GHP08-75-S | 100 | 8 | 24 | 28 | 50 | 75 | 37 | 26 | - | 2.4 |
| | GHP10-90-S | 100 | 10 | 26 | 30 | 50 | 90 | 41 | 42 | - | 2.4 |
| | GHP12-95-S | 100 | 12 | 28 | 32 | 50 | 95 | 46 | 47 | OD12 | 2.5 |
| | GHP14-95-S | 100 | 14 | 30 | 34 | 50 | 95 | 46 | 47.6 | - | 2.5 |
| | GHP16-100-S | 100 | 16 | 34 | 38 | 50 | 100 | 49 | 53 | - | 2.6 |
| | GHP18-100-S | 100 | 18 | 36 | 40 | 50 | 100 | 49 | 53 | - | 2.6 |
| | GHP20-105-S | 100 | 20 | 38 | 42 | 50 | 105 | 51 | 59 | OD20 | 2.7 |
| HSK100A- | GHP25-110-S | 100 | 25 | 53 | 57 | 63 | 110 | 57 | 62 | - | 3.4 |
| | GHP32-110-S | 100 | 32 | 60 | 64 | 75 | 110 | 61 | 62 | OD32 | 3.7 |

注：筒夹和扳手需单独订购
Notice: Collets and Wrenches shall be ordered separately.

| | | | | | | | | |
|---------------|-----------|------|-------|-------|-------|-------|-----------|-------|
| 附件Accessories | dm=6 | dm=8 | dm=10 | dm=12 | dm=16 | dm=20 | dm=25 | dm=32 |
| 扳手Hex Wrench | TH05T-L-S | | | | | | TH06T-L-S | |

热装刀柄
Shrink Fit Holder

SF



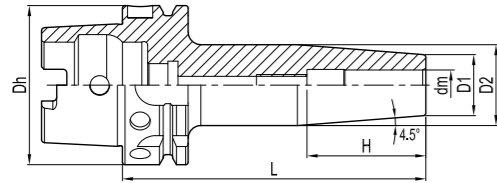
柄径公差
h6



| 订货号 Ordering Code | 尺寸 Dimension (mm) | | | | | | 重量 Weight(kg) | |
|----------------------|----------------------|-----------|----|----|----|-----|------------------|-----|
| | Dh | dm | D1 | D2 | L | H | | |
| HSK50A- | SF03-60-S | 50 | 3 | 10 | - | 60 | - | 0.5 |
| | SF04-60-S | 50 | 4 | 10 | - | 60 | - | 0.5 |
| | SF05-60-S | 50 | 5 | 10 | - | 60 | - | 0.5 |
| | SF06-80-S | 50 | 6 | 21 | 27 | 80 | 36 | 0.6 |
| | SF08-80-S | 50 | 8 | 21 | 27 | 80 | 36 | 0.6 |
| | SF10-85-S | 50 | 10 | 24 | 32 | 85 | 42 | 0.7 |
| | SF12-90-S | 50 | 12 | 24 | 32 | 90 | 47 | 0.7 |
| | SF16-95-S | 50 | 16 | 27 | 34 | 95 | 47 | 0.7 |
| | HSK63A- | SF03-80-S | 63 | 3 | 10 | - | 80 | - |
| SF04-80-S | | 63 | 4 | 10 | - | 80 | - | 0.7 |
| SF05-80-S | | 63 | 5 | 10 | - | 80 | - | 0.7 |
| SF06-80-S | | 63 | 6 | 21 | 27 | 80 | 36 | 0.8 |
| SF06-120-S | | 63 | 6 | 21 | 27 | 120 | 36 | 0.9 |
| SF06-160-S | | 63 | 6 | 21 | 32 | 160 | 36 | 1.2 |
| SF08-80-S | | 63 | 8 | 21 | 27 | 80 | 36 | 0.6 |
| SF08-120-S | | 63 | 8 | 21 | 27 | 120 | 36 | 0.9 |
| SF08-160-S | | 63 | 8 | 21 | 32 | 160 | 36 | 1.2 |
| SF10-85-S | | 63 | 10 | 24 | 32 | 85 | 42 | 0.9 |
| SF10-120-S | | 63 | 10 | 24 | 32 | 120 | 42 | 0.8 |
| SF10-160-S | | 63 | 10 | 24 | 34 | 160 | 42 | 1.1 |
| SF12-90-S | | 63 | 12 | 24 | 32 | 90 | 47 | 0.9 |
| SF12-120-S | | 63 | 12 | 24 | 32 | 120 | 47 | 1 |
| SF12-160-S | | 63 | 12 | 24 | 34 | 160 | 47 | 1.3 |
| SF14-90-S | | 63 | 14 | 27 | 34 | 90 | 47 | 1 |
| SF14-120-S | | 63 | 14 | 27 | 34 | 120 | 47 | 1.1 |
| SF14-160-S | | 63 | 14 | 27 | 42 | 160 | 47 | 1.5 |
| HSK100A- | SF16-95-S | 63 | 16 | 27 | 34 | 95 | 50 | 0.9 |
| | SF16-120-S | 63 | 16 | 27 | 34 | 120 | 50 | 1 |
| | SF16-160-S | 63 | 16 | 27 | 42 | 160 | 50 | 1.5 |
| | SF18-95-S | 63 | 18 | 33 | 42 | 95 | 50 | 1.2 |
| | SF18-120-S | 63 | 18 | 33 | 42 | 120 | 50 | 1.3 |

热装刀柄
Shrink Fit Holder

SF



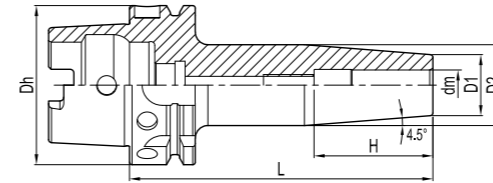
柄径公差
h6



| 订货号 Ordering Code | 尺寸 Dimension (mm) | | | | | | 重量 Weight(kg) | |
|----------------------|----------------------|-----|----|----|----|-----|------------------|-----|
| | Dh | dm | D1 | D2 | L | H | | |
| HSK63A- | SF18-160-S | 63 | 18 | 33 | 51 | 160 | 50 | 1.9 |
| | SF20-100-S | 63 | 20 | 33 | 42 | 100 | 52 | 0.9 |
| | SF20-120-S | 63 | 20 | 33 | 42 | 120 | 52 | 1.2 |
| | SF20-160-S | 63 | 20 | 33 | 51 | 160 | 52 | 1.7 |
| | SF25-115-S | 63 | 25 | 44 | 53 | 115 | 58 | 1.5 |
| | SF25-130-S | 63 | 25 | 44 | 53 | 130 | 58 | 1.4 |
| | SF25-160-S | 63 | 25 | 44 | 53 | 160 | 58 | 1.9 |
| | SF32-120-S | 63 | 32 | 44 | 53 | 120 | 58 | 1.3 |
| | SF32-160-S | 63 | 32 | 44 | 53 | 160 | 58 | 2.3 |
| HSK100A- | SF06-85-S | 100 | 6 | 21 | 27 | 85 | 36 | 2.2 |
| | SF06-120-S | 100 | 6 | 21 | 27 | 120 | 36 | 2.3 |
| | SF06-160-S | 100 | 6 | 21 | 32 | 160 | 36 | 2.6 |
| | SF08-85-S | 100 | 8 | 21 | 27 | 85 | 36 | 2 |
| | SF08-120-S | 100 | 8 | 21 | 27 | 120 | 36 | 2.3 |
| | SF08-160-S | 100 | 8 | 21 | 32 | 160 | 36 | 2.6 |
| | SF10-90-S | 100 | 10 | 24 | 32 | 90 | 42 | 2.3 |
| | SF10-120-S | 100 | 10 | 24 | 32 | 120 | 42 | 2.2 |
| | SF10-160-S | 100 | 10 | 24 | 34 | 160 | 42 | 2.5 |
| | SF12-95-S | 100 | 12 | 24 | 32 | 95 | 47 | 2.3 |
| | SF12-120-S | 100 | 12 | 24 | 32 | 120 | 47 | 2.4 |
| | SF12-160-S | 100 | 12 | 24 | 34 | 160 | 47 | 2.7 |
| | SF14-95-S | 100 | 14 | 27 | 34 | 95 | 47 | 2.4 |
| | SF14-120-S | 100 | 14 | 27 | 34 | 120 | 47 | 2.5 |
| | SF14-160-S | 100 | 14 | 27 | 42 | 160 | 47 | 2.9 |
| | SF16-100-S | 100 | 16 | 27 | 34 | 100 | 50 | 2.3 |
| | SF16-120-S | 100 | 16 | 27 | 34 | 120 | 50 | 2.4 |
| | SF16-160-S | 100 | 16 | 27 | 42 | 160 | 50 | 2.9 |
| | SF18-100-S | 100 | 18 | 33 | 42 | 100 | 50 | 2.6 |
| | SF18-120-S | 100 | 18 | 33 | 42 | 120 | 50 | 2.7 |
| | SF18-160-S | 100 | 18 | 33 | 51 | 160 | 50 | 3.3 |
| | SF20-105-S | 100 | 20 | 33 | 42 | 105 | 52 | 2.4 |

热装刀柄
Shrink Fit Holder

SF



柄径公差
h6



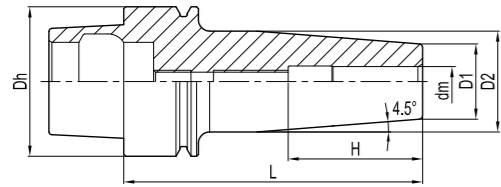
| 订货号 Ordering Code | 尺寸 Dimension (mm) | | | | | | 重量 Weight(kg) | |
|----------------------|----------------------|-----|----|----|----|-----|------------------|-----|
| | Dh | dm | D1 | D2 | L | H | | |
| HSK100A- | SF20-120-S | 100 | 20 | 33 | 42 | 120 | 52 | 2.7 |
| | SF20-160-S | 100 | 20 | 33 | 51 | 160 | 52 | 3.2 |
| | SF25-115-S | 100 | 25 | 44 | 53 | 115 | 58 | 2.9 |
| | SF25-130-S | 100 | 25 | 44 | 53 | 130 | 58 | 2.8 |
| | SF25-160-S | 100 | 25 | 44 | 60 | 160 | 58 | 3.3 |
| | SF32-120-S | 100 | 32 | 44 | 53 | 120 | 58 | 2.7 |
| | SF32-160-S | 100 | 32 | 44 | 60 | 160 | 58 | 3.7 |

特点
Feature

| | |
|-------------------|-------------------------|
| 动平衡设定 Balanced | 3D处径向跳动 Runout (X3D) |
| G2.5; 25,000 rpm | < 0.003 mm |

热装刀柄
Shrink Fit Holder

SF



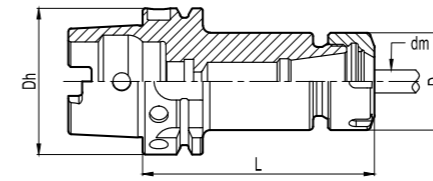
| 订货号 Ordering Code | 尺寸 Dimension (mm) | | | | | | 重量 Weight(kg) | |
|----------------------|----------------------|----|----|----|----|----|------------------|-----|
| | Dh | dm | D1 | D2 | L | H | | |
| HSK40E- | SF03-60-S | 40 | 3 | 10 | - | 60 | - | 0.4 |
| | SF04-60-S | 40 | 4 | 10 | - | 60 | - | 0.4 |
| | SF05-60-S | 40 | 5 | 10 | - | 60 | - | 0.4 |
| | SF06-60-S | 40 | 6 | 21 | 27 | 60 | 36 | 0.4 |
| | SF08-80-S | 40 | 8 | 21 | 27 | 80 | 36 | 0.4 |
| | SF10-80-S | 40 | 10 | 24 | 32 | 80 | 42 | 0.5 |
| | SF12-90-S | 40 | 12 | 24 | 32 | 90 | 47 | 0.5 |
| | SF14-90-S | 40 | 14 | 27 | 34 | 90 | 47 | 0.6 |
| | SF16-90-S | 40 | 16 | 27 | 34 | 90 | 50 | 0.5 |

特点
Feature

| | |
|-------------------|-------------------------|
| 动平衡设定 Balanced | 3D处径向跳动 Runout (X3D) |
| G2.5; 25,000 rpm | <0.003 mm |

ER弹性筒夹刀柄
Spring Collet Chuck

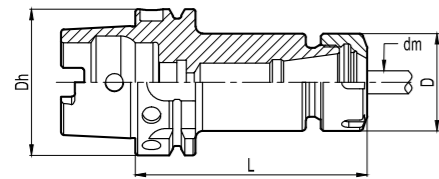
ER



| 订货号 Ordering Code | 尺寸 Dimension (mm) | | | | 重量 Weight(kg) | |
|----------------------|----------------------|----|--------|----|------------------|-----|
| | Dh | dm | D | L | | |
| HSK40A- | ER20-80-S | 40 | 1.0~13 | 34 | 80 | 0.5 |
| | ER25-80-S | 40 | 1.0~16 | 42 | 80 | 0.6 |
| | ER32-100-S | 40 | 2.0~20 | 50 | 100 | 1 |
| HSK50A- | ER16-75-S | 50 | 0.5~10 | 28 | 75 | 0.6 |
| | ER16-100-S | 50 | 0.5~10 | 28 | 100 | 0.7 |
| | ER20-75-S | 50 | 1.0~13 | 34 | 75 | 0.7 |
| | ER20-100-S | 50 | 1.0~13 | 34 | 100 | 0.8 |
| | ER25-80-S | 50 | 1.0~16 | 42 | 80 | 0.8 |
| | ER25-100-S | 50 | 1.0~16 | 42 | 100 | 1 |
| | ER25-135-S | 50 | 1.0~16 | 42 | 135 | 1.1 |
| | ER32-100-S | 50 | 2.0~20 | 50 | 100 | 1.2 |
| | ER32-135-S | 50 | 2.0~20 | 50 | 135 | 1.5 |
| | ER32-160-S | 50 | 2.0~20 | 50 | 160 | 2.1 |
| HSK63A- | ER11-75-S | 63 | 0.5~7 | 19 | 75 | 0.7 |
| | ER16-80-S | 63 | 0.5~10 | 28 | 80 | 0.8 |
| | ER16-100-S | 63 | 0.5~10 | 28 | 100 | 0.9 |
| | ER16-120-S | 63 | 0.5~10 | 28 | 120 | 1 |
| | ER16-160-S | 63 | 0.5~10 | 28 | 160 | 1.2 |
| | ER20-80-S | 63 | 1.0~13 | 34 | 80 | 0.9 |
| | ER20-100-S | 63 | 1.0~13 | 34 | 100 | 1 |
| | ER20-120-S | 63 | 1.0~13 | 34 | 120 | 1.2 |
| | ER20-160-S | 63 | 1.0~13 | 34 | 160 | 1.4 |
| | ER25-80-S | 63 | 1.0~16 | 42 | 80 | 1 |
| | ER25-100-S | 63 | 1.0~16 | 42 | 100 | 1.2 |
| | ER25-120-S | 63 | 1.0~16 | 42 | 120 | 1.4 |
| | ER25-150-S | 63 | 1.0~16 | 42 | 150 | 1.7 |
| | ER32-80-S | 63 | 2.0~20 | 50 | 80 | 1.2 |
| | ER32-100-S | 63 | 2.0~20 | 50 | 100 | 1.4 |
| | ER32-120-S | 63 | 2.0~20 | 50 | 120 | 1.7 |
| | ER32-160-S | 63 | 2.0~20 | 50 | 160 | 2.3 |
| | ER40-80-S | 63 | 3.0~26 | 63 | 80 | 1.2 |

ER弹性筒夹刀柄
Spring Collet Chuck

ER

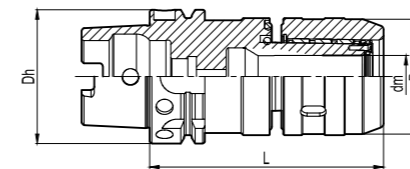


| 订货号 Ordering Code | 尺寸 Dimension (mm) | | | | 重量 Weight(kg) | |
|----------------------|----------------------|-----|--------|----|------------------|-----|
| | Dh | dm | D | L | | |
| HSK63A- | ER40-100-S | 63 | 3.0~26 | 63 | 100 | 1.5 |
| | ER40-120-S | 63 | 3.0~26 | 63 | 120 | 1.7 |
| | ER40-160-S | 63 | 3.0~26 | 63 | 160 | 2.3 |
| HSK100A- | ER16-100-S | 100 | 0.5~10 | 28 | 100 | 2.3 |
| | ER16-160-S | 100 | 0.5~10 | 28 | 160 | 2.5 |
| | ER20-100-S | 100 | 1.0~13 | 34 | 100 | 2.4 |
| | ER20-160-S | 100 | 1.0~13 | 34 | 160 | 2.7 |
| | ER25-100-S | 100 | 1.0~16 | 42 | 100 | 2.5 |
| | ER25-160-S | 100 | 1.0~16 | 42 | 160 | 3.1 |
| | ER25-200-S | 100 | 1.0~16 | 42 | 200 | 3.5 |
| | ER32-100-S | 100 | 2.0~20 | 50 | 100 | 2.7 |
| | ER32-160-S | 100 | 2.0~20 | 50 | 160 | 3.6 |
| | ER32-200-S | 100 | 2.0~20 | 50 | 200 | 4.1 |
| | ER40-100-S | 100 | 3.0~26 | 63 | 100 | 3.1 |
| | ER40-120-S | 100 | 3.0~26 | 63 | 120 | 3.5 |
| | ER40-160-S | 100 | 3.0~26 | 63 | 160 | 4.4 |
| | ER40-200-S | 100 | 3.0~26 | 63 | 200 | 5.2 |

注：筒夹与扳手需单独另购
Notice: Collets and wrenches shall be ordered separately.

强力筒夹刀柄
Power Milling Chuck For Heavy Duty

GLC

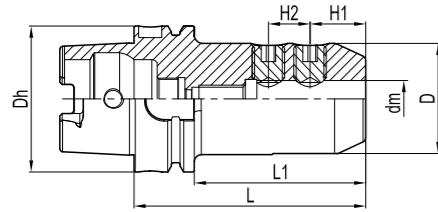


| 订货号 Ordering Code | 范围 Range(mm) | 尺寸 Dimension (mm) | | | | 筒夹 Collets | 重量 Weight(kg) |
|----------------------|-----------------|----------------------|----|----|-----|---------------|------------------|
| | | Dh | dm | D | L | | |
| HSK63A-GLC20-105-S | 6-20 | 63 | 20 | 52 | 105 | GC20 | 2.3 |
| HSK63A-GLC25-110-S | 6-25 | 63 | 25 | 60 | 110 | GC25 | 2.5 |
| HSK63A-GLC32-115-S | 6-32 | 63 | 32 | 69 | 115 | GC32 | 2.7 |
| HSK100A-GLC20-110-S | 6-20 | 100 | 20 | 52 | 110 | GC20 | 2.7 |
| HSK100A-GLC25-115-S | 6-25 | 100 | 25 | 60 | 115 | GC25 | 2.8 |
| HSK100A-GLC32-120-S | 6-32 | 100 | 32 | 69 | 120 | GC32 | 2.9 |
| HSK100A-GLC42-120-S | 6-42 | 100 | 42 | 86 | 120 | GC42 | 3.1 |

注：筒夹与扳手需单独另购
Notice: Collets and wrenches shall be ordered separately.

侧固式刀柄
Side-lock Holder

GLN

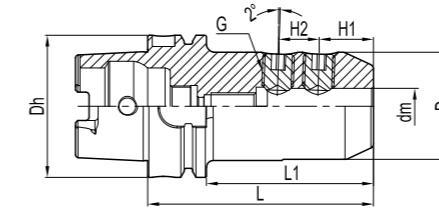


| 订货号 Ordering Code | 尺寸 Dimension (mm) | | | | | | | | 侧固螺钉 Screws | 重量 Weight(kg) |
|----------------------|----------------------|-----|----|----|-----|----|----|----|----------------|------------------|
| | Dh | dm | D | L | L1 | H1 | H2 | | | |
| HSK63A- | GLN16-80-S | 63 | 16 | 48 | 80 | 54 | 24 | - | STCM140160-S | 1.2 |
| | GLN20-80-S | 63 | 20 | 52 | 80 | 54 | 25 | - | STCM160160-S | 1.3 |
| | GLN25-110-S | 63 | 25 | 65 | 110 | 84 | 24 | 25 | STCM180200-S | 2.24 |
| | GLN32-110-S | 63 | 32 | 72 | 110 | 84 | 24 | 28 | STCM200200-S | 2.24 |
| HSK100A- | GLN16-100-S | 100 | 16 | 48 | 100 | 71 | 24 | - | STCM140160-S | 2.82 |
| | GLN20-100-S | 100 | 20 | 52 | 100 | 71 | 25 | - | STCM160160-S | 2.93 |
| | GLN25-100-S | 100 | 25 | 65 | 100 | 81 | 24 | 25 | STCM180200-S | 3.5 |
| | GLN32-100-S | 100 | 32 | 72 | 100 | 71 | 24 | 28 | STCM200200-S | 3.7 |

注：扳手需单独订购。
Notice: wrenches shall be ordered separately.

侧固式刀柄 (2°)
Side-lock Holder (2°)

GLNB

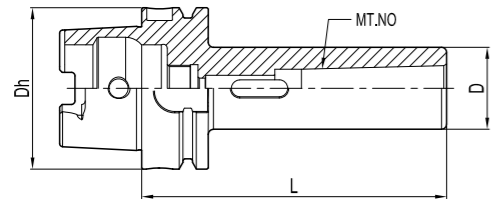


| 订货号 Ordering Code | 尺寸 Dimension (mm) | | | | | | | | 侧固螺钉 Screws | 重量 Weight(kg) |
|----------------------|----------------------|-----|----|----|-----|----|----|------|----------------|------------------|
| | Dh | dm | D | L | L1 | H1 | H2 | | | |
| HSK63A- | GLNB16-100-S | 63 | 16 | 48 | 100 | 74 | 24 | - | STCM140160-S | 1.51 |
| | GLNB20-100-S | 63 | 20 | 52 | 100 | 74 | 25 | - | STCM160160-S | 1.65 |
| | GLNB25-110-S | 63 | 25 | 65 | 110 | 84 | 24 | 65.5 | STCM180200-S | 2.23 |
| | GLNB32-110-S | 63 | 32 | 72 | 110 | 84 | 24 | 65.5 | STCM200200-S | 2.43 |
| | GLNB16-100-S | 100 | 16 | 48 | 100 | 71 | 24 | - | STCM140160-S | 2.88 |
| HSK100A- | GLNB20-110-S | 100 | 20 | 52 | 110 | 81 | 25 | - | STCM160160-S | 3.1 |
| | GLNB25-120-S | 100 | 25 | 65 | 120 | 91 | 24 | - | STCM180200-S | 3.91 |
| | GLNB32-120-S | 100 | 32 | 72 | 120 | 91 | 24 | - | STCM200200-S | 4.32 |

注：扳手需单独订购。
Notice: wrenches shall be ordered separately.

有扁尾莫氏圆锥孔刀柄
Morse Taper Holder with Tang

MTA

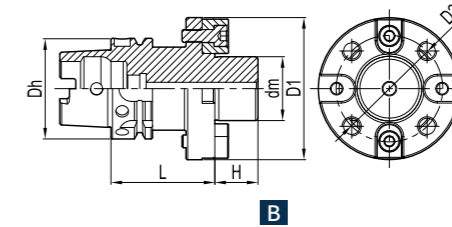
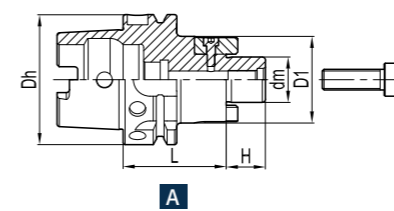


| 订货号 Ordering Code | MT | 尺寸 Dimension (mm) | | | 重量 Weight(kg) | |
|----------------------|------------|----------------------|-----|----|------------------|------|
| | | Dh | D | L | | |
| HSK63A- | MTA1-100-S | 1 | 63 | 25 | 100 | 0.88 |
| | MTA2-120-S | 2 | 63 | 32 | 120 | 1.09 |
| | MTA3-140-S | 3 | 63 | 40 | 140 | 1.45 |
| | MTA4-160-S | 4 | 63 | 48 | 160 | 1.89 |
| HSK100A- | MTA1-110-S | 1 | 100 | 25 | 110 | 2.23 |
| | MTA2-120-S | 2 | 100 | 32 | 120 | 2.39 |
| | MTA3-150-S | 3 | 100 | 40 | 150 | 2.83 |
| | MTA4-170-S | 4 | 100 | 48 | 170 | 3.31 |
| | MTA5-200-S | 5 | 100 | 63 | 200 | 4.6 |

注：扳手需单独订购。
Notice: wrenches shall be ordered separately.

面铣刀刀柄
Face Mill Holder

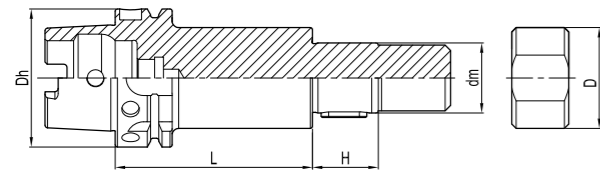
FMB



| 订货号 Ordering Code | 图示 Figure | 尺寸 Dimension (mm) | | | | | | 压紧螺钉 Screw | 重量 Weight(kg) | |
|----------------------|--------------|----------------------|-----|-----|-------|------|-----|-----------------|------------------|-----|
| | | Dh | dm | D1 | D2 | L | H | | | |
| HSK63A- | FMB16C-50-S | A | 63 | 16 | 34 | - | 50 | 17 | SCAM080300-S | 0.8 |
| | FMB16C-100-S | A | 63 | 16 | 34 | - | 100 | 17 | SCAM080300-S | 1.2 |
| | FMB22C-50-S | A | 63 | 22 | 42 | - | 50 | 19 | SCAM100300-S | 1 |
| | FMB22C-100-S | A | 63 | 22 | 42 | - | 100 | 19 | SCAM100300-S | 1.5 |
| | FMB27C-60-S | A | 63 | 27 | 60 | - | 60 | 21 | SXM27-S | 1.4 |
| | FMB27C-100-S | A | 63 | 27 | 60 | - | 100 | 21 | SXM27-S | 2.1 |
| | FMB32C-60-S | A | 63 | 32 | 78 | - | 60 | 24 | SXM32-S | 1.8 |
| | FMB32C-100-S | A | 63 | 32 | 78 | - | 100 | 24 | SXM32-S | 2.4 |
| | FMB40C-60-S | A | 63 | 40 | 89 | - | 60 | 27 | SXM40-S | 2.3 |
| HSK100A- | FMB22C-50-S | A | 100 | 22 | 42 | - | 50 | 19 | SCAM100300-S | 2.3 |
| | FMB22C-100-S | A | 100 | 22 | 42 | - | 100 | 19 | SCAM100300-S | 2.8 |
| | FMB27C-50-S | A | 100 | 27 | 60 | - | 50 | 21 | SXM27-S | 2.6 |
| | FMB27C-100-S | A | 100 | 27 | 60 | - | 100 | 21 | SXM27-S | 3.7 |
| | FMB32C-50-S | A | 100 | 32 | 78 | - | 50 | 24 | SXM32-S | 3 |
| | FMB32C-100-S | A | 100 | 32 | 78 | - | 100 | 24 | SXM32-S | 4.9 |
| | FMB40C-60-S | A | 100 | 40 | 89 | - | 60 | 27 | SXM40-S | 3.9 |
| | FMB40C-75-S | A | 100 | 40 | 89 | - | 75 | 27 | SXM40-S | 4.5 |
| | FMB40C-100-S | A | 100 | 40 | 89 | - | 100 | 27 | SXM40-S | 5.4 |
| | FMC40C-75-S | B | 100 | 40 | 89 | 66.7 | 75 | 27 | SCAM120450-S(4) | 5.0 |
| FMC60C-75-S | B | 100 | 60 | 129 | 101.6 | 75 | 38 | SCAM160450-S(4) | 6.6 | |

三面刃铣刀刀柄
Solting Cutter Holders

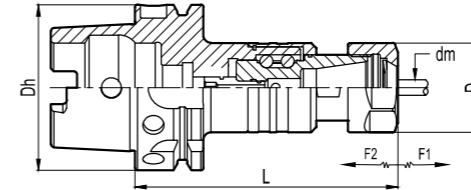
SC



| 订货号 Ordering Code | 尺寸 Dimension (mm) | | | | | 垫圈 Washer | 重量 Weight(kg) | |
|----------------------|----------------------|-----------|-----|-----|-----|--------------|------------------|--------|
| | Dh | dm | D | L | H | | | |
| HSK63A- | SC13-75-S | 63 | 13 | 20 | 75 | 30 | SD13-S | 0.9 |
| | SC16-90-S | 63 | 16 | 26 | 90 | 30 | SD16-S | 1.1 |
| | SC16-120-S | 63 | 16 | 26 | 120 | 30 | SD16-S | 1.1 |
| | SC22-90-S | 63 | 22 | 34 | 90 | 30 | SD22-S | 1.5 |
| | SC22-135-S | 63 | 22 | 34 | 135 | 30 | SD22-S | 1.8 |
| | SC27-90-S | 63 | 27 | 40 | 90 | 30 | SD27-S | 1.8 |
| | SC27-135-S | 63 | 27 | 40 | 135 | 30 | SD27-S | 2.3 |
| | SC32-90-S | 63 | 32 | 46 | 90 | 30 | SD32-S | 2.3 |
| | SC32-135-S | 63 | 32 | 46 | 135 | 30 | SD32-S | 2.9 |
| | HSK100A- | SC13-75-S | 100 | 13 | 20 | 75 | 30 | SD13-S |
| SC16-90-S | | 100 | 16 | 26 | 90 | 30 | SD16-S | 2.3 |
| SC16-120-S | | 100 | 16 | 26 | 120 | 30 | SD16-S | 2.6 |
| SC22-90-S | | 100 | 22 | 34 | 90 | 30 | SD22-S | 2.9 |
| SC22-135-S | | 100 | 22 | 34 | 135 | 30 | SD22-S | 3.2 |
| SC27-90-S | | 100 | 27 | 40 | 90 | 30 | SD27-S | 3.1 |
| SC27-135-S | | 100 | 27 | 40 | 135 | 30 | SD27-S | 3.6 |
| SC32-90-S | | 100 | 32 | 46 | 90 | 30 | SD32-S | 3.6 |
| SC32-135-S | | 100 | 32 | 46 | 135 | 30 | SD32-S | 4.2 |
| SC40-90-S | | 100 | 40 | 55 | 90 | 30 | SD40-S | 4.4 |
| SC40-135-S | 100 | 40 | 55 | 135 | 30 | SD40-S | 5.2 | |

一体式微补偿攻牙刀柄
Tapping Chuck

V



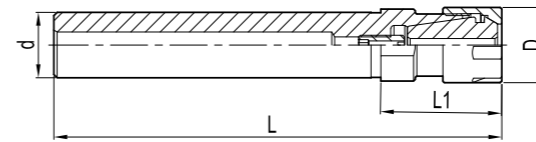
| 订货号 Ordering Code | 适用丝锥 Apply Taps | 尺寸 Dimension (mm) | | | | | | 螺帽 Nuts | 筒夹Collets |
|----------------------|-----------------------|----------------------|------|----|-----|-----|-----|--------------|-----------|
| | | Dh | dm | D | L | F1 | F2 | | |
| HSK63A-V20-100-S | M4~M12 (No.8~7/16) | 63 | 3~10 | 34 | 100 | 0.5 | 0.5 | ER20-A-S | ER20 |
| HSK100A-V20-110-S | | 100 | 3~10 | 34 | 110 | 0.5 | 0.5 | ER20-A-S | ER20 |
| HSK63A-V32-120-S | M4~M20 (No.8~3/4) | 63 | 3~16 | 50 | 120 | 0.5 | 0.5 | ER32-UM/RD-S | ER32 |
| HSK100A-V32-130-S | | 100 | 3~16 | 50 | 130 | 0.5 | 0.5 | ER32-UM/RD-S | ER32 |

注：筒夹和扳手需单独订购
Notice: Collets and wrenches shall be ordered separately.

TOOLING SYSTEM



ER弹性筒夹延长杆
ER Collet Chucks Extensions

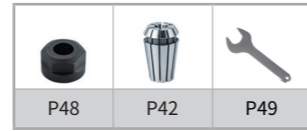
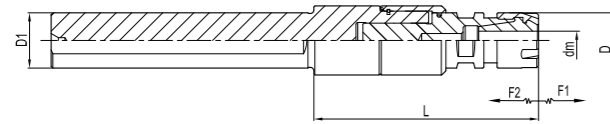


| 订货号 Ordering Code | 尺寸 Dimension (mm) | | | | 螺帽 Nuts | 筒夹 Collets | 重量 Weight(kg) | |
|----------------------|----------------------|----|----|----|------------|---------------|------------------|------|
| | D | d | L1 | L | | | | |
| C12- | ER11M-100-S | 16 | 12 | 25 | 125 | ER11-M-S | ER11 | 0.12 |
| | ER11M-150-S | 16 | 12 | 25 | 175 | ER11-M-S | ER11 | 0.14 |
| C16- | ER11M-100-S | 16 | 16 | 25 | 125 | ER11-M-S | ER11 | 0.14 |
| | ER11M-150-S | 16 | 16 | 25 | 175 | ER11-M-S | ER11 | 0.22 |
| | ER16M-100-S | 22 | 16 | 36 | 136 | ER16-M-S | ER16 | 0.15 |
| C20- | ER16M-150-S | 22 | 16 | 36 | 186 | ER16-M-S | ER16 | 0.21 |
| | ER16M-100-S | 22 | 20 | 36 | 136 | ER16-M-S | ER16 | 0.24 |
| | ER16M-150-S | 22 | 20 | 36 | 186 | ER16-M-S | ER16 | 0.33 |
| | ER20M-100-S | 28 | 20 | 42 | 142 | ER20-M-S | ER20 | 0.23 |
| | ER20M-150-S | 28 | 20 | 42 | 192 | ER20-M-S | ER20 | 0.32 |
| C25- | ER20M-200-S | 28 | 20 | 42 | 242 | ER20-M-S | ER20 | 0.53 |
| | ER25M-100-S | 35 | 20 | 50 | 150 | ER25-M-S | ER25 | 0.55 |
| | ER20M-150-S | 28 | 25 | 42 | 192 | ER20-M-S | ER20 | 0.50 |

注：筒夹和扳手需单独订购
Notice: Collets and wrenches shall be ordered separately.

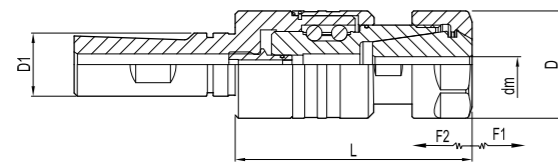
C 配件
ACCESSORIES

一体式攻牙刀柄延长杆
Tapping Chuck Extensions



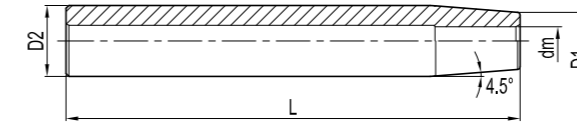
| 订货号 Ordering Code | 适用丝锥 Apply Taps | 尺寸 Dimension (mm) | | | | | | 螺帽 Nuts | 筒夹 Collets | 重量 Weight(kg) |
|----------------------|--------------------|----------------------|---------|----|----|-----|-----|------------|---------------|------------------|
| | | D | dm | D1 | L | F1 | F2 | | | |
| C16-V11-65-S | M1-M7 | 16 | 2.5-7.0 | 16 | 65 | 0.2 | 0.2 | ER11-M-S | ER11 | 0.22 |

一体式攻牙刀柄延长杆
Tapping Chuck Extensions



| 订货号 Ordering Code | 适用丝锥 Apply Taps | 尺寸 Dimension (mm) | | | | | | 螺帽 Nuts | 筒夹 Collets | 重量 Weight(kg) |
|----------------------|-----------------------|----------------------|------|----|-----|-----|-----|--------------|---------------|------------------|
| | | D | dm | D1 | L | F1 | F2 | | | |
| C20-V20-85-S | M4-M12 (No.8~7/16) | 34 | 3~10 | 20 | 85 | 0.5 | 0.5 | ER20-A-S | ER20 | 0.35 |
| C25-V20-85-S | | 34 | 3~10 | 25 | 85 | 0.5 | 0.5 | ER20-A-S | ER20 | 0.45 |
| C25-V32-110-S | M4-M20 (No.8~3/4) | 50 | 3~10 | 25 | 110 | 0.5 | 0.5 | ER32-UM/RD-S | ER32 | 0.6 |

热装刀柄延长杆
Shrink Fit Extensions

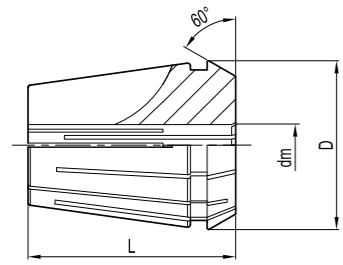


柄径公差
h6



| 订货号 Ordering Code | 尺寸 Dimension (mm) | dm | D1 | D2 | L | 重量 Weight(kg) |
|----------------------|----------------------|----|----|----|-----|------------------|
| | | | | | | |
| C12- | SF3-160-S | 3 | 8 | 12 | 160 | 0.2 |
| | SF4-160-S | 4 | 8 | 12 | 160 | 0.21 |
| C16- | SF3-160-S | 3 | 10 | 16 | 160 | 0.22 |
| | SF4-160-S | 4 | 10 | 16 | 160 | 0.23 |
| | SF5-160-S | 5 | 10 | 16 | 160 | 0.24 |
| | SF6-160-S | 6 | 10 | 16 | 160 | 0.25 |
| C20- | SF5-160-S | 5 | 14 | 20 | 160 | 0.4 |
| | SF6-160-S | 6 | 14 | 20 | 160 | 0.42 |
| C25- | SF8-160-S | 8 | 14 | 20 | 160 | 0.44 |
| | SF8-160-S | 8 | 20 | 25 | 160 | 0.6 |
| C25- | SF10-160-S | 10 | 20 | 25 | 160 | 0.62 |
| | SF12-160-S | 12 | 20 | 25 | 160 | 0.65 |
| C32- | SF10-160-S | 10 | 27 | 32 | 160 | 0.78 |
| | SF12-160-S | 12 | 27 | 32 | 160 | 0.81 |
| | SF16-160-S | 16 | 27 | 32 | 160 | 0.83 |
| | SF20-160-S | 20 | 27 | 32 | 160 | 0.85 |

ER弹性筒夹
ER Collet



| 订货号 Ordering Code | 尺寸 Dimension (mm) | | 重量 Weight(kg) | |
|----------------------|----------------------|-------|------------------|------|
| | D | L | | |
| ER | 11 | 11.50 | 18 | 0.01 |
| | 16 | 17.00 | 27.5 | 0.03 |
| | 20 | 21.00 | 31.5 | 0.04 |
| | 25 | 26 | 34 | 0.06 |
| | 32 | 33 | 40 | 0.10 |
| | 40 | 41 | 46 | 0.25 |

特点
Feature

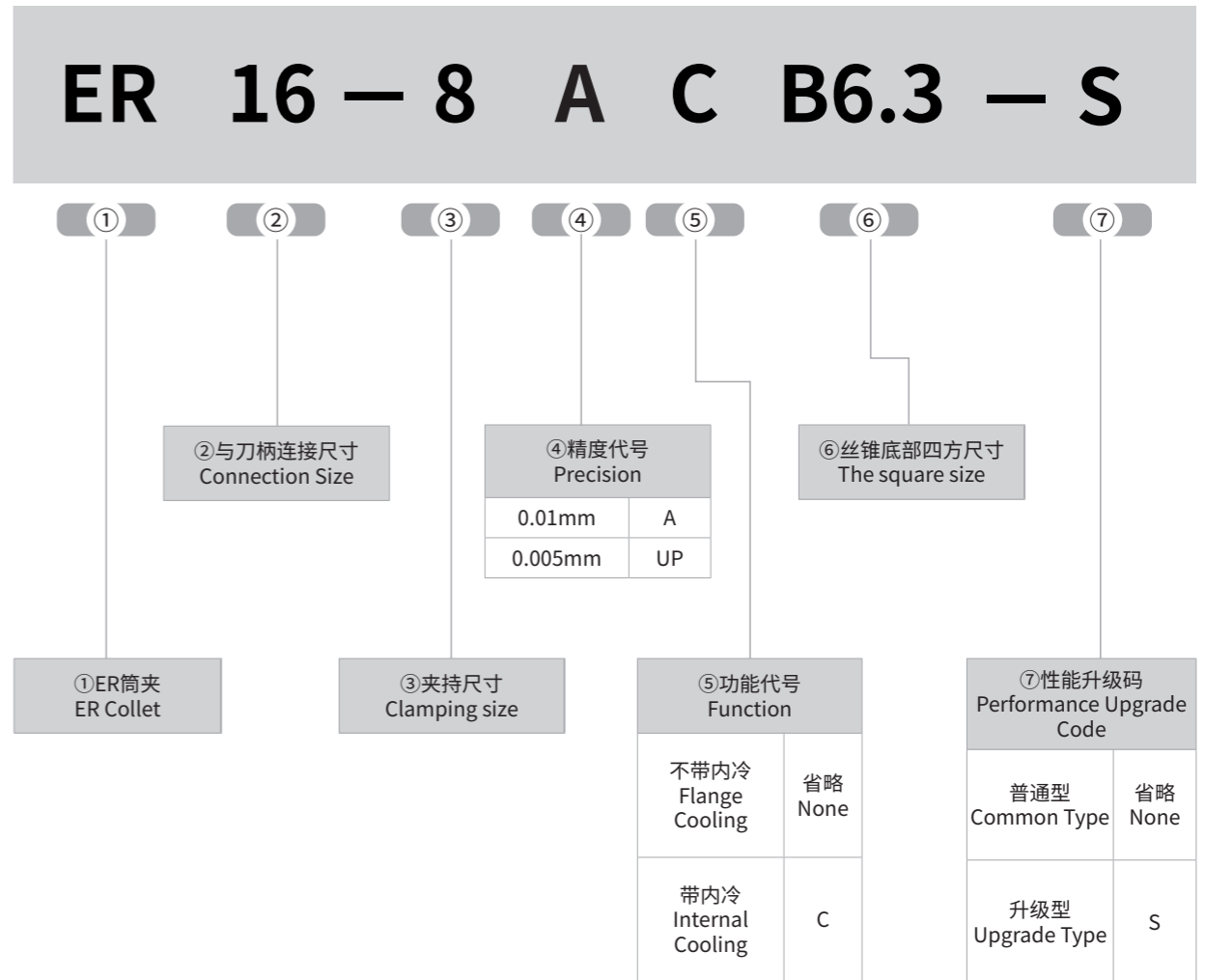
| 型号 Model | 夹持范围 Chucking range |
|------------------|------------------------|
| ER11 | 0.5mm |
| ER16/20/25/32/40 | 1mm |

使用说明
Spring Collet Precision

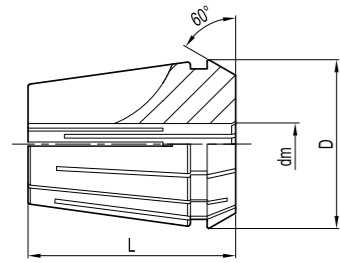
| 型号 Grade | 范围 Range(mm) |
|-------------|-----------------|
| A级 | ≤0.01 mm |
| UP级 | ≤0.005 mm |

注：另有止水内冷型ER筒夹可选配。例：ER16-5C
Note: ER Collet with internal cooling is available. Example: ER16-5C

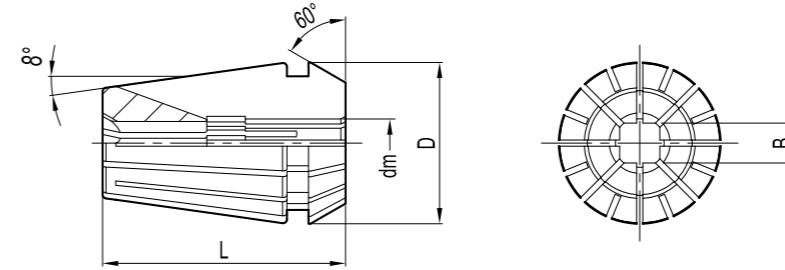
ER筒夹命名规则
Naming rule



ER弹性筒夹
ER Collet



ER攻丝筒夹
ER Tapping Collet



| ER11-13PCS | | |
|----------------------|-----------------|---------|
| 订货号 Ordering Code | 范围 Range(mm) | |
| ER11- | 1A-S | 1.0-0.5 |
| | 1.5A-S | 1.5-1.0 |
| | 2A-S | 2.0-1.5 |
| | 2.5A-S | 2.5-2.0 |
| | 3A-S | 3.0-2.5 |
| | 3.5A-S | 3.5-3.0 |
| | 4A-S | 4.0-3.5 |
| | 4.5A-S | 4.5-4.0 |
| | 5A-S | 5.0-4.5 |
| | 5.5A-S | 5.5-5.0 |
| | 6A-S | 6.0-5.5 |
| 6.5A-S | 6.5-7.0 | |
| 7A-S | 7.0-6.5 | |

| ER16-10PCS | | |
|----------------------|-----------------|---------|
| 订货号 Ordering Code | 范围 Range(mm) | |
| ER16- | 1A-S | 1.0-0.5 |
| | 2A-S | 2.0-1.0 |
| | 3A-S | 3.0-2.0 |
| | 4A-S | 4.0-3.0 |
| | 5A-S | 5.0-4.0 |
| | 6A-S | 6.0-5.0 |
| | 7A-S | 7.0-6.0 |
| | 8A-S | 8.0-7.0 |
| | 9A-S | 9.0-8.0 |
| | 10A-S | 10-9.0 |

| ER20-12PCS | | |
|----------------------|-----------------|---------|
| 订货号 Ordering Code | 范围 Range(mm) | |
| ER20- | 2A-S | 2.0-1.0 |
| | 3A-S | 3.0-2.0 |
| | 4A-S | 4.0-3.0 |
| | 5A-S | 5.0-4.0 |
| | 6A-S | 6.0-5.0 |
| | 7A-S | 7.0-6.0 |
| | 8A-S | 8.0-7.0 |
| | 9A-S | 9.0-8.0 |
| | 10A-S | 10-9.0 |
| | 11A-S | 11-10 |
| | 12A-S | 12-11 |
| | 13A-S | 13-12 |

| ER25-15PCS | | |
|----------------------|-----------------|---------|
| 订货号 Ordering Code | 范围 Range(mm) | |
| ER25- | 2A-S | 2.0-1.0 |
| | 3A-S | 3.0-2.0 |
| | 4A-S | 4.0-3.0 |
| | 5A-S | 5.0-4.0 |
| | 6A-S | 6.0-5.0 |
| | 7A-S | 7.0-6.0 |
| | 8A-S | 8.0-7.0 |
| | 9A-S | 9.0-8.0 |
| | 10A-S | 10-9.0 |
| | 11A-S | 11-10 |
| | 12A-S | 12-11 |
| | 13A-S | 13-12 |
| | 14A-S | 14-13 |
| | 15A-S | 15-14 |
| | 16A-S | 16-15 |

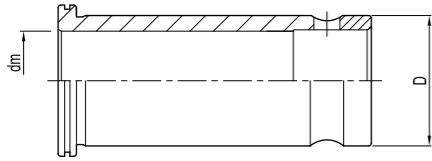
| ER32-19PCS | | |
|----------------------|-----------------|---------|
| 订货号 Ordering Code | 范围 Range(mm) | |
| ER32- | 2A-S | 2.0-1.0 |
| | 3A-S | 3.0-2.0 |
| | 4A-S | 4.0-3.0 |
| | 5A-S | 5.0-4.0 |
| | 6A-S | 6.0-5.0 |
| | 7A-S | 7.0-6.0 |
| | 8A-S | 8.0-7.0 |
| | 9A-S | 9.0-8.0 |
| | 10A-S | 10-9.0 |
| | 11A-S | 11-10 |
| | 12A-S | 12-11 |
| | 13A-S | 13-12 |
| | 14A-S | 14-13 |
| | 15A-S | 15-14 |
| | 16A-S | 16-15 |
| | 17A-S | 17-16 |
| | 18A-S | 18-17 |
| | 19A-S | 19-18 |
| | 20A-S | 20-19 |

| ER40-24PCS | | |
|----------------------|-----------------|---------|
| 订货号 Ordering Code | 范围 Range(mm) | |
| ER40- | 3A-S | 3.0-2.0 |
| | 4A-S | 4.0-3.0 |
| | 5A-S | 5.0-4.0 |
| | 6A-S | 6.0-5.0 |
| | 7A-S | 7.0-6.0 |
| | 8A-S | 8.0-7.0 |
| | 9A-S | 9.0-8.0 |
| | 10A-S | 10-9.0 |
| | 11A-S | 11-10 |
| | 12A-S | 12-11 |
| | 13A-S | 13-12 |
| | 14A-S | 14-13 |
| | 15A-S | 15-14 |
| | 16A-S | 16-15 |
| | 17A-S | 17-16 |
| | 18A-S | 18-17 |
| | 19A-S | 19-18 |
| | 20A-S | 20-19 |
| | 21A-S | 21-20 |
| | 22A-S | 22-21 |
| | 23A-S | 23-22 |
| | 24A-S | 24-23 |
| | 25A-S | 25-24 |
| | 26A-S | 26-25 |

| 订货号 Ordering Code | 尺寸 Dimension (mm) | | 丝锥标准Taps | | | | | | | | | |
|----------------------|----------------------|-------|-----------|------------|-----------|--------|--------|-----|----------|---------|-----|-----|
| | dm | B | ISO529(1) | ISO529(2) | JIS | DIN371 | DIN376 | | | | | |
| ER16- | | | | 2.24B1.8-S | 2.24 | 1.8 | - | M3 | - | - | - | |
| ER16- | | | | 2.8B2.1-S | 2.8 | 2.1 | - | - | - | - | M4 | |
| ER16- | | | | 3.15B2.5-S | 3.15 | 2.5 | M3 | M4 | - | - | - | |
| ER16- | | | | 3.5B2.7-S | 3.5 | 2.7 | - | - | - | M3 | M5 | |
| ER16- | ER20- | | | 4B3.2-S | 4 | 3.2 | M4 | M5 | M3 | - | - | |
| ER16- | ER20- | ER25- | | 4.5B3.55-S | 4.5 | 3.55 | - | M6 | - | - | - | |
| ER16- | ER20- | ER25- | | 5B4-S | 5 | 4 | M5 | - | M4 | - | - | |
| ER16- | ER20- | ER25- | | 5.5B4.5-S | 5.5 | 4.5 | - | - | M5、W3/16 | - | - | |
| ER16- | ER20- | ER25- | | 6B4.5-S | 6 | 4.5 | - | - | M6、W1/4 | - | - | |
| ER16- | ER20- | ER25- | | 6.2B5-S | 6.2 | 5 | - | - | M8 | - | - | |
| ER16- | ER20- | ER25- | ER32- | 6.3B5-S | 6.3 | 5 | M6 | M8 | - | - | - | |
| ER16- | ER20- | ER25- | ER32- | 7B5.5-S | 7 | 5.5 | - | - | M10、W3/8 | - | M10 | |
| ER16- | ER20- | ER25- | ER32- | 8B6.3-S | 8 | 6.3 | M8 | M10 | - | - | - | |
| ER16- | ER20- | ER25- | ER32- | 8.5B6.5-S | 8.5 | 6.5 | - | - | M12 | - | - | |
| ER16- | ER20- | ER25- | ER32- | 9B7.1-S | 9 | 7.1 | - | M12 | - | - | M12 | |
| ER16- | ER20- | ER25- | ER32- | ER40- | 10B8-S | 10 | 8 | M10 | - | - | M10 | - |
| | ER20- | ER25- | ER32- | ER40- | 10.5B8-S | 10.5 | 8 | - | - | M14 | - | - |
| | ER20- | ER25- | ER32- | ER40- | 11.2B9-S | 11.2 | 9 | - | M14 | - | - | - |
| | ER20- | ER25- | ER32- | ER40- | 12.5B10-S | 12.5 | 10 | - | M16 | M16 | - | - |
| | | ER25- | ER32- | ER40- | 14B11.2-S | 14 | 11.2 | - | M18、M20- | M18 | - | - |
| | | ER25- | ER32- | ER40- | 15B12-S | 15 | 12 | - | - | M20- | - | - |
| | | | ER32- | ER40- | 16B12.5-S | 16 | 12.5 | - | M22 | - | - | - |
| | | | ER32- | ER40- | 17B13-S | 17 | 13 | - | - | M22 | - | - |
| | | | ER32- | ER40- | 18B14-S | 18 | 14 | - | M24 | - | - | - |
| | | | ER32- | ER40- | 19B15-S | 19 | 15 | - | - | M24 | - | - |
| | | | | ER40- | 20B15-S | 20 | 15 | - | - | M27 | - | - |
| | | | | ER40- | 20B16-S | 20 | 16 | - | M27、M30 | - | - | M27 |
| | | | | ER40- | 22B18-S | 22 | 18 | - | - | - | - | M30 |
| | | | | ER40- | 22B19-S | 22 | 19 | - | - | M32、M33 | - | - |
| | | | | ER40- | 22.4B18-S | 22.4 | 18 | - | M33 | - | - | - |
| | | | | ER40- | 23B17-S | 23 | 17 | - | - | M30 | - | - |
| | | | | ER40- | 25B19-S | 25 | 19 | - | - | M33 | - | - |

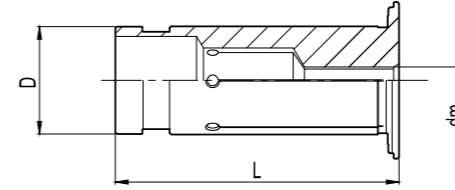
注：1.安装丝锥时柄方必须伸入筒夹方槽内部。 2.选型前需确认丝锥柄径与四方尺寸。
1. The handle of the tap must be inserted into the square slot.
2. Please confirm the diameter of the taper shank and the size of the square before choosing the type.

GC强力弹性直筒夹
GC Straight Collet



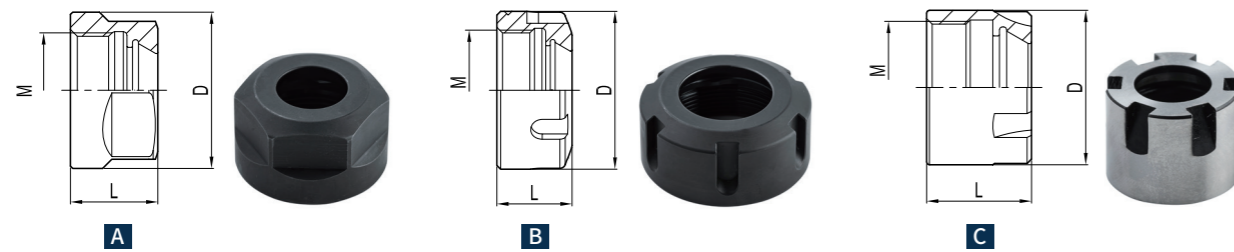
| 订货号 Ordering Code | | 尺寸 Dimension (mm) | | 特殊规格 (d) |
|----------------------|-------|----------------------|----|-------------|
| | | D | dm | |
| GC20- | 6A-S | 20 | 6 | - |
| | 8A-S | 20 | 8 | - |
| | 10A-S | 20 | 10 | - |
| | 12A-S | 20 | 12 | - |
| | 16A-S | 20 | 16 | 15 |
| GC25 | 6A-S | 25 | 6 | - |
| | 8A-S | 25 | 8 | - |
| | 10A-S | 25 | 10 | - |
| | 12A-S | 25 | 12 | - |
| | 16A-S | 25 | 16 | - |
| | 20A-S | 25 | 20 | - |
| GC32- | 6A-S | 32 | 6 | - |
| | 8A-S | 32 | 8 | - |
| | 10A-S | 32 | 10 | - |
| | 12A-S | 32 | 12 | - |
| | 16A-S | 32 | 16 | 15 |
| | 20A-S | 32 | 20 | 19 |
| GC42- | 25A-S | 32 | 25 | 24 |
| | 6A-S | 42 | 6 | - |
| | 8A-S | 42 | 8 | - |
| | 10A-S | 42 | 10 | - |
| | 12A-S | 42 | 12 | - |
| | 16A-S | 42 | 16 | 15 |
| | 20A-S | 42 | 20 | 19 |
| | 25A-S | 42 | 25 | 24 |
| 32A-S | 42 | 32 | 31 | |

OD型中心出水液压刀柄转换筒夹
Hydraulic Collet - Internal Cooling



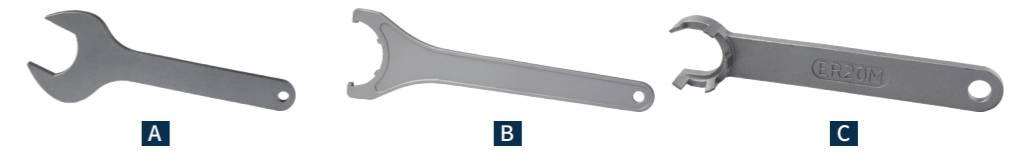
| 订货号 Ordering Code | | 尺寸 Dimension (mm) | | |
|----------------------|------|----------------------|----|------|
| | | dm | D | L |
| ODHC12- | 3-S | 3 | 12 | 45 |
| | 4-S | 4 | 12 | 45 |
| | 5-S | 5 | 12 | 45 |
| | 6-S | 6 | 12 | 45 |
| | 8-S | 8 | 12 | 45 |
| | 10-S | 10 | 12 | 45 |
| ODHC20- | 12-S | 12 | 20 | 50.5 |
| | 14-S | 14 | 20 | 50.5 |
| | 16-S | 16 | 20 | 50.5 |
| | 6-S | 6 | 20 | 50.5 |
| | 8-S | 8 | 20 | 50.5 |
| | 10-S | 10 | 20 | 50.5 |
| | 12-S | 12 | 20 | 50.5 |
| | 14-S | 14 | 20 | 50.5 |
| | 16-S | 16 | 20 | 50.5 |
| | 18-S | 18 | 20 | 50.5 |
| ODHC32- | 20-S | 20 | 32 | 60.5 |
| | 25-S | 25 | 32 | 60.5 |
| | 6-S | 6 | 32 | 60.5 |
| | 8-S | 8 | 32 | 60.5 |
| | 10-S | 10 | 32 | 60.5 |
| | 12-S | 12 | 32 | 60.5 |
| | 14-S | 14 | 32 | 60.5 |
| | 16-S | 16 | 32 | 60.5 |

ER弹性筒夹刀柄螺帽
Clamping Nut For ER Collet Chuck



| 订货号 Ordering Code | 图示 Figure | 尺寸 Dimension (mm) | | | |
|----------------------|--------------|----------------------|----|------|------------|
| | | D | L | M | |
| ER | 16-A-S | A | 28 | 17.5 | M 22XP1.5 |
| | 20-A-S | A | 34 | 19 | M 25XP1.5 |
| | 25-UM/RD-S | B | 42 | 20 | M 32XP1.5 |
| | 32-UM/RD-S | B | 50 | 22.5 | M 40XP1.5 |
| | 40-UM/RD-S | B | 63 | 25.5 | M 50XP1.5 |
| | 11-M-S | C | 16 | 12 | M 13XP0.75 |
| | 16-M-S | C | 23 | 18 | M 19XP1.0 |
| | 20-M-S | C | 28 | 19 | M 24XP1.0 |
| | 25-M-S | C | 35 | 20 | M 30XP1.0 |

ER弹性筒夹刀柄专用扳手
Wrench For ER Tool Holder



| 订货号 Ordering Code | 图示 Figure | 螺帽 Nuts | 重量 Weight(kg) | |
|----------------------|--------------|------------|------------------|-----|
| TER | 16-A-S | A | ER16-A | 0.1 |
| | 20-A-S | A | ER20-A | 0.1 |
| | 25UMKM/RD-S | B | ER25-UM/RD | 0.2 |
| | 32UMKM/RD-S | B | ER32-UM/RD | 0.2 |
| | 40UMKM/RD-S | B | ER40-UM/RD | 0.3 |
| | 11-M-S | C | ER11-M | 0.2 |
| | 16-M-S | C | ER16-M | 0.2 |
| | 20-M-S | C | ER20-M | 0.2 |
| | 25-M-S | C | ER25-M | 0.2 |

GLC强力筒夹刀柄专用扳手
Wrench For Tool Holder GLC



| 订货号 Ordering Code | 适用刀柄 Tool holder (mm) | 重量 Weight(kg) | |
|----------------------|--------------------------|------------------|-----|
| TGLC | 20-S | GLC20 | 0.1 |
| | 32-S | GLC32 | 0.1 |
| | 42-S | GLC42 | 0.2 |

L形扳手
Allen Key



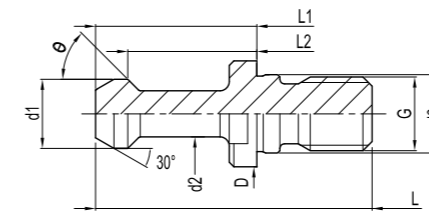
| 订货号 Ordering Code | 尺寸 Dimension (mm) | | |
|----------------------|----------------------|-----|----|
| | d | L | h |
| TH03L-S | 3 | 65 | 20 |
| TH04L-S | 4 | 70 | 25 |
| TH05L-S | 5 | 78 | 28 |
| TH06L-S | 6 | 85 | 32 |
| TH08L-S | 8 | 100 | 36 |
| TH10L-S | 10 | 105 | 40 |
| TH12L-S | 12 | 113 | 44 |
| TH14L-S | 14 | 118 | 48 |
| TH17L-S | 17 | 125 | 55 |

T形扳手
Wrench - T



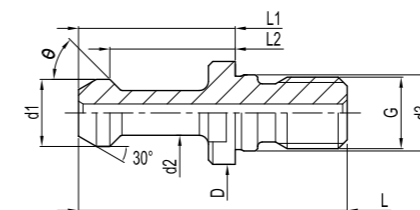
| 订货号 Ordering Code | 尺寸 Dimension (mm) | | |
|----------------------|----------------------|-----|---|
| | d | L | h |
| TH03T-L-S | 3 | 110 | 3 |
| TH04T-L-S | 4 | 120 | 4 |
| TH05T-L-S | 5 | 150 | 5 |
| TH06T-L-S | 6 | 170 | 6 |
| TH08T-L-S | 8 | 190 | 8 |

BT拉钉
BT Pull Stud Without Hole



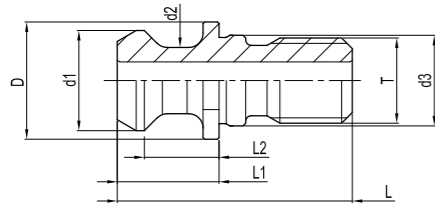
| 订货号 Ordering Code | 尺寸 Dimension (mm) | | | | | | | | | 重量 Weight(kg) | |
|----------------------|----------------------|------|----|----|------|----|----|----|-----|------------------|------|
| | D | d1 | d2 | d3 | L1 | L2 | L | θ | G | | |
| BT30- | 45-S | 16.5 | 11 | 7 | 12.5 | 23 | 18 | 43 | 45° | M12 | 0.03 |
| | 60-S | 16.5 | 11 | 7 | 12.5 | 23 | 18 | 43 | 60° | M12 | 0.03 |
| BT40- | 45-S | 23 | 15 | 10 | 17 | 35 | 28 | 60 | 45° | M16 | 0.07 |
| | 60-S | 23 | 15 | 10 | 17 | 35 | 28 | 60 | 60° | M16 | 0.07 |
| | 90-S | 23 | 15 | 10 | 17 | 35 | 28 | 60 | 90° | M16 | 0.07 |
| BT50- | 45-S | 38 | 23 | 17 | 25 | 45 | 35 | 85 | 45° | M24 | 0.25 |
| | 60-S | 38 | 23 | 17 | 25 | 45 | 35 | 85 | 60° | M24 | 0.25 |
| | 90-S | 38 | 23 | 17 | 25 | 45 | 35 | 85 | 90° | M24 | 0.25 |

BT出水拉钉
BT Pull Stud With Cooling Hole



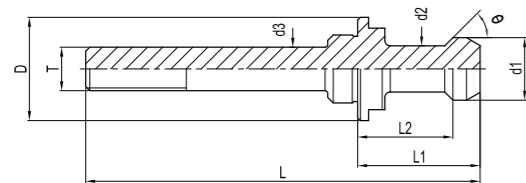
| 订货号 Ordering Code | 出水孔径 Coolant dia. | 尺寸 Dimension (mm) | | | | | | | | | 重量 Weight(kg) | |
|----------------------|----------------------|----------------------|----|----|----|----|----|----|----|-----|------------------|------|
| | | D | d1 | d2 | d3 | L1 | L2 | L | θ | G | | |
| BT40- | 45C-S | 4 | 23 | 15 | 10 | 17 | 35 | 28 | 60 | 45° | M16 | 0.07 |
| | 60C-S | 4 | 23 | 15 | 10 | 17 | 35 | 28 | 60 | 60° | M16 | 0.07 |
| | 90C-S | 4 | 23 | 15 | 10 | 17 | 35 | 28 | 60 | 90° | M16 | 0.07 |
| BT50- | 45C-S | 6 | 38 | 23 | 17 | 25 | 45 | 35 | 85 | 45° | M24 | 0.25 |
| | 60C-S | 6 | 38 | 23 | 17 | 25 | 45 | 35 | 85 | 60° | M24 | 0.25 |
| | 90C-S | 6 | 38 | 23 | 17 | 25 | 45 | 35 | 85 | 90° | M24 | 0.25 |

MAZAK拉钉
MAZAK Pull Stud



| 订货号 Ordering Code | | 尺寸 Dimension (mm) | | | | | | | | 重量 Weight(kg) |
|----------------------|------|----------------------|-------|-------|----|------|------|-------|-----|------------------|
| | | D | d1 | d2 | d3 | L | L1 | L2 | T | |
| MAZAK | 40-S | 22 | 18.8 | 12.45 | 17 | 44.1 | 19.1 | 14 | M16 | 0.02 |
| | 50-S | 37 | 28.96 | 20.83 | 25 | 65.2 | 25.2 | 25.55 | M24 | 0.1 |

MTB拉紧拉钉
MTB Tension Screw


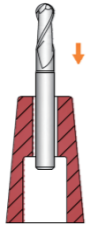
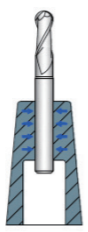
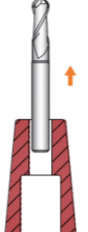


| 订货号 Ordering Code | | 尺寸 Dimension (mm) | | | | | | | | 重量 Weight(kg) | |
|----------------------|----------|----------------------|----|----|----|----|----|-----|----------|------------------|------|
| | | D | d1 | d2 | d3 | L1 | L2 | L | θ | | T |
| BT40- | 45-MT4-S | 23 | 15 | 10 | 17 | 35 | 28 | 110 | 45° | M16 | 0.1 |
| BT50- | 45-MT5-S | 38 | 23 | 17 | 25 | 45 | 35 | 165 | 45° | M20 | 0.65 |



热缩刀柄使用注意事项
Announcements

快速加热原理 / Heating

| 加热 Heating | 置入刀具 Inserting | 固定夹持 Cooling | 取出 Removing |
|---|---|---|---|
|  |  |  |  |
| 将刀具置加热器内加热, Place tool holder in heating | 将刀具置入加热膨胀后的刀柄 Insert the cutter to the expanded holder | 温度冷却收缩后的刀柄, 可稳固 夹持刀具 Cool the holder and hold the cutter | 刀柄在加热膨胀后, 可轻易取出 刀具 Heat the holder and remove the cutter |

使用工具/Tools

- 薄壁及孔径为φ8以下规格的刀柄, 仅适用于硬质合金刀具的装夹。
The holder with thin-walled and hole diameter below 8mm is only suitable for the clamping of cemented carbide tools.
- 使用公差范围外的刀具是刀柄破损和发生滑落事故的原因。
No shrink release is possible for any tool for high speed steel.
- 刀具柄部的细小铁屑等附着物会和阻碍夹持孔正常装夹, 造成刀具无法拔出。
A tools exceeding its tolerance can cause breakage or slippage.

拉钉 (BT) /Retention Knob(BT)

- 请利用出水拉钉, 否则请将拉钉取下后再进行加热。
Use a retention knob that has perforations, or remove the retention knob and heat it.
- 通常拉钉不排出空气就不能放入刀具。
The typical retention knob has no vent to release air, preventing tools from being inserted

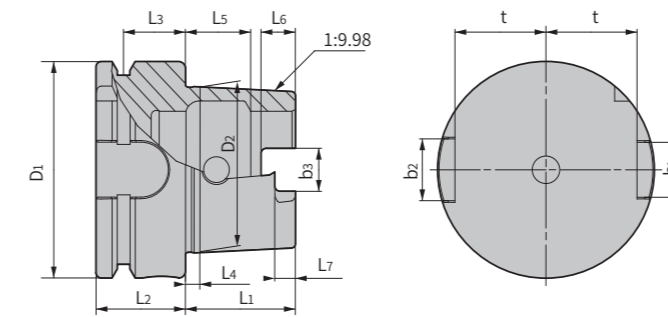
冷却液导管 (HSK) / Coolant Duct(HSK)

- 请带着冷却液导管加热时, 会破坏导管的O型环。
Heating the holder with coolant duct attached, the o-ring will be damaged.
- 加热时, 请卸下冷却液导管。
Remove the coolant duct before heating the holder.

水冷时的注意 Precautions For Water-Cooling

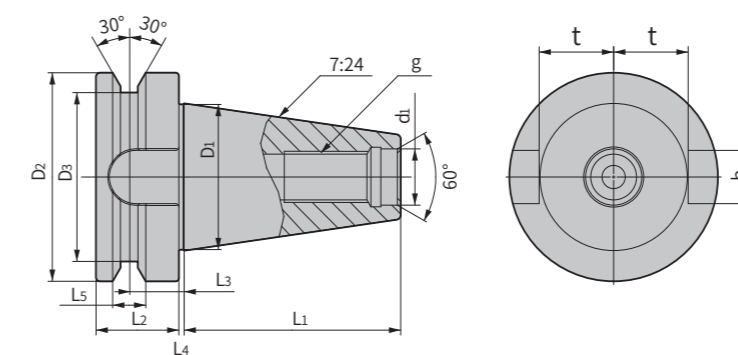
- 热装之后水冷, 产生大量水蒸气, 有烫伤的危险性。
Water-cooling immediately after shrink fitting may result in burns due to the large quantity of steam generated.
- 请在热装装置冷却1分钟以上之后进行水冷。
Be sure to set the shrink-fitting heater setting to cool and cool the holder for at least one minute before water-cooling it.
- 请完全除去水分。残留水分后, 生锈会引起刀柄破损。
Moisture left on the holder may lead to rust formation and damage to the holder, so be sure to completely remove all moisture.

HSK柄尺寸图
HSK Tool Holder Ordering Code - DIN69893



| 订货号 Ordering Code | 尺寸 Dimension | | | | | | | | | | | | |
|----------------------|-----------------|--------|----|----|----|-----|-------|-----|-----|----|----|-------|------|
| | D1 | D2 | L1 | L2 | L3 | L4 | L5 | L6 | L7 | b1 | b2 | b3 | t |
| HSK40A | 40 | 30.007 | 20 | 20 | 16 | 4 | 11.42 | 6 | 3.5 | 11 | 9 | 8.05 | 17 |
| HSK50A | 50 | 38.009 | 25 | 26 | 18 | 5 | 14.13 | 7.5 | 4.5 | 14 | 12 | 10.54 | 21 |
| HSK63A | 63 | 48.01 | 32 | 26 | 18 | 6.3 | 18.13 | 10 | 6 | 18 | 16 | 12.5 | 26.5 |
| HSK100A | 100 | 75.013 | 50 | 29 | 20 | 10 | 28.56 | 15 | 10 | 22 | 20 | 20 | 44 |

BT柄尺寸图
BT Tool Holder Ordering Code - MAS403BT



| 订货号 Ordering Code | 尺寸 Dimension | | | | | | | | | | | |
|----------------------|-----------------|------|-------|-----|----|----|------|----|----|------|------|-----|
| | D1 | d1 | L1 | D2 | D3 | L2 | L3 | L4 | L5 | b | t | g |
| BT30 | 31.75 | 12.5 | 48.4 | 46 | 38 | 20 | 13.6 | 2 | 8 | 16.1 | 16.3 | M12 |
| BT40 | 44.45 | 17 | 65.4 | 63 | 53 | 25 | 16.6 | 2 | 10 | 16.1 | 22.6 | M16 |
| BT50 | 69.85 | 25 | 101.8 | 100 | 85 | 35 | 23.2 | 3 | 15 | 25.7 | 35.4 | M24 |



厦门金鹭特种合金有限公司

XIAMEN GOLDEN EGRET SPECIAL ALLOY CO.,LTD.

地址：中国厦门市湖里区兴隆路69号

Add: No.69 Xinglong Road Huli District Xiamen CHINA

工厂地址：中国厦门同安工业集中区集成路1601-1629号

Factory Add: No.1601-1629 Jicheng Road Industrial
Concentration Area Tongan Xiamen CHINA

Tel: +86-592-7310203

Fax: +86-592-7107322

PC: 361006

Email: GJ.GLB@CXTC.COM

www.gesac-tools.com

 **400-998-6858**



GE202503I